



## 1901

On 25 January, China Light & Power Company Ltd. was incorporated in Hong Kong. Hong Kong's population was 280,000. Maximum demand from China Light's electricity supply system for the year was 1/10 MW.



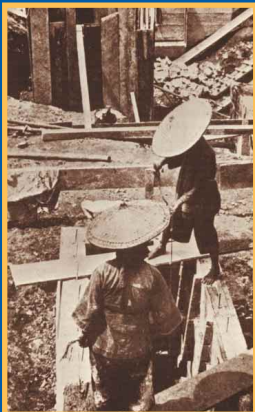
## 1909

Sir Elly Kadoorie, father of Lord Lawrence Kadoorie, acquired a stake in CLP.



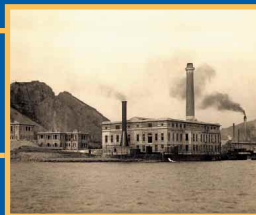
## 1903

First power station commissioned in Chatham Road, Hunghom with 75kW generating capacity.



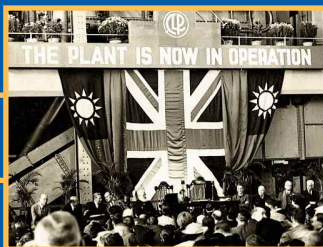
## 1925

Electricity demand grew with population growth. Governor Sir Cecil Clementi accepted CLP's proposal to actively develop a distribution network to lay a solid foundation for the New Territories' subsequent growth.



## 1919

Work on Hok Un Power Station started. CLP started supplying power for street lighting in Kowloon.



## 1940

Hok Un Power Station A was opened by Governor Sir Geoffrey Northcote in February when Hong Kong's population reached 1.6 million. The Argyle Street office was inaugurated.

Hok Un Power Station, however, was severely damaged by the Japanese who invaded Hong Kong the following year. Supply to most areas in Kowloon and the New Territories was disrupted for the duration of the Japanese occupation.

