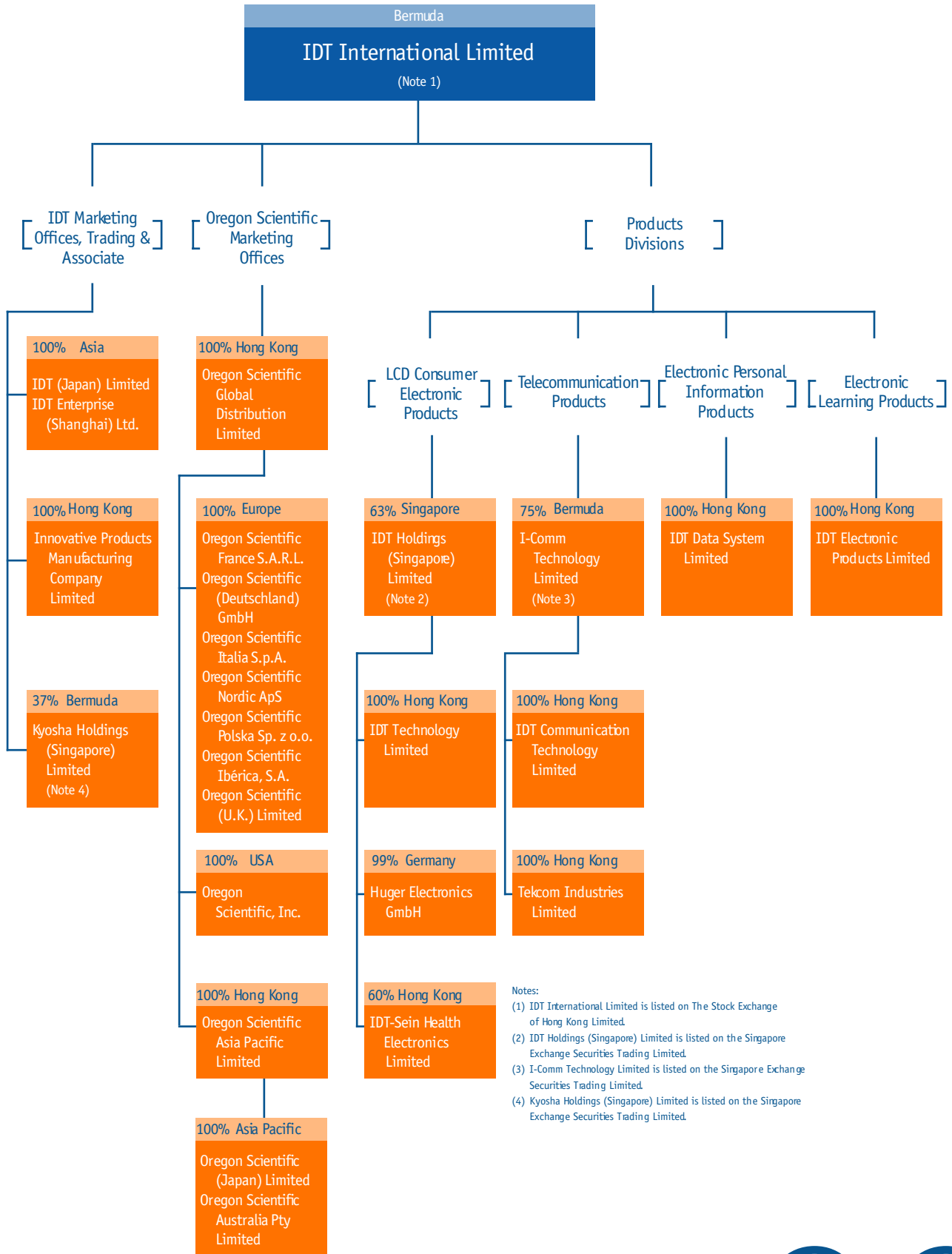


# CORPORATE STRUCTURE



**Notes:**

- (1) IDT International Limited is listed on The Stock Exchange of Hong Kong Limited.
- (2) IDT Holdings (Singapore) Limited is listed on the Singapore Exchange Securities Trading Limited.
- (3) I-Comm Technology Limited is listed on the Singapore Exchange Securities Trading Limited.
- (4) Kyosha Holdings (Singapore) Limited is listed on the Singapore Exchange Securities Trading Limited.