

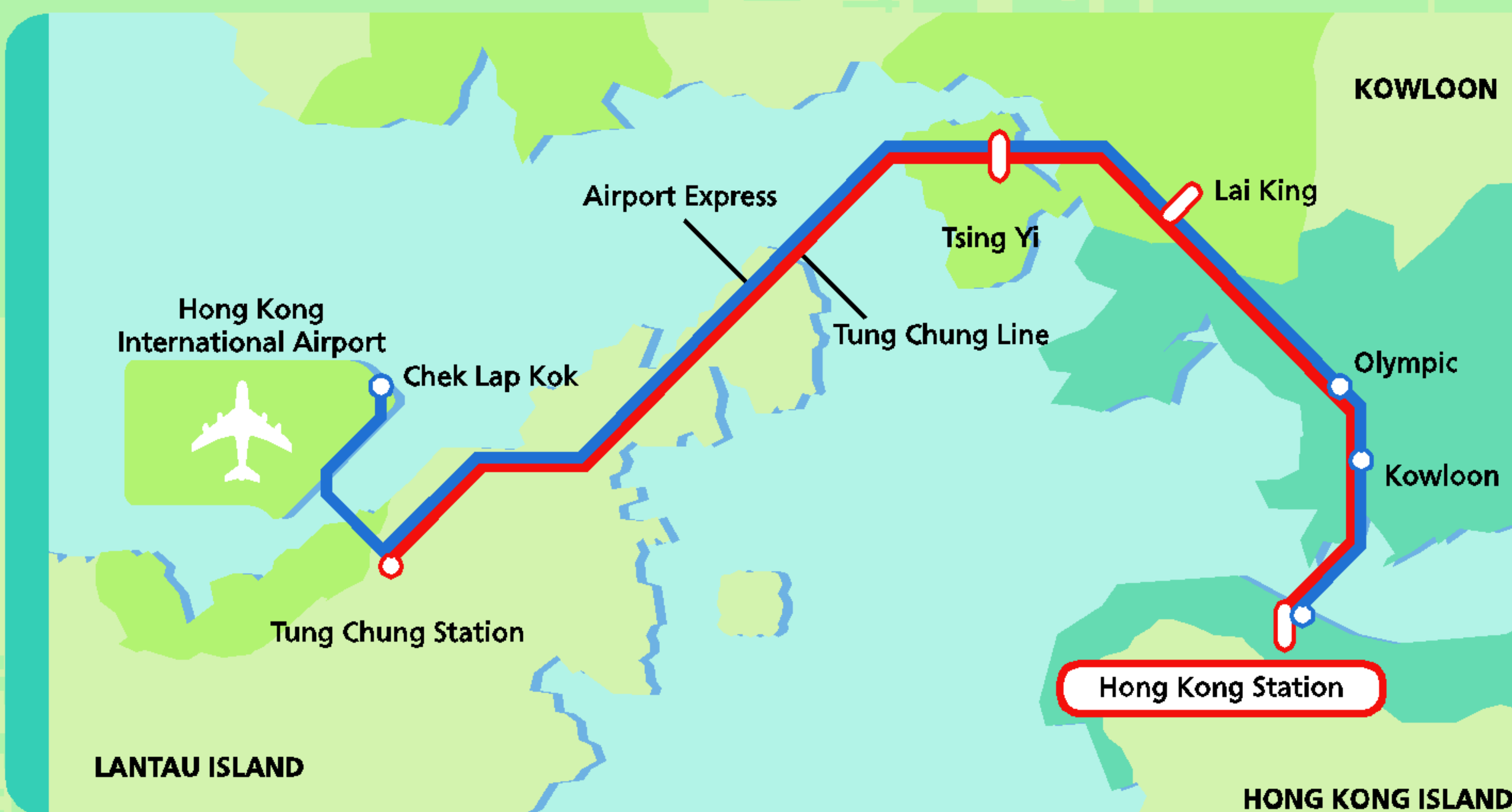
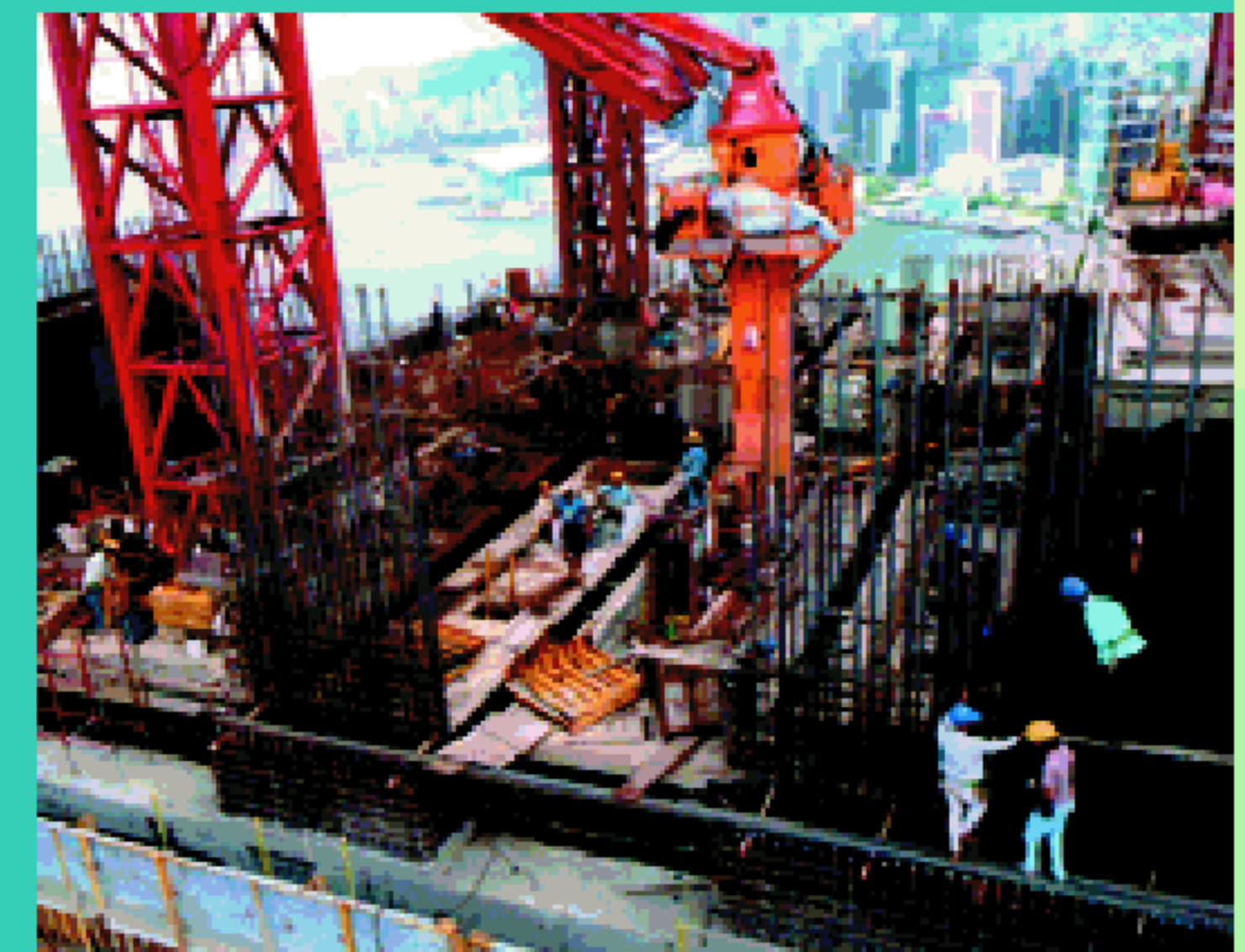
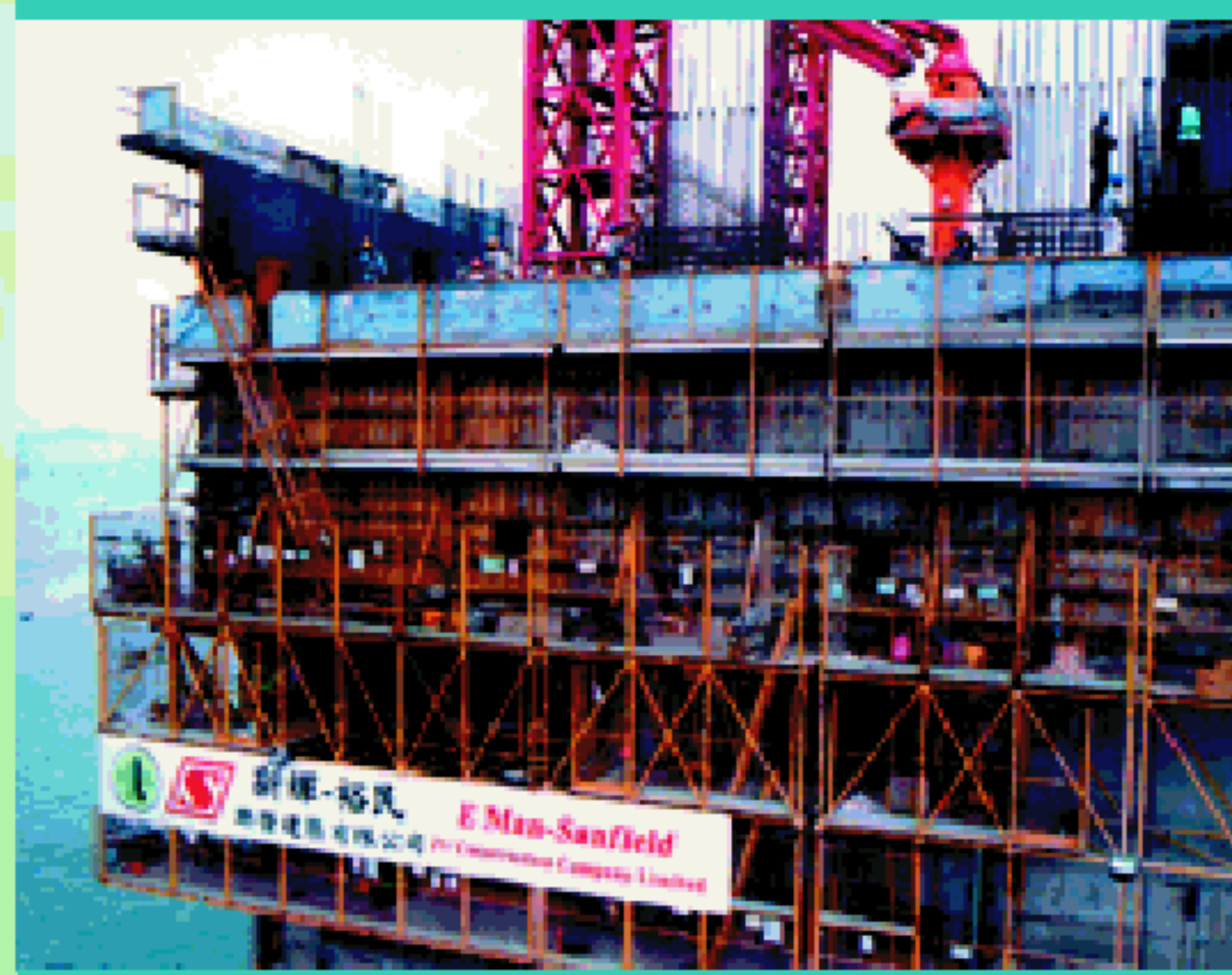
Project Under Development

Airport Railway - Hong Kong Station

International Finance Centre - Phase Two



Under development is this Phase Two of the International Finance Centre project that includes the 88-storey Grade A office tower linking to retail shopping mall (North), and a 30-storey hotel tower together with a 40-storey suite hotel tower. It is scheduled to be fully completed in 2004.



The IFC development project is located above the MTRC-Hong Kong Station at the heart of the Central business district, from which travelling by train to the Hong Kong International Airport or Tung Chung new town only takes approximately 30 minutes.