

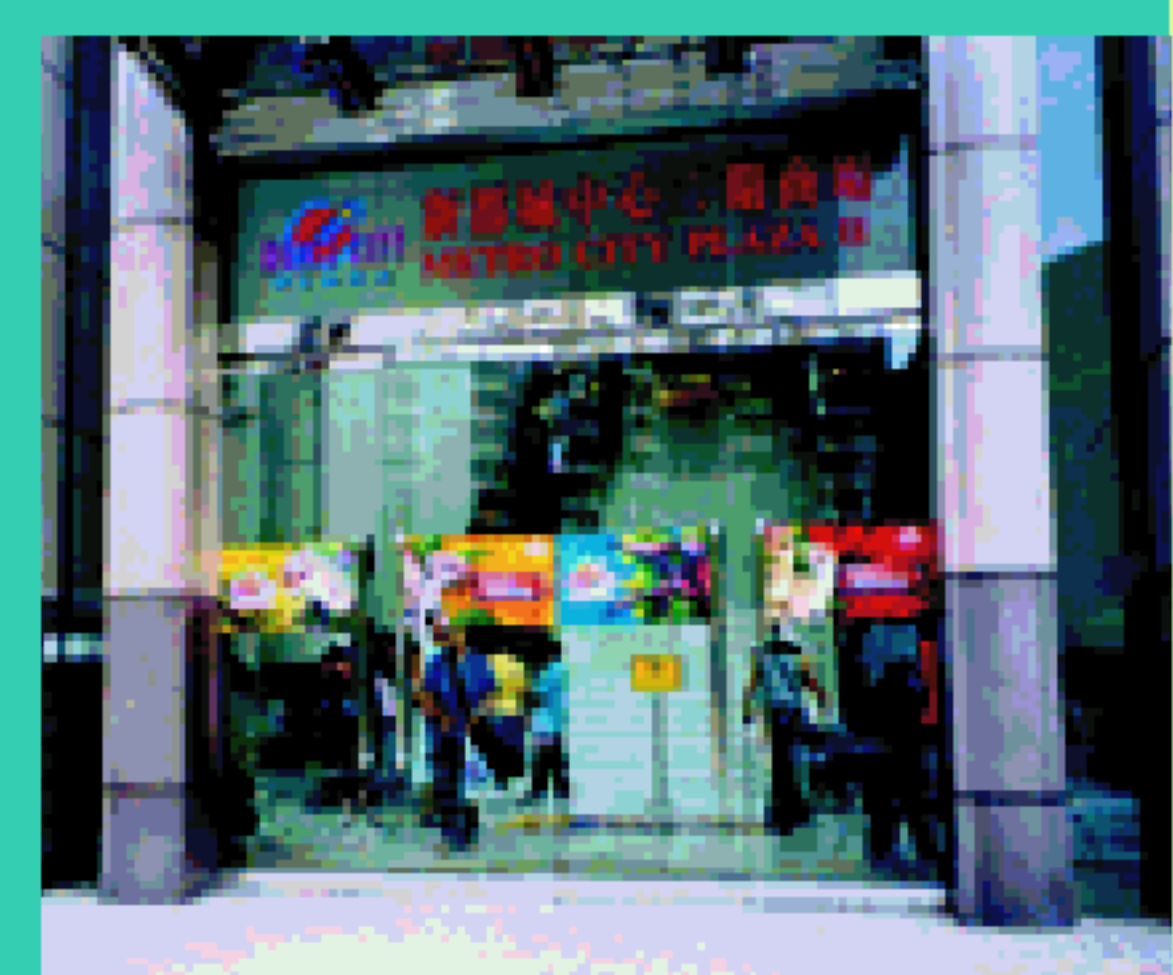
Investment Property Project

Shopping Mall In New Town

Metro City - Phase II & III, Tseung Kwan O



Located in the new township of Tseung Kwan O and built with a total G.F.A. of approx. 1,220,000 sq.ft., this is one of the major rental properties retained in the large-scale residential-cum-commercial property project completed by the Group in 2000. It is envisaged that its future rental performance will benefit further from its close proximity to the future terminal station of the Tseung Kwan O MTR Extension Line – Po Lam Station – that will soon be opened (Lower right photo shows the Po Lam Station under construction.)



Investment Property Project

Shopping Mall In New Town

Sunshine City Plaza, Ma On Shan



Being one of the major investment properties of the Group, this spacious retail shopping arcade situates beneath the large-scale residential-cum-commercial property was completed by the Group in 1996 at the heart of Ma On Shan, N.T.. It is in close proximity to the future Ma On Shan Station of the KCRC Ma On Shan Extension Line. (The photo below shows the Ma On Shan Station under construction).

