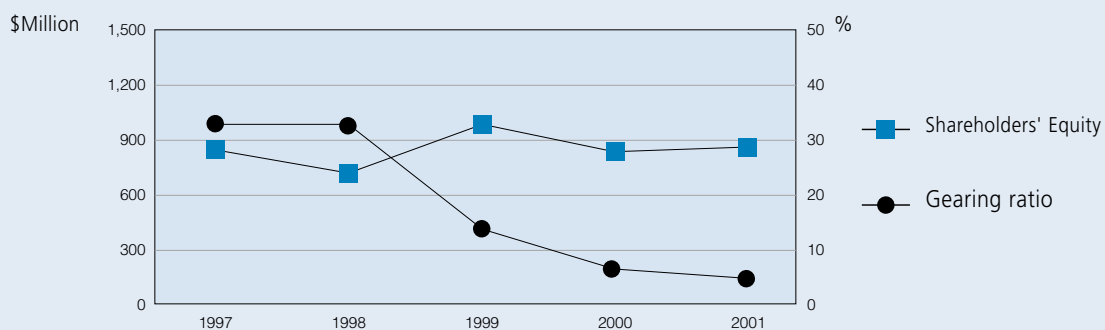


FINANCIAL HIGHLIGHTS

(Expressed in Hong Kong dollars)

	2001	2000
Net assets per share	\$0.72	\$0.76
Gearing ratio	6.03%	7.30%
Current ratio (times)	2.7	2.5
Quick ratio (times)	2.0	1.8
Inventory turnover	87 days	88 days
Debtor turnover	18 days	17 days
Creditor turnover	44 days	58 days

SHAREHOLDERS' EQUITY AND GEARING RATIO



TURNOVER

