

**Consolidated profit and loss data** 綜合損益賬資料

Year ended 31 March 截至三月三十一日止年度

	2002 HK\$'000	2001 HK\$'000	2000 HK\$'000	1999 HK\$'000	1998 HK\$'000
Turnover 營業額	<b>1,530,706</b>	1,513,685	1,415,699	1,482,163	1,742,132
Operating profit before taxation 除稅前經營溢利	<b>51,425</b>	112,755	144,405	169,165	232,692
Taxation 稅項	<b>(3,734)</b>	(9,986)	(13,977)	(17,058)	(38,011)
Profit before minority interests 除少數股東權益前之溢利	<b>47,691</b>	102,769	130,428	152,107	194,681
Minority interests 少數股東權益	<b>5,741</b>	795	(107)	(4,783)	3,829
Net profit attributable to shareholders 股東應佔溢利	<b>53,432</b>	103,564	130,321	147,324	198,510
Dividends 股息	<b>(40,735)</b>	(87,506)	(164,049)	(116,961)	(133,170)
Per share data 每股資料	HK cents	HK cents	HK cents	HK cents	HK cents
Earnings 盈利	<b>4.69</b>	9.67	13.20	14.80	20.00
Interim dividend 中期股息	<b>2.50</b>	4.00	4.00	3.60	6.00
Special interim dividend 特別中期股息	–	–	10.00	–	–
Proposed final dividend 建議末期股息	<b>1.00</b>	1.00	2.30	4.30	4.30
Proposed special final dividend 建議特別末期股息	–	3.00	–	3.90	3.00

**Consolidated balance sheet** 綜合資產負債表

Year ended 31 March 三月三十一日

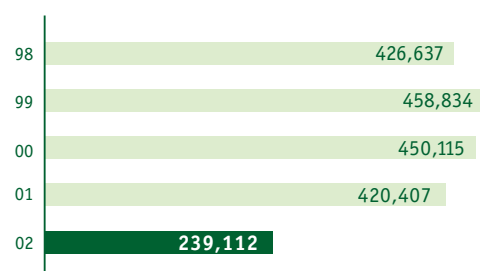
	2002 HK\$'000	2001 HK\$'000 (Restated)	2000 HK\$'000 (Restated)	1999 HK\$'000 (Restated)	1998 HK\$'000 (Restated)
Fixed assets 固定資產	<b>197,544</b>	131,946	140,343	150,379	141,148
Investment properties 投資物業	<b>17,649</b>	17,700	19,110	22,430	27,500
Goodwill 商譽	<b>55,754</b>	–	–	–	–
Cash 現金	<b>239,112</b>	420,407	450,115	458,834	426,637
Other net current assets / (liabilities) 其他流動資產淨值/(負債)	<b>683,376</b>	599,805	509,176	480,672	485,410
Total assets over current liabilities 總資產減流動負債	<b>1,193,435</b>	1,169,858	1,118,744	1,112,315	1,080,695
Long term bank loans 長期銀行貸款	–	–	–	–	–
Minority interests 少數股東權益	<b>(14,873)</b>	(20,614)	(21,409)	(21,302)	(16,231)
Non current liabilities 非流動負債	<b>(2,017)</b>	(719)	(678)	(678)	(848)
Shareholders' funds 股東資金	<b>1,176,545</b>	1,148,525	1,096,657	1,090,335	1,063,616
	%	%	%	%	%
Debt to equity ratio 債務與資本比率	–	–	–	–	–
Return on equity 資金回報率	<b>4.54</b>	9.02	11.88	13.51	18.66
Dividend pay-out ratio 派息率	<b>76.24</b>	82.73	123.48	78.67	66.50
Current ratio 流動比率	<b>4.80</b>	6.43	8.47	9.88	9.80

**Turnover by products**

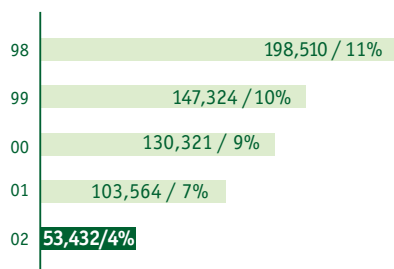
產品之營業額

HK\$'000  
港幣千元**Cash balance**

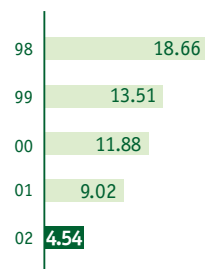
現金結餘

HK\$'000  
港幣千元**Net profit attributable to shareholders / Net profit margin**

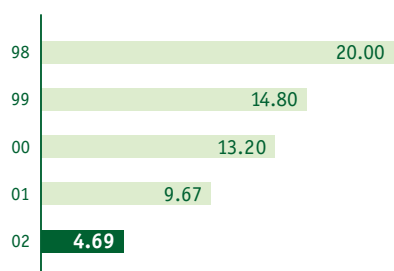
股東應佔純利 / 純利率

HK\$'000 / %  
港幣千元 / 百分比**Return on equity**

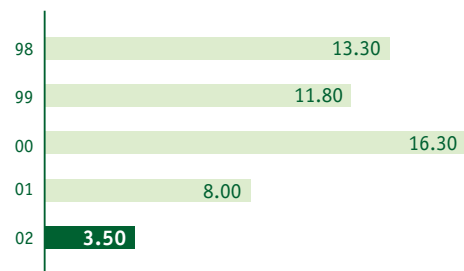
資金回報率

%  
百分比**Earnings per share**

每股盈利

HK¢  
港仙**Dividend per share**

每股股息

HK¢  
港仙**Current ratio**

流動比率

%  
百分比