

Directors, Officers and Advisers

BOARD OF DIRECTORS



Peter Ting Chang LEE J.P. (I)
Chairman and Managing Director

Peter T. C. Lee first joined the Board in 1988, became Managing Director in 1999, and Chairman and Managing Director in 2001. A non-executive director of Cathay Pacific Airways Limited, Hang Seng Bank Limited, SCMP Group Limited, Maersk Hong Kong Limited, and a director of a number of other companies. A vice president of the Real Estate Developers Association of Hong Kong. Also a director of Lee Hysan Estate Company, Limited. Received a Bachelor of Science Degree in Civil Engineering from the University of Manchester, he also qualified as a Solicitor of the Supreme Court of England and Wales. He is aged 49.



Dr. Victor Kwok King FUNG (I)
Independent Non-Executive Director

Chairman of the Li & Fung Group, the Hong Kong Airport Authority and the Hong Kong University Council, a non-executive director of Bank of China (Hong Kong) Limited, Anglogold Limited, PCCW Limited, Kerry Properties Ltd., Orient Overseas (International) Ltd., DBS Kwong On Bank, Ltd., Sun Hung Kai Properties Limited, Dao Heng Bank Group Limited and its three operating subsidiaries, which are authorized institutions. He holds a Bachelor and a Master Degree in Electrical Engineering from the Massachusetts Institute of Technology, a Doctorate in Business Economics from Harvard University. Appointed a Director in 1998 and is aged 57.



Hans Michael JEBSEN (I)
Non-Executive Director

Chairman of Jebsen and Company Limited as well as a director of other Jebsen Group companies worldwide. Appointed a Director in 1994 and is aged 46.



Per JORGENSEN (A)
Independent Non-Executive Director

A director of A.P. Moller, Denmark and a number of A.P. Moller-Maersk companies in Asia, Africa and Europe; also a non-executive Chairman of Lee Gardens International Holdings Limited. Appointed a Director in 1981 and is aged 67.



Sir David AKERS-JONES (A,E)
G.B.M., K.B.E., C.M.G., J.P.
*Independent Non-Executive
Deputy Chairman*

Chairman of Global Asset Management (HK) Limited. Vice chairman of CNT Group Limited and a non-executive director of various other companies. He is also a chairman and member of various voluntary organisations. Received his Master of Arts Degree at Oxford University. He was formerly the Chief Secretary of Hong Kong. Appointed a Director in 1989 and became the Deputy Chairman in 2001. He is aged 75.



Fa-kuang HU (E)
G.B.S., C.B.E., J.P.
Non-Executive Director

Chairman of Ryoden (Holdings) Limited and its subsidiary companies. Also a director of i-CABLE Communications Limited. Holds a Bachelor of Science Degree from Shanghai Jiao Tong University. Appointed a Director in 1979 and is aged 79.



Anthony Hsien Pin LEE (I)
Non-Executive Director

A director and substantial shareholder of the Australian-listed Beyond International Limited, principally engaged in television programme production and international sales of television programmes and feature films. Received a Bachelor of Arts Degree from Princeton University and a Master of Business Administration Degree from The Chinese University of Hong Kong. Also a director of Lee Hysan Estate Company, Limited. Appointed a Director in 1994 and is aged 45.



Chien LEE (A)
Non-Executive Director

A director of Scottish and Eastern Investments Limited, Lee Gardens International Holdings Limited and a number of other companies. Non-executive director of Swire Pacific Limited. Also a director of Lee Hysan Estate Company, Limited. Received a Bachelor of Science Degree in Mathematical Science, a Master of Science Degree in Operations Research and a Master of Business Administration Degree from Stanford University. Appointed a Director in 1988 and is aged 49.



Michael Chi Kung MOY
Chief Financial Officer and Director

Responsible for Group finance. Received a BSE in Aeronautical Engineering from Princeton University, a Master Degree in Aeronautical Engineering from the University of Washington, and MBA with Distinction from The Wharton School of the University of Pennsylvania. Before joining the Company in 1999, he was a management consultant with McKinsey & Company, and head of Asia for an international direct investment firm. He became Chief Financial Officer and Director in 1999 and is aged 46.



Pauline Wah Ling YU WONG
Director, Property

Responsible for the Group's property portfolio. Having obtained a Bachelor of Arts Degree from The University of Hong Kong, she qualified as a Fellow Member of the Chartered Institute of Housing. She joined the Company in 1981 and has over thirty years of experience in the property field. She was appointed a Director in 1991 and is aged 54.



Michael Tze Hau LEE (I)
Chief Operating Officer and Director

Michael T.H. Lee first joined the Board in 1990 and became Chief Operating Officer in 2002. A non-executive director of Tai Ping Carpets International Limited. A member of the Executive Committee of HK Society for Protection of Children and Vice Chairman of Helping Hand. He was formerly Managing Director of an investment management company with extensive experience in equity investments and management in the Asia Pacific region. Also a director of Lee Hysan Estate Company, Limited. Received his Bachelor of Arts Degree from Bowdoin College and a Master of Business Administration Degree from Boston University. He is aged 41.



Dr. Deanna Ruth Tak Yung RUDGARD
Non-Executive Director

Received a Master of Arts Degree, Bachelor of Medicine and of Surgery Degree from Oxford University. Also a director of Lee Hysan Estate Company, Limited. Appointed a Director in 1993 and is aged 63.



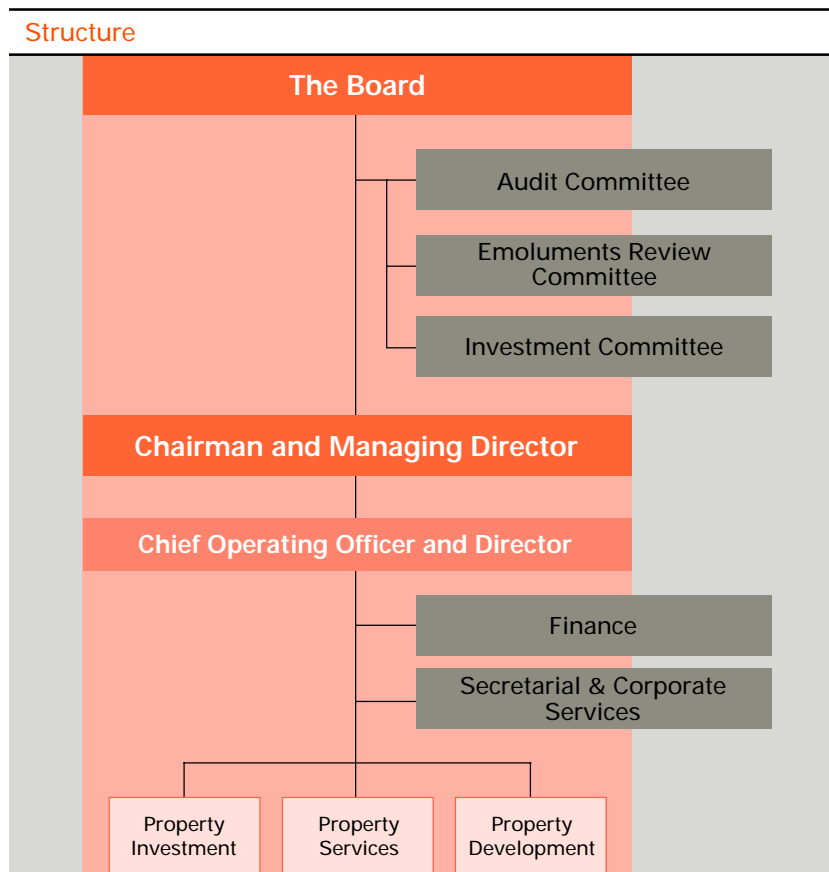
Dr. Geoffrey Meou-tsen YEH (E)
S.B.S., M.B.E., J.P., D.C.S., M.Sc.,
F.C.I.O.B., F.Inst. D.

Independent Non-Executive Director

Former Chairman of Hsin Chong Construction Group Ltd. Holds a Bachelor degree of Science from University of Illinois and a Master degree of Science from Harvard University. Appointed Non-Executive Director in 1979 and became an Independent Non-Executive Director in 2001. He is aged 71.

(A) *Audit Committee*
(E) *Emoluments Review Committee*
(I) *Investment Committee*

Directors, Officers and Advisers



Chairman and Managing Director

Peter Ting Chang LEE J.P. (I)

Independent Non-Executive Deputy Chairman

Sir David AKERS-JONES (Chairing A, E)
G.B.M., K.B.E., C.M.G., J.P.

Independent Non-Executive Directors

Dr. Victor Kwok King FUNG (I)
Per JORGENSEN (A)
Dr. Geoffrey Meou-tsen YEH (E)
S.B.S., M.B.E., J.P., D.C.S., M.Sc.,
F.C.I.O.B., F.Inst.D.

Non-Executive Directors

Fa-kuang HU (E)
G.B.S., C.B.E., J.P.
Hans Michael JEBSEN (I)
Anthony Hsien Pin LEE (I)
Chien LEE (A)
Dr. Deanna Ruth Tak Yung RUDGARD

Executive Directors

Michael Tze Hau LEE (I)
Michael Chi Kung MOY
Pauline Wah Ling YU WONG

Company Secretary

Wendy Wen Yee YUNG

(A) Audit Committee
(E) Emoluments Review Committee
(I) Investment Committee

Front row from right: Peter T.C. Lee, Michael T.H. Lee
Middle row from right: Wendy Wen Yee Yung, Michael Chi Kung Moy,
Pauline Wah Ling Yu Wong, Prof. Alex Chun Wan Lui
Back row from right: Deric Probst Wallace, Ben Sau Shun Lui,
Lora Wing Sze Luke, Mark Sun Wah Chim, Hoi Yee Yau



COMPANY SECRETARY

Wendy Wen Yee YUNG

General Counsel and Company Secretary
Responsible for Group corporate services including legal, secretarial, human resources, corporate communications and office administration. She holds a Master of Arts Degree from Oxford University and is a solicitor of the High Court of the HKSAR. Prior to joining the Group in 1999, she was a partner of an international law firm in Hong Kong. Aged 41.

SENIOR MANAGEMENT

Alex Chun Wan LUI

Senior Advisor, Urban Design and Architectural Services
Responsible for the Group's urban design and architectural services. A Registered Architect and an Authorized Person (Architect). Also a member of the Town Planning Board. He holds a Master Degree in City Planning from the Massachusetts Institute of Technology and a Bachelor of Architecture Degree from the University of Hong Kong. Before joining the Group in 2002, he was Professor in Architecture of the Chinese University of Hong Kong and has practised architecture & urban design for almost thirty years in Hong Kong, Singapore and USA. Aged 59.

Mark Sun Wa CHIM

General Manager, Office Leasing
Responsible for the Group's office leasing activities. He holds a MBA Degree from Heriot-Watt University. Before joining the Group in 1999, he was National Director, Commercial Department, of an international real estate consultancy firm with over fourteen years' experience in leasing. Aged 39.

Ben Sau Shun LUI

General Manager, Project and Technical Services
Responsible for the Group's project and technical services. A Registered Professional Engineer and a Chartered Civil and Structural Engineer, he holds a Master of Science Degree in Construction Project Management and a Bachelor of Science Degree in Civil Engineering, both from the University of Hong Kong. Before joining the Group in 2000, he has served senior project management positions in other major listed companies. Aged 44.

Lora Wing Sze LUKE

General Manager, Retail Leasing
Responsible for the Group's retail leasing activities. Prior to joining the Group in 2000, she was senior leasing manager of a major listed property investment company. She holds a MBA Degree from University of Reading in Real Estate and Construction. Aged 42.

Deric PROBST-WALLACE

General Manager, Property Services
Responsible for the Group's property services. He holds a MBA degree from the Cranfield School of Management, a diploma from the Chartered Institute of Marketing and a Bachelor of Science Degree from the University of Stirling. Before joining the Group in 2002, he was a Director of an international property services and construction-related consulting firm. Aged 40.

Hoi Yee YAU

Head of Corporate Planning
Heads the Group's Corporate Planning Department, Finance Division. She holds a MBA Degree from Harvard University and a Bachelor of Science Degree from Stanford University.

Prior to joining the Group in 2002, she has served senior management positions in investment and consulting companies. Aged 34.

Advisers

Auditors

Deloitte Touche Tohmatsu

Principal Bankers

The Hongkong and Shanghai Banking Corporation Limited
Hang Seng Bank Limited

Share Registrars and Transfer Office

Standard Registrars Limited
G/F., Bank of East Asia Harbour View Centre
56 Gloucester Road, Wanchai
Hong Kong

Registered Office

49/F., Manulife Plaza
The Lee Gardens
33 Hysan Avenue
Hong Kong

Notes

DIRECTORS' REPORT AND ACCOUNTS 2002