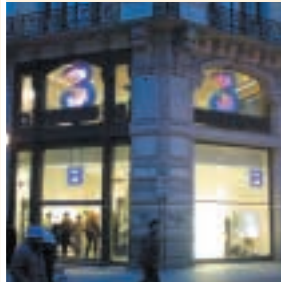


# Cheung Kong Group

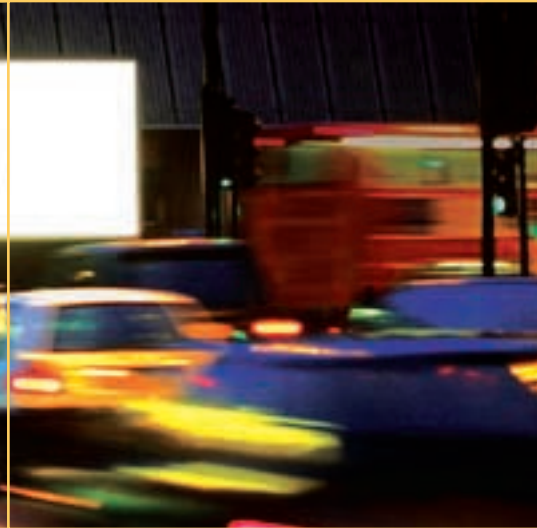


DIVERSIFIED BUSINESSES AROUND





# Hutchison Whampoa Limited





## Hutchison Whampoa Limited

*Hutchison Whampoa has benefited from its geographic diversity, and has gained valuable competitive experience with operations in 41 countries. It is in a strong financial position. All of its existing core businesses will continue to perform well and will provide substantial recurring contributions. The start-up 3G businesses will be able to demonstrate clearly in a year's time their promising prospects and their potential to contribute significantly to the growth of Hutchison Whampoa and create long term value for its shareholders.*



Ports and  
Related Services

Property  
and Hotels

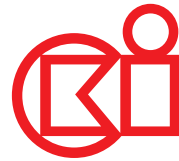
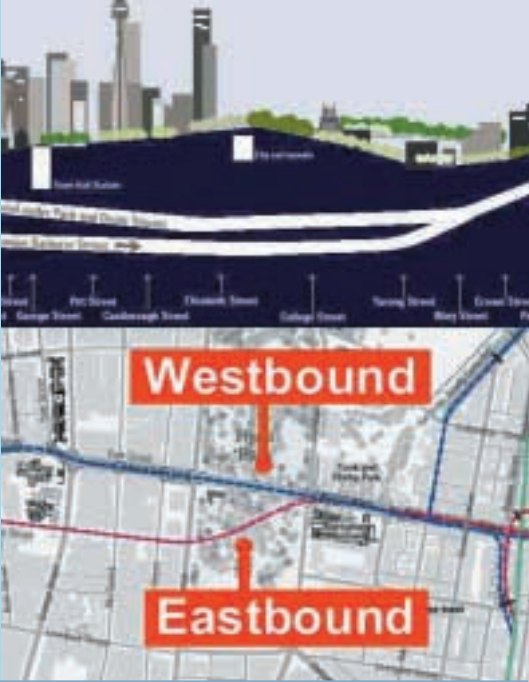
Energy, Infrastructure,  
Finance and  
Investments

Telecommunications

Retail and  
Manufacturing

# Cheung Kong Infrastructure Holdings Limited





## Cheung Kong Infrastructure Holdings Limited

*CKI is one of the few ready, willing and capable infrastructure investors in the world. Leveraging on its strong financial position, solid experience in infrastructure, and sharp business acumen, CKI will continue to study new infrastructure opportunities around the world and make appropriate investment decisions.*

*It will also carry out appropriate asset consolidation and streamline operations to maximise returns for shareholders.*



Investment in  
Hongkong Electric

Infrastructure Materials and  
Infrastructure-related Businesses

Infrastructure Investments

# Hongkong Electric Holdings Limited





## Hongkong Electric Holdings Limited

*As a low cost producer of extremely reliable electricity with a state-of-the-art transmission and distribution system, **Hongkong Electric** has again demonstrated an ability to seize new investment opportunities and to achieve new levels of excellence in its traditional business. It will continue to provide a cost-efficient electricity supply that is among the most reliable in the world, and expand its business overseas to provide a more stable earnings platform and balance business risks, while steadily enhancing value for its shareholders.*



**Generation, Transmission and  
Distribution of Electricity**

**Engineering  
Consultancy Services**

**International Investment in  
Power Industries and Infrastructure**