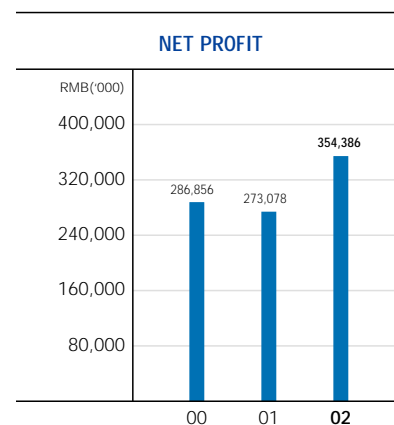
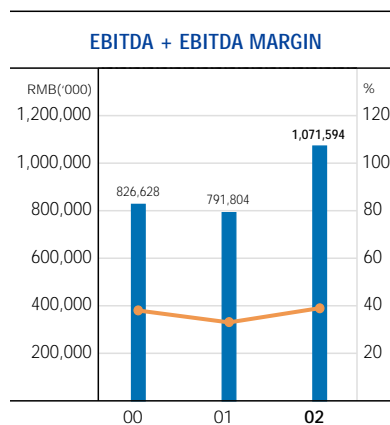
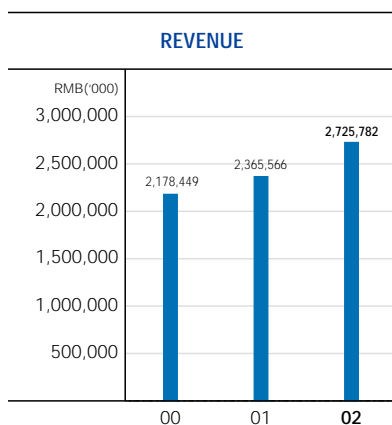


## FINANCIAL HIGHLIGHTS

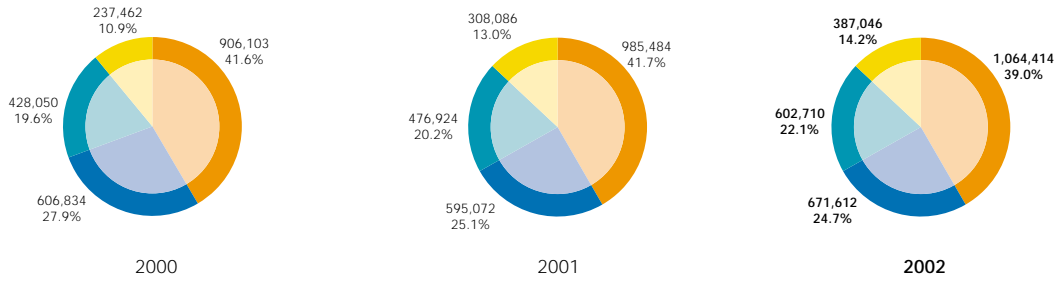
	Year ended December 31		
	Pro forma combined 2000	Pro forma combined 2001	Pro forma combined 2002
	RMB '000	RMB '000	RMB '000
Turnover	2,178,449	2,365,566	2,725,782
Other revenues	3,196	20,996	4,600
Total operating expenses	(1,816,752)	(2,036,972)	(2,247,360)
Profit from operations	364,893	349,590	483,022
Finance costs	24,442	18,191	4,954
Share of profit of jointly-controlled entities	30,961	47,837	42,600
Share of loss of an associate	(33,781)	(3,434)	-
Profit before tax	386,515	412,184	530,576
Tax	(99,659)	(139,106)	(176,190)
Net profit from ordinary activities attributable to shareholders	286,856	273,078	354,386

	Pro forma combined 2000	Pro forma combined 2001	Consolidated 2002
	RMB'000	RMB'000	RMB'000
	<b>NON-CURRENT ASSETS</b>	2,839,537	3,242,867
<b>CURRENT ASSETS</b>	1,678,897	1,787,195	3,499,662
<b>CURRENT LIABILITIES</b>	1,371,992	1,721,057	609,638
<b>TOTAL ASSETS LESS CURRENT LIABILITIES</b>	3,146,442	3,309,005	7,347,894
<b>NON-CURRENT LIABILITIES</b>	422,000	374,000	1,167,299
<b>CAPITAL AND RESERVES</b>	2,724,442	2,935,005	6,180,595



REVENUE BY SEGMENT

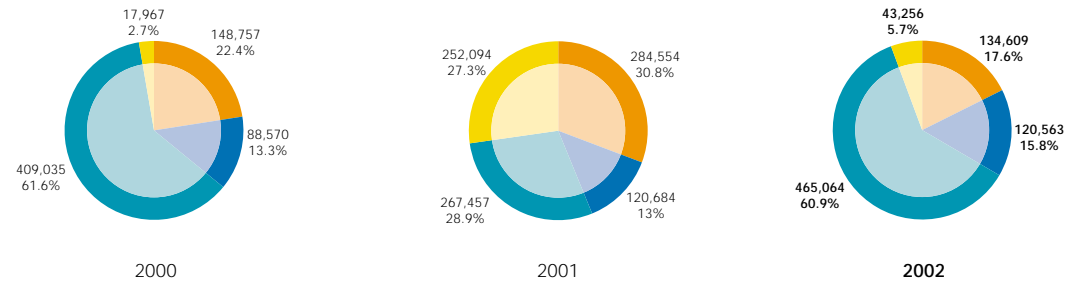
RMB('000)



● Drilling services ● Well services ● Marine support and transportation services ● Geophysical services

CAPITAL EXPENDITURE BY SEGMENT

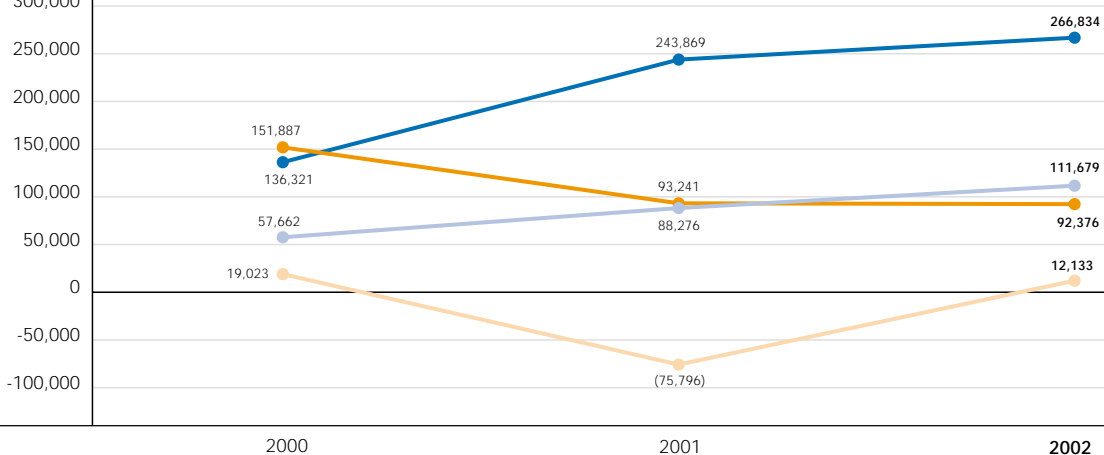
RMB('000)



● Drilling services ● Well services ● Marine support and transportation services ● Geophysical services

OPERATING PROFIT BY SEGMENT

RMB('000)



● Drilling services ● Well services ● Marine support and transportation services ● Geophysical services