

# Financial and Operating Highlights

(Amounts expressed in millions of Rmb)

## Consolidated Income Statements

For the year ended 31st December	1998	1999	2000	2001	2002
Operating revenue	5,067	5,220	5,694	6,551	8,018
Profit before taxation	1,809	1,874	2,070	2,146	2,010
Taxation	(592)	(624)	(695)	(714)	(672)
Profit after taxation	1,217	1,250	1,375	1,432	1,338
Minority interests	—	—	—	6	67
Net profit	1,217	1,250	1,375	1,438	1,405

Note: No analysis of turnover by geographical location has been prepared as 100% of turnover comes from the PRC, and no contribution to profit from any of the geographical location is substantially out of line with normal ratio of profit to turnover.

08

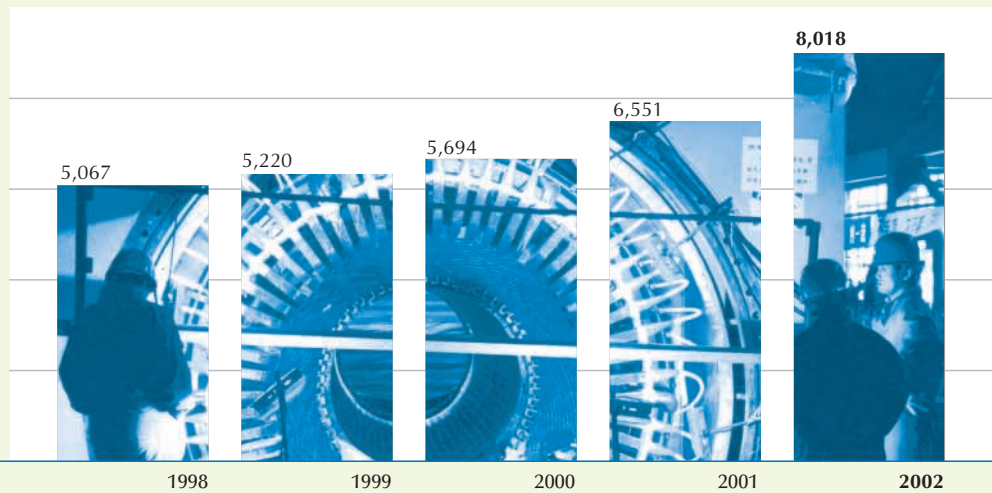
## Consolidated Balance Sheets

As at 31st December	1998	1999	2000	2001	2002
Total assets	14,517	16,208	19,986	23,190	26,819
Total liabilities	(3,530)	(4,103)	(6,652)	(8,808)	(11,533)
Minority interests	(125)	(240)	(403)	(530)	(907)
Shareholders' equity	10,862	11,865	12,931	13,852	14,379

### Consolidated Operating Revenue

(Amounts expressed in millions of Rmb)

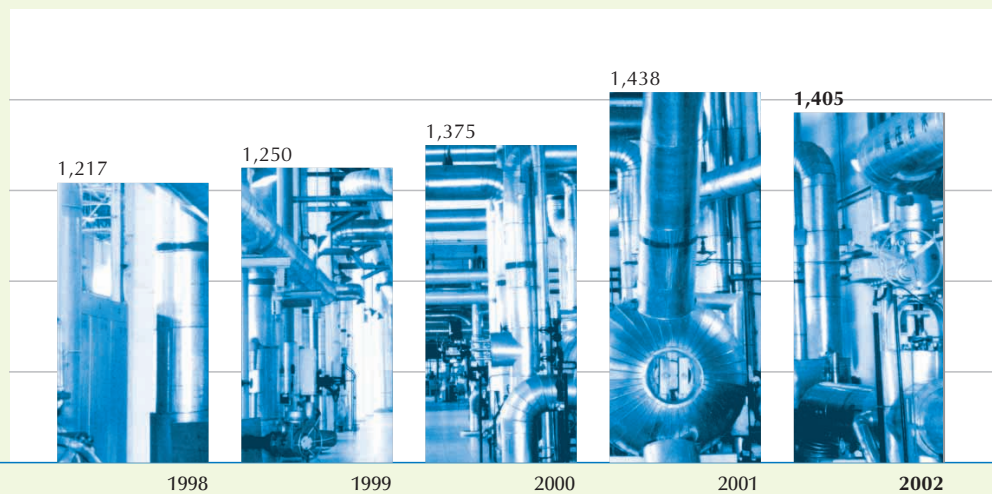
For the year ended 31st December



### Consolidated Net Profit

(Amounts expressed in millions of Rmb)

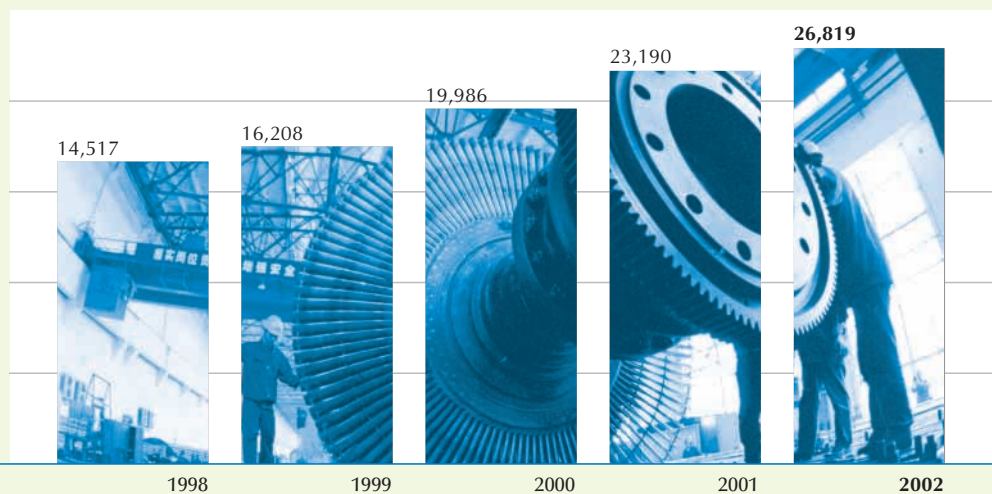
For the year ended 31st December



### Consolidated Total Assets

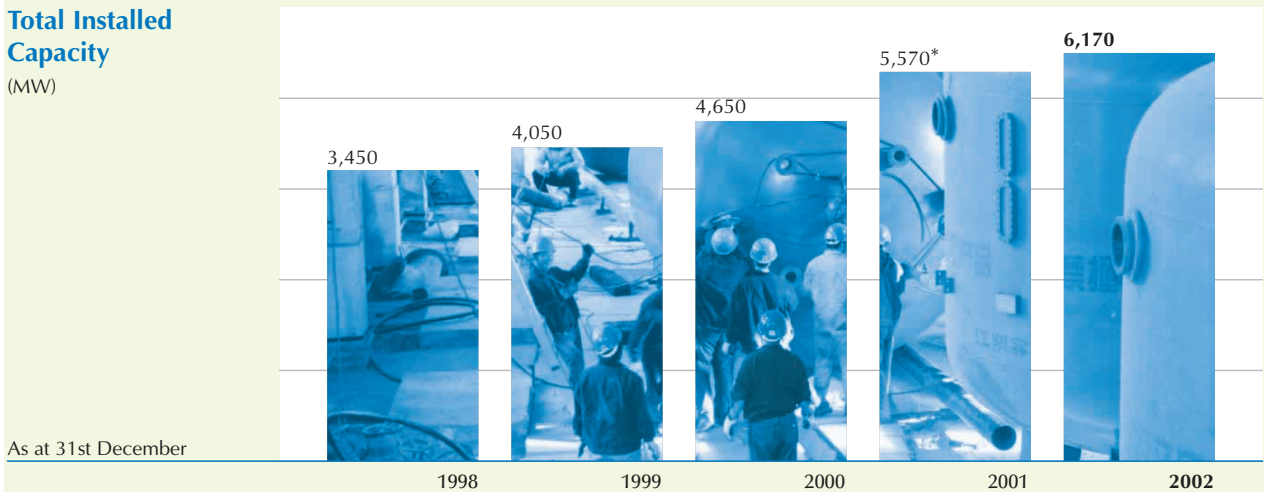
(Amounts expressed in millions of Rmb)

As at 31st December



## Total Installed Capacity

(MW)

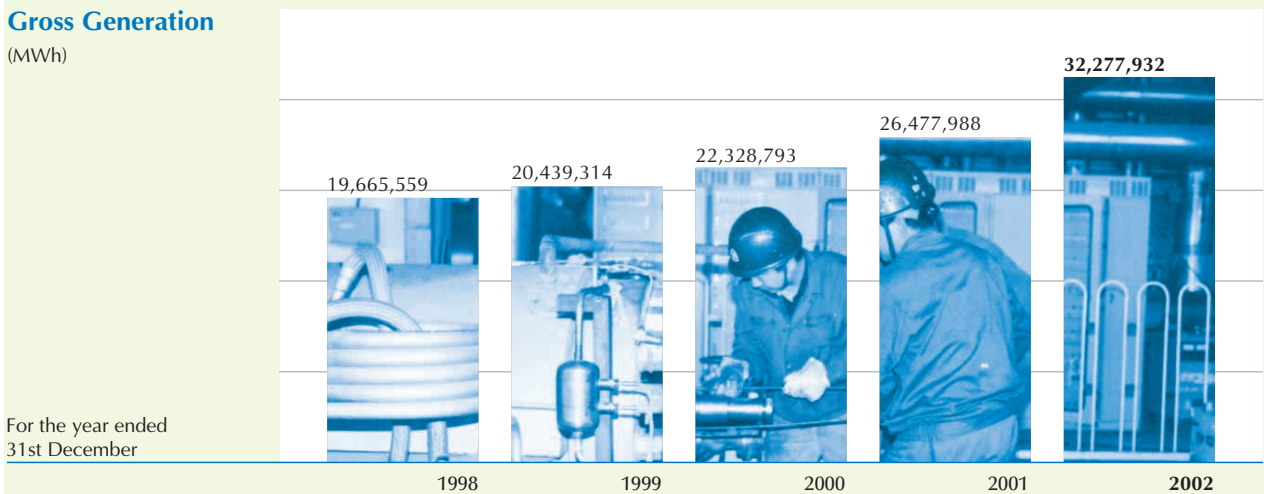


As at 31st December

\* Of which 620MW came from generating units commencing on-grid power generation in that year. Those units commenced commercial operation on 1st January 2002.

## Gross Generation

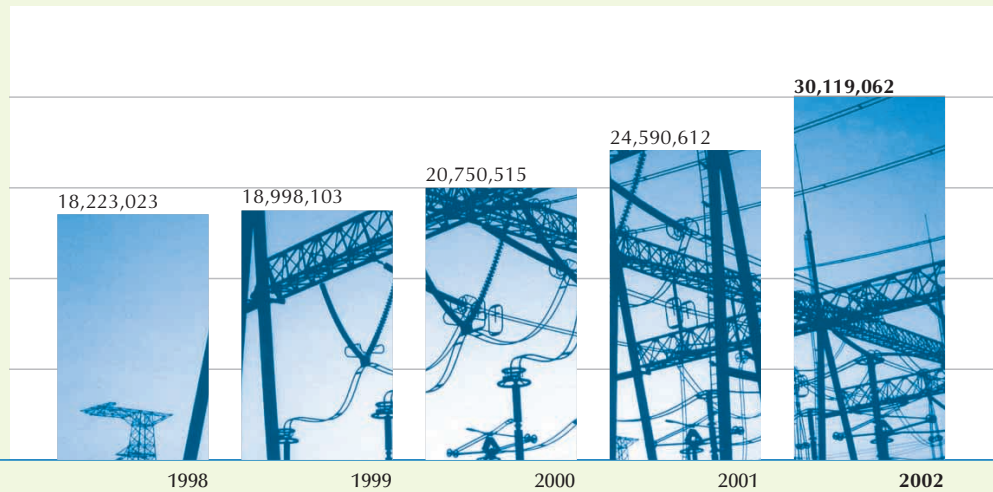
(MWh)



For the year ended  
31st December

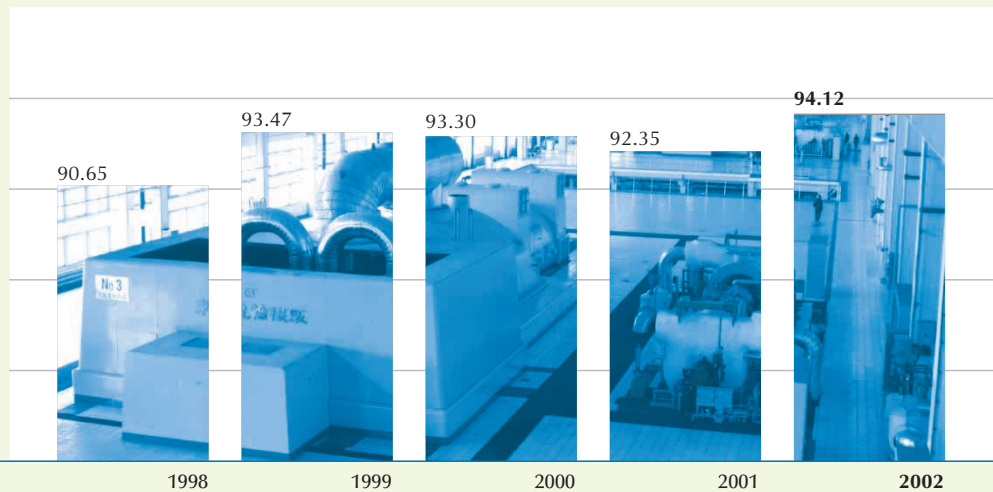
### On-grid Electricity (MWh)

For the year ended  
31st December



### Equivalent Availability Factor (%)

For the year ended  
31st December





*Achieving* More,  
*Emerging* Stronger

