

# Financial Highlights

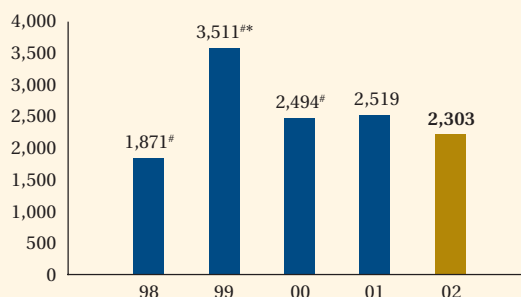
## Results

	2002 <i>HK\$ Million</i>	2001 <i>HK\$ Million</i>
Turnover	11,333	11,725
Operating profit before depreciation, amortisation, interest and tax	6,549	6,138
Profit attributable to shareholders	2,303	2,519
Earnings per share	HK\$0.94	HK\$1.03
Dividend per share	HK\$0.56	HK\$0.78

## Financial Position

Total assets	81,014	88,464
Net debts	20,454	19,771
Shareholders' equity	48,713	54,645
Net assets per share	HK\$19.91	HK\$22.33
Net debts to total assets (excluding cash)	26.0%	23.4%
Net debts to shareholders' equity	42.0%	36.2%

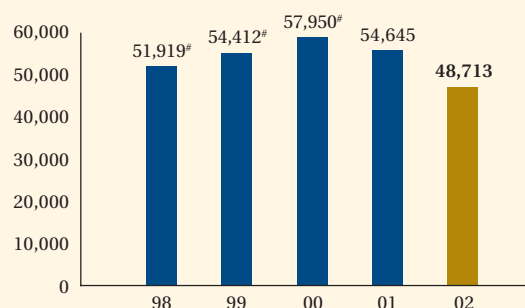
**GROUP PROFIT TO SHAREHOLDERS**  
(HK\$ Million)



<sup>#</sup> Restated

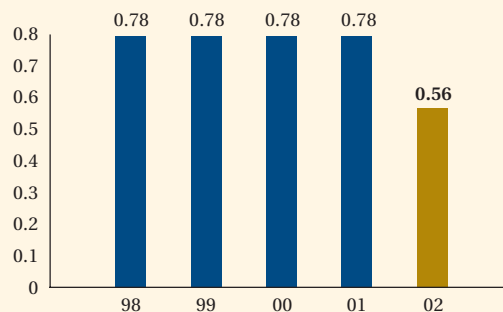
<sup>\*</sup> 1999 included deemed profit on partial disposal of i-CABLE

**SHAREHOLDERS' FUNDS**  
(HK\$ Million)

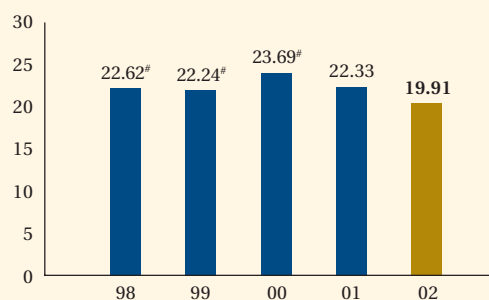


<sup>#</sup> Restated

**DIVIDEND PER SHARE**  
(HK\$)



**NET ASSETS VALUE PER SHARE**  
(HK\$)



<sup>#</sup> Restated