

## DIRECTORS AND ORGANIZATION

### KWOK Ping-sheung, Walter

MSc (Lond), DIC, MICE, JP

*Chairman & Chief Executive (Age: 52)*

Mr. Kwok has been with the Group for 29 years. He holds a Master of Science degree in Civil Engineering from Imperial College, University of London, and is a Member of the Institute of Civil Engineers. He is an Executive Director of SUNeVision Holdings Ltd. and a Director of The Kowloon Motor Bus Holdings Limited, Wilson Parking (HK) Ltd. and Hung Cheong Import & Export Co., Ltd.

He is also a Director of The Real Estate Developers Association of Hong Kong and Tsimshatsui East Property Developers' Association Ltd. and Honorary Treasurer of the Federation of Hong Kong Hotel Owners. On the community front, he is the Chairman of the Former Directors Committee of the Hong Kong Community Chest, Board Member of the Lord Wilson Heritage Trust, a Member of the Young Presidents' Organization (China Chapter) and a Member of the Hong Kong & China Committee of the Pacific Basin Economic Council. He is also a Member of MBA Programmes Committee of The Chinese University of Hong Kong.

Mr. Kwok is an Honorary Citizen of Beijing & Guangzhou and a Standing Committee Member of the National Committee of the Chinese People's Political Consultative Conference. Mr. Kwok is the elder brother of Mr. Kwok Ping-kwong, Thomas and Mr. Kwok Ping-luen, Raymond.

### Dr. LEE Shau-kee

DBA(Hon), DSSc(Hon), LLD(Hon)

*Non-Executive Director*

*Vice Chairman (Age:74)*

Dr. Lee has been a Non-Executive Director of the Company for the last 31 years. He is the Founder and Chairman and Managing Director of Henderson Land Development Company Ltd. and Henderson Investment Ltd. He has been engaged in property development in Hong Kong for more than 47 years. He is also Chairman of Henderson Cyber Ltd., The Hong Kong and China Gas Company Ltd. and Miramar Hotel and Investment Company, Ltd. as well as a Director of Henderson China Holdings Ltd., Hong Kong Ferry (Holdings) Company Ltd. and The Bank of East Asia, Limited.

### KWOK Ping-kwong, Thomas

MSc (Bus Adm), BSc (Eng), FCPA, JP

*Vice Chairman & Managing Director (Age:51)*

Mr. Kwok is Vice Chairman & Managing Director of Sun Hung Kai Properties Limited, and has been with the Group for 26 years. He is also Chairman of Route 3 (CPS) Company Limited, Joint Chairman of IFC Development Limited, an Executive Director of SUNeVision Holdings Ltd. and an Independent Non-Executive Director of The Bank of East Asia, Limited. Mr. Kwok holds a Master's degree in Business Administration from The London Business School, University of London and a Bachelor's degree in Civil Engineering from Imperial College, University of London.

He is Executive Vice President of The Real Estate Developers Association of Hong Kong. He also serves as a government appointed Member of the Provisional Construction Industry Co-ordination Board and Council for Sustainable Development.

## DIRECTORS AND ORGANIZATION

In the past he served as a Member of the Business Advisory Group, the Land & Building Advisory Committee, the Registered Contractors' Disciplinary Board and the General Chamber of Commerce Industrial Affairs Committee. He was also Chairman of the Property Management Committee of the Building Contractors' Association and a Council Member of the Hong Kong Construction Association.

He previously served as a Board member of the Community Chest of Hong Kong, as a member of the Social Welfare Policies & Services Committee, and on the Council of The Open University of Hong Kong

Mr. Kwok is an Honorary Citizen of Guangzhou and a Standing Committee Member of the Ninth Chinese People's Political Consultative Conference Shanghai Committee.

Mr. Kwok is the younger brother of Mr. Kwok Ping-sheung, Walter and the elder brother of Mr. Kwok Ping-luen, Raymond.

### KWOK Ping-luen, Raymond

MA (Cantab), MBA, Hon DBA

*Vice Chairman & Managing Director (Age:50)*

Mr. Kwok has been with the Group for 25 years. He holds a Master of Arts degree in Law from Cambridge University, a Master's degree in Business Administration from Harvard University and an Honorary Doctorate degree in Business Administration from The Open University of Hong Kong. He is Chairman and Chief Executive Officer of SUNeVision Holdings Ltd., Chairman of SmarTone Telecommunications Holdings Limited and a Director of The Kowloon Motor Bus Holdings Limited, Route 3 (CPS) Company Limited and Airport Freight Forwarding Centre Company Limited.

In civic activities, Mr. Kwok is a Non-Executive Director of the Securities and Futures Commission, a Director of The Real Estate Developers Association of Hong Kong, a Member of the General Committee of The Hong Kong General Chamber of Commerce, a Member of the Hong Kong Port Development Council, Vice-Chairman of the Council of The Chinese University of Hong Kong. He is also Chairman of the Management Committees of the Police Children's Education Trust and the Police Education and Welfare Trust. Mr. Kwok is the younger brother of Mr. Kwok Ping-sheung, Walter and Mr. Kwok Ping-kwong, Thomas.

### The Hon Sir Sze-yuen CHUNG

GBM, GBE, PhD, FREng, JP

*Independent Non-Executive Director (Age: 85)*

Sir Sze-yuen Chung is Chairman and Non-Executive Director of The Kowloon Motor Bus Holdings Limited. He is also Director of CLP Holdings Limited and Pro-Chancellor of Hong Kong University of Science & Technology. He has contributed significantly in Hong Kong's political, industrial and tertiary education fields for over four decades. He was Senior Member of Hong Kong Legislative Council (1974-78), Executive Council (1980-88), and Convenor of HKSAR Executive Council (1997-99). He was Chairman of Federation of Hong Kong Industries (1966-70), and Hong Kong Productivity Council (1974-78); and President of Engineering Society of Hong Kong (1960-61) and Hong Kong Academy of Engineering Sciences (1994-97). He established Hong Kong Polytechnic in 1972, City Polytechnic in 1984, Hong Kong University of Science & Technology in 1991 and Hospital Authority in 1990. He was deeply involved in the Sino-British Negotiation on Hong Kong's future (1982-85) and the establishment of the Hong Kong Special Administrative Region (1994-97).

## DIRECTORS AND ORGANIZATION

**Sir Po-shing WOO**

Hon.LLD., FCI Arb, F.I.Mgt., FlntSD

*Independent Non-Executive Director (Age:74)*

Sir Po-shing Woo has been a Non-Executive Director of the Company since 1972. He is a solicitor and a consultant of Woo, Kwan, Lee & Lo, Solicitors & Notaries, a Director of Henderson Development Ltd., Henderson Land Development Co., Ltd. and Henderson Investment Ltd. He was admitted to practise as solicitor in England and Hong Kong and is also a Fellow of The Hong Kong Management Association, The Chartered Institute of Arbitrators, The Institute of Management and The Institute of Directors of England. He was awarded an Hon.LLD. by The City University of Hong Kong and is a Fellow of King's College of London as well as Honorary Professor of Nankai University of Tianjin. He is also the Founder of the Woo Po Shing Medal in Law and the Woo Po Shing Overseas Summer School Travelling Scholarship, both at The University of Hong Kong, and the Woo Po Shing Professor (Chair) of Chinese and Comparative Law at City University.

**Dr. FUNG Kwok-king, Victor**

BSc, MSc, PhD

*Independent Non-Executive Director (Age:58)*

Dr. Victor Fung was appointed as an Independent Non-Executive Director in May 1999. Dr. Fung is Chairman of the Li & Fung Group, the Airport Authority and The Hong Kong University Council, a Non-Executive Director of BOC Hong Kong (Holdings) Ltd., PCCW Limited, Kerry Properties Ltd. and Orient Overseas (International) Ltd. and Director of a number of other companies. He holds a Bachelor and a Master Degree from the Massachusetts Institute of Technology, a Doctorate from Harvard University.

**KWAN Cheuk-yin, William**

LLB

*Independent Non-Executive Director (Age: 69)*

Mr. William Kwan was appointed as an Independent Non-Executive Director in July 1999. As a Senior Partner with the Solicitors firm of Woo, Kwan, Lee & Lo, Mr. Kwan has 41 years of experience in legal practice. He is a former Director and Advisor and currently a voting member of the Tung Wah Group of Hospitals, a past member of the Stamp Advisory Committee, Vice Chairman of the Hong Kong Scout Foundation, President of the Hong Kong Branch of the King's College London Association, President of the Hong Kong Philatelic Society, Vice Chairman of the Federation of Inter-Asia Philately, a permanent advisor of Wah Yan (Hong Kong) Past Students Association, a Legal Advisor of the South China Athletic Association and an Honorary Legal Advisor of the Hong Kong Society for Reproductive Society.

Mr. Kwan was Commissioner General and Vice Chairman of the Organizing Committees of the Hong Kong '94, '97 and 2001 Stamp Exhibitions. He served on the Hong Kong Golf Club General Committee on several occasions in various capacities. He graduated from King's College, London University and is a Fellow of both King's College and the Institute of Arbitrators.

**LO Chiu-chun, Clement**

*Non-Executive Director (Age: 73)*

Mr. Lo was an Executive Director of the Company and the Company Secretary of the Group for 28 years before he resigned from both positions in early 1998. Mr. Lo has been in the property development industry since 1960s.

## DIRECTORS AND ORGANIZATION

### LAW King-wan

*Non-Executive Director (Age:67)*

Mr. Law was an Executive Director of the Company. He headed the Sales Department of the Group for 32 years before he retired at end of September 2001. He is a Standing Committee Member of the Chinese General Chamber of Commerce, Founding President of the Hong Kong Institute of Real Estate Administration and President of the Shun Tak Fraternal Association.

### CHAN Kai-ming

CEng, FIStructE, MICE

*Executive Director (Age:71)*

Mr. Chan has been an Executive Director since 1981. Mr. Chan also served as an appointed Member of the District Board of Shatin for three years from 1985.

### CHAN Kui-yuen, Thomas

B Comm

*Executive Director (Age:57)*

Mr. Chan graduated from the United College, The Chinese University of Hong Kong. He joined the Group in 1973 and is now responsible for land acquisitions and project planning matters. Mr. Chan is also an Executive Director of SUNeVision Holdings Ltd.

### KWONG Chun

*Executive Director (Age:74)*

Mr. Kwong graduated from the Zhong Nan Finance & Economics College of Wuhan in China. He worked for the Guangzhou office of the People's Bank of China before coming to Hong Kong in 1962 to work for Eternal Enterprises Ltd. He was transferred to Sun Hung Kai Enterprises Ltd. in 1963. In 1972, Sun Hung Kai Properties Ltd. became a listed company and he has worked for it ever since. He was appointed an Executive Director in 1992.

### WONG Yick-kam, Michael

BBA, MBA

*Executive Director (Age:51)*

Mr. Wong has been with the Group for 22 years. He obtained his Bachelor's and Master's degrees in Business Administration from The Chinese University of Hong Kong. He was appointed an Executive Director in 1996 and is currently responsible for the Group's strategic planning, corporate development, infrastructure projects, financial investments and relations with the investment community. Mr. Wong is Deputy Chairman of RoadShow Holdings Limited. He is also an Executive Director of SUNeVision Holdings Ltd. and a Non-Executive Director of SmarTone Telecommunications Holdings Limited and USI Holdings Limited.

## DIRECTORS AND ORGANIZATION

**WONG Chik-wing, Mike**

FHKIS, Registered Professional Surveyor (BS)

*Executive Director (Age:47)*

Mr. Wong graduated from the Hong Kong Polytechnic with distinction. He is a Fellow of the Hong Kong Institute of Surveyors and a Registered Professional Surveyor. He joined the Group in 1981 and was appointed an Executive Director in 1996. He is currently responsible for project management matters of the Group's development projects.

**SO Hing-woh, Victor**

MBA, FHKIS, FRICS, FHKIH, FCIH, RPHM, JP

*Executive Director (Age: 57)*

Mr. Victor So was appointed as an Executive Director of the Company in October 2002. Mr. So is in charge of the Group's property business in Shanghai and Southern China as well as the leasing of the Group's office premises in Hong Kong.

Prior to joining the Group, Mr. So was the Executive Director of Hong Kong Housing Society and had held senior positions in other private and public organizations. In terms of community services, Mr. So is currently Member of the Kowloon-Canton Railway Corporation Managing Board, Corruption Prevention Advisory Committee and Infrastructure Development Advisory Committee of Trade Development Council. Previously, he had also served on the Long Term Housing Strategy Advisory Committee, Hong Kong Housing Authority and Town Planning Board as Member.

Mr. So holds a Master's degree in Business Administration from The Chinese University of Hong Kong. He is a Registered Professional Housing Manager, Fellow Member of the Royal Institution of Chartered Surveyors, Chartered Institute of Housing, Hong Kong Institute of Surveyors and Hong Kong Institute of Housing.

**WOO Ka-biu, Jackson**

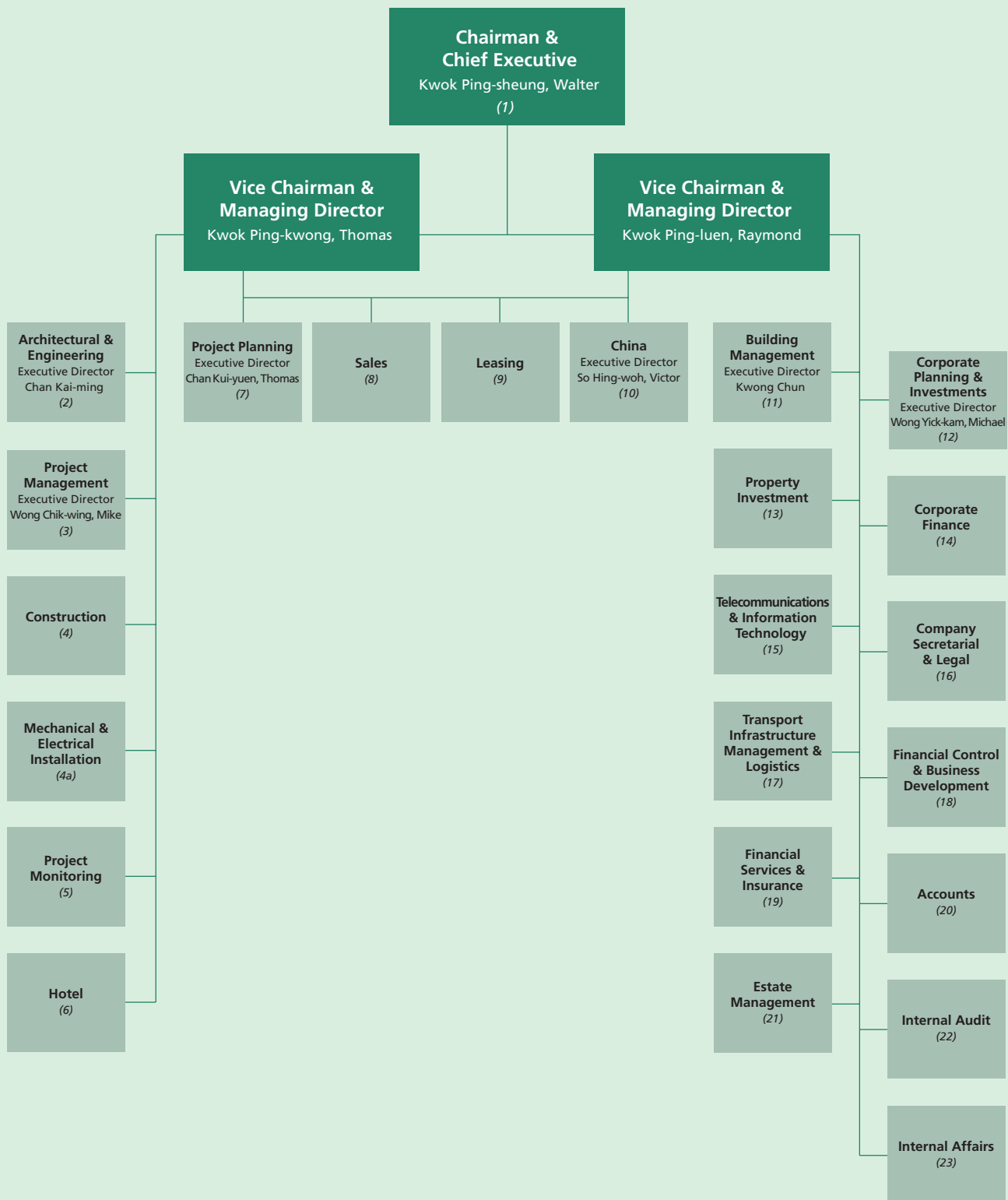
MA (Oxon)

*Alternate Director to Sir Po-shing Woo (Age:41)*

Mr. Woo was appointed as an Alternate Director to Sir Po-shing Woo in October 2002. Mr. Woo is also a Director of N. M. Rothschild & Sons (Hong Kong) Limited. He holds a Master's degree in Jurisprudence from Oxford University and is qualified as a solicitor in Hong Kong, Australia, England and Wales. Mr. Woo was a partner in the corporate finance department of Woo, Kwan, Lee & Lo and is now a consultant to the firm. He is an Independent Non-Executive Director of Henderson Cyber Ltd. Mr. Woo is also an Alternate Director to Sir Po-shing Woo, an Independent Non-Executive Director of Henderson Land Development Company Ltd. and Henderson Investment Ltd. Mr. Woo is the son of Sir Po-shing Woo.

DIRECTORS AND ORGANIZATION

ORGANIZATION CHART AND SENIOR EXECUTIVES



## DIRECTORS AND ORGANIZATION

**(1) EXECUTIVE COMMITTEE****Kwok Ping-sheung, Walter**

MSc(Lond), DIC, MICE, JP

*Chairman and Chief Executive***Kwok Ping-kwong, Thomas**

MSc(Bus Adm), BSc(Eng), FCPA, JP

*Vice Chairman and Managing Director***Kwok Ping-luen, Raymond**

MA(Cantab), MBA, Hon DBA

*Vice Chairman and Managing Director***Chan Kai-ming**

CEng, FStructE, MICE

*Executive Director (Architectural & Engineering)***Chan Kui-yuen, Thomas**

B Comm

*Executive Director (Project Planning)***Kwong Chun***Executive Director (Building Management)***Wong Yick-kam, Michael**

BBA, MBA

*Executive Director (Corporate Planning & Investments)***Wong Chik-wing, Mike**

FHKIS, RPS(BS)

*Authorized Person**Executive Director (Project Management)***So Hing-woh, Victor**

MBA, FHKIS, FRICS, FHKIH, FCIH, RPHM, JP

*Executive Director (China)***(1a) CHAIRMAN'S OFFICE****Yung Wing-chung***Corporate Advisor***Leung Kui-king, Donald**

BSc

*Assistant to Chairman***Au Shiu-tung, Patrick**

FRICS, FHKIS, RPS

*Authorized Person**Project Planning Advisor***Chien Yuan-hwei, George**

BSc(Eng), MSc, DIC, CEng, PEng, FICE, MITE

*Transportation Advisor***So Sing-tak, Andrew**

BA, MBA

*Special Assistant to Vice Chairman & Managing Director***(2) ARCHITECTURAL AND ENGINEERING****Chan Kai-ming**

CEng, FStructE, MICE

*Executive Director***Sitt Nam-hoi**

BA(Hons), BArch(Distinction), HKIA

*Registered Architect**Authorized Person**Chief Architect***Yu Chung-yeung**

CEng, FStructE, FHKIE, MICE, RSE, RPE

*Principal Engineer***Li Kwong-hing**

BSc(Eng), MSc, DIC, CEng, MIMechE, MCIBSE, MHKIE, RPE

*Chief Building Services Engineer***Ng Tze-kwan, Jeff**

BArch, MAIBC, MRAIC, HKIA

*Registered Architect**Authorized Person**Deputy Chief Architect***Yau Hin-chung, William**

BA(AS)

*Deputy Manager***Li Chun-kou**

BSc(Eng)

*Consultant***Choi Siu-chuen**

MHKIE

*Deputy Chief Building Services Engineer***Leung Yuen-dick, Dick**

BArch, MA Arbitration, HKIA

*Registered Architect**Authorized Person**Senior Architect***Lau Kay-shui**

MSc, CEng, MStructE, MHKIE, RPE, RSE

*Senior Structural Engineer***Chiu Wai-kuen, Stephen**

BSc(Eng)

*Senior Structural Engineer***Chiu Tai-shing, Joseph**

BASc

*Senior Structural Engineer***Li Ka-wing***Assistant Manager***(3) PROJECT MANAGEMENT****Wong Chik-wing, Mike**

FHKIS, RPS(BS)

*Authorized Person**Executive Director***Tung Chi-ho, Eric**

BA(AS)Hons, BArch, RIBA, HKIA

*Registered Architect**Authorized Person**Manager***Tam Tin-fong, Martin**

BArch, RIBA, FHKIA

*Registered Architect**Authorized Person**Manager***Au Yeung Shiu-keung**

BSc(Eng), CEng, FHKIE, FCIBSE, FIEE, FIEAust

*Manager***Au Ho-cheung, David**

BSc(Arch), MArch, HKIA

*Registered Architect**Authorized Person**Deputy Manager***Chu Kwok-kit, Ringo**

BA(AS), BArch, RIBA, HKIA, ARAIA

*Registered Architect**Authorized Person**Deputy Manager***Lu Chee-yuen, Spencer**

BEng, MEng, CEng, MStructE, MHKIE, RPE

*Authorized Person**Deputy Manager***Wong Kim-wing, Ball**

BA(AS), BArch, HKIA

*Registered Architect**Authorized Person**Deputy Manager***Ng Chak-kin, Clarence**

BA(AS), BArch, RIBA, HKIA, ARAIA

*Registered Architect**Authorized Person**Assistant Manager***Woo Yan-fan, Stella**

BA(AS), MArch, MBA, HKIA

*Registered Architect**Authorized Person**Assistant Manager***Chiu Hon-hang, Elvin**

BES, BEDS, BArch, RIBA, HKIA

*Registered Architect**Authorized Person**Assistant Manager*

## DIRECTORS AND ORGANIZATION

**Chan Hong-ki, Robert**

BSc, MRICS, MHKIS, RPS(BS)

*Authorized Person**Assistant Manager***Ip Pui-tung, Paul**

BA(AS), BArch, HKIA, RIBA

*Registered Architect**Authorized Person**Assistant Manager***Cheung Chin-hung**

BEng(Hons), CEng, MHKIE, MICE, MGSJK, EUR.ING, RPE

*Assistant Manager***(3a) KOWLOON STATION  
PROJECT OFFICE****Wong Chik-wing, Mike**

FHKIS, RPS(BS)

*Authorized Person**Executive Director***Chan Kai-ming**

CEng, FIStructE, MICE

*Executive Director & Consultant***Sitt Nam-hoi**

BA(Hons), BArch(Distinction), HKIA

*Registered Architect**Authorized Person**Project Director***Chu Kwok-kit, Ringo**

BA(AS), BArch, RIBA, HKIA, ARAIA

*Registered Architect**Authorized Person**Deputy Project Director***Cheung Kai-wah, Gabriel**

MConstMgt, FHKIS, FRICS, FCIQB, MCIARB, MACostE, FHKICM, RPS(QS)

*Senior Project Manager (Cost & Contract)***Lau Man-kwan, Julia**

BArch, HKIA, Assoc AIA

*Registered Architect**Authorized Person**Project Manager (Architectural)***(4) CONSTRUCTION****Wong Chik-wing, Mike**

FHKIS, RPS(BS)

*Authorized Person**Executive Director***Chien Chung-kwong, Philip**

BSc, MEng

*Consultant***Kwok Leung Kit-kan, Ingrid**

MSc(Bus Adm), BSc(Hons), CEng, MBCS, MHKIE

*Manager***Tsoi Siu-ho, Robert**

BSc, MSc, FHKSA, ACMA, ARCS, DIC

*Manager (Central Functions)***Lee Bing-shu***Manager (Construction Management)***Mo Kon-fei, Kenneth**

MSc(Eng), MBA, CEng, MHKIE, MICE, RSE

*Authorized Person**Deputy Manager (Construction Management)***Lu Chee-yuen, Spencer**

BEng, MEng, CEng, MIStructE, MHKIE, RPE

*Authorized Person**Deputy Manager (Construction Management)***Chan Hon-ye**

ACMA, AHKSA

*Deputy Manager (Construction Management)***Tsoi Yuk-man, Desmond**

MA, FCIArb, MRICS, MHKIS, MCIQB

*Deputy Manager (Construction Management)***Hui Lin-sing, Roger**

BSc(Eng), CEng, MICE, MIStructE, MHKIE, RSE, RPE

*Deputy Manager (Construction Management)***Wong Leung Kit-wah, Linda***Deputy Manager (Purchasing)***Lam Fuk-wing**

BSc (Civil Eng)

*Assistant Manager (Construction Management)***Lee Kwok-wa, Chris***Assistant Manager (Construction Management)***Cheung Kam-fan***Assistant Manager (Construction Management)***Tse Kam-hon, Sidney***Consultant (Construction Management)***Ng Kwok-cheung, Barry**

BCSc (Hons)

*Assistant Manager (Information Technology)***Lau Wai-keung, Dennis**

MRICS, MHKIS

*Assistant Manager (Contract Subletting)***Chan Kin-wah, Jonathan**

TechRICS

*Assistant Manager (Contract Subletting)***Lai Wai-ching, Phoebe**

MSc, FCCA, AHKSA

*Assistant Manager (Accounting)***Chan Ying-kuen, David***Assistant Manager (Accounting)***Fung Chi-on, Ricky***Assistant Manager (Purchasing)***Lai Siu-ki, Pele**

MIHRM(HK)

*Assistant Manager (Personnel & Administration)***Mak Kwok-leung**

BSc, CEng, MIMechE, MHKIE, RPE

*Assistant Manager (Plant & Machinery)***(4a) MECHANICAL AND  
ELECTRICAL INSTALLATION****Yu Yiu-wing***Manager***Sin Hung-fai***Assistant Manager (Fire Services)***Ng Chung-ming***Assistant Manager (Fire Services)***Chan Chor-tat, Gilbert***Assistant Manager (Fire Services)***Tam Ping-ip**

DMS, MIEEE

*Assistant Manager (Electrical Services)***Pang Ki-kai**

AIIIM

*Assistant Manager (Electrical Services)***Lam Chung-mo, Moses**

BEng(Hons), CEng, MIEE, MHKIE, RPE

*Assistant Manager (Electrical Services)***(5) PROJECT MONITORING****Luk Wang-kwong, John**

BSc(Eng), LLB, MSc(Eng), MBA, PDCE, PhD, CEng, FICE, FIStructE, FHKIE, FCIArb

*Project Advisor***Wong Wai-tung**

MA Arb, FHKIE, FCIQB, MCIARB, RPE

*Deputy Manager***Tsang Wai-keung, Savio**

MBA, MRICS, MHKIS, MCIQB, MCIARB, MASI

*Assistant Manager***(6) HOTEL****Rudolf Greiner***President, Hotel Division***a. Royal Garden Hotels  
International Corporation****Chow Yum-chong, Francis**

FCCA, FHKSA

*Vice President (Finance)*



## DIRECTORS AND ORGANIZATION

**The Royal Garden**

**Chan Tin-yau, Keven**  
CHSP  
General Manager

**Cheung Kin-man, Ricky**  
B Comm, CPA (Aust), AHKSA  
Financial Controller

**b. New Town Management Company Limited**

**Wong Hoi-jen, Rebecca**  
Vice President (Operations & Planning)

**Royal Park Hotel**

**Wong Hoi-jen, Rebecca**  
General Manager

**Tang Cheuk-wai, Willy**  
Executive Assistant Manager (Marketing)

**Tam Kam-ming, Andrew**  
Financial Controller

**Royal Plaza Hotel**

**Wong Hoi-jen, Rebecca**  
General Manager

**Kwok Kam-moon, Sunny**  
Executive Assistant Manager (Operation)

**Lee Chi-keung, Marvey**  
Financial Controller

**(7) PROJECT PLANNING**

**Chan Kui-yuen, Thomas**  
B Comm  
Executive Director

**Roger Nissim**  
FRICS, FHKIS, FCIArb, RPS  
Manager

**Fung Chu-hee, Andrew**  
MSc(IRE), MRICS, MHKIS, RPS  
Chartered Valuation Surveyor  
Manager

**Yiu Wai-ha, Connie**  
MRICS, MHKIS, RPS  
Deputy Manager

**Siu Man-wai**  
BSc(Hons), MRICS, MHKIS, RPS  
Chartered Valuation Surveyor  
Deputy Manager

**(8) SALES**

**a. Chow Kwok-yin, Eric**  
Manager

**Yim Dao-kit**  
Deputy Manager

**Kong Kit**

Deputy Manager

**Lam Po-tung, Josephine**  
BA  
Deputy Manager

**b. Lui Ting, Victor**  
BBA  
Manager

**Chan Sau-yin, Anita Teresa**  
MRICS, MHKIS, RPS  
Deputy Manager

**(9) LEASING****Retail**

**a. Chan Kai-ming**  
CEng, FStructE, MICE  
Executive Director

**Lam Ka-keung, Henry**  
BSc(Hons), MSc(Const & Real Est)  
Manager

**b. Fung Sau-yim, Maureen**  
BSc(Hons)Est. Mgt.,  
MHousMan(Distinction), MBA, FIIM,  
MHIREA  
Deputy Manager

**c. Au Yeung Hau-cheong**  
Manager

**Law Yee-wah, Alice**  
BEC, PDipSurv  
Deputy Manager

**d. Lee Hoo-tim, Peter**  
Consultant

**e. Wu Po-ong, Lawrence**  
BA(Hons)  
Manager

**f. Ho Lick-tin**  
Deputy Manager

**Fung Yick-lam, Cris**  
Assistant Manager

**Office**

**So Hing-woh, Victor**  
MBA, FHKIS, FRICS, FHKIH, FCIH, RPHM, JP  
Executive Director

**Pih Kam-shen, Philip**  
FBSOMES, MHKIE, MASHRAE, MRSES,  
MHIREA, RPE  
Deputy Manager (Building Services & Maintenance)

**Poon Yin-han, Connie**  
BA, AHKSA  
Assistant Manager

**a. Chu Chung-kai, Samson**  
BSc(Hons), MRICS, MHKIS  
Manager

**Lau Lai-ching, Elijah**

Dip.BS(Mktg), MHIREA, MCIH, MHKIH  
Deputy Manager (Leasing & Management)

**Man Chi-fung, Rick**  
BA  
Assistant Manager

**b. Ng Kwok-keung**  
BSc  
Assistant Manager

**c. Lam Ka-keung, Henry**  
BSc(Hons), MSc(Const & Real Est)  
Manager

**Residential (Signature Homes)**

**Chiu Ching-shi, Iris**  
B Comm  
Deputy Manager

**(10) CHINA**

**So Hing-woh, Victor**  
MBA, FHKIS, FRICS, FHKIH, FCIH, RPHM, JP  
Executive Director

**Kwong Chun**  
Executive Director

**Chan Kui-yuen, Thomas**  
B Comm  
Executive Director

**Tam Tin-fong, Martin**  
BArch, RIBA, FHKIA  
Registered Architect  
Authorized Person  
Manager

**Zhou Yimin, Andrew**  
MBA, CMgr  
Manager

**Chau Sai-yim, Stephen**  
Deputy Manager

**Cheng Cheung-fuk**  
BA, B Comm  
Deputy Manager

**Chui Ching-sai, Alex**  
BSc, MBA  
Assistant Manager

**Fok Yau-kit**  
FCEA, DMS, MBIM  
Assistant Manager

**Lam Kam-wing, Stafen**  
MCIM, MSc  
Assistant Manager

**Wong Kai-kwong, Patrick**  
BES, MBA, CMA  
Assistant Manager

**Cheng Chung-ho, Jeremy**  
BSc(Hons), CPE(English law), LLB(PRC law),  
MEd, PCE, PCLL  
Assistant Manager

## DIRECTORS AND ORGANIZATION

**(11) BUILDING MANAGEMENT****Kwong Chun***Executive Director***Mok Chi-hung**

FCIH, FHKIH, MHIREA, RPHM

*Manager***Kwong Ching-wai, Alkin**

BSc(Eng), PgDIT, MStructE, MHKIE, RPE, RSE

*Authorized Person**Manager***Lam Chak-hin, Ivan**

SSCE, Foreign Assoc. ASLA

*Deputy Manager (Hong Yip)***Kwok Chan-fai**

MCIH, MHKIH, RPHM

*Deputy Manager (Hong Yip)***Wong Kei-on**

BA, MHKIH, MCIH, RPHM

*Deputy Manager (Hong Yip)***Yau Man-fat, Kelvin**

BSc(Hons), MHousMan, RPHM, MHKIH, MCIH, MIFMA, MIMgt

*Deputy Manager (Hong Yip)***Chan Wah-kay**

B Comm

*Assistant Manager (Personnel)***Lee Tze-leung, Adrian**

BBA, MBA, FCCA, AHKSA, RFP

*Assistant Manager (Accounting)***Leung Nai-yin, Arthur**

BBus, FCCA, FHKSA, ACIB, AHKIB, CGA, CPA(Aust)

*Assistant Manager (Internal Audit)***Ho Yun-kuen, John**

MRICS, MHKIS, PQS, FPFM

*Assistant Manager (Contracts)***Chau Chung-yiu, Dominic**

MBA, MRICS, MHKIS, RPS

*Authorized Person**Assistant Manager (Technical)***Kwan Yu-kuen, Ricky***Assistant Manager (SHK Real Estate Management)***(12) CORPORATE PLANNING AND INVESTMENTS****Wong Yick-kam, Michael**

BBA, MBA

*Executive Director***Ma Sau-hon, Chris**

BSc, MSc, MBA, DIC, CEng, MISE, FHKIE, FICE, RPE

*Manager (Project)***Lau Mei-mui, May***Manager (Corporate Communications)***Wong Pak-ho, Lawrence**

BEng, MBA, CEng, CDipAF, PEng(S'pore), MICE, MCILT, FHKIE

*Manager (Infrastructure)***Lau Shung-oi, Susanna**

BA, ACA

*Manager (Corporate Planning)***Hong Pak-cheung, William**

BSc

*Manager (Investments)***Mak Nak-keung**

BSoc.Sc, MPhil

*Deputy Manager (Economic Research)***Ramsay, Robert Guy**

BA(Hons), PhD

*Assistant Manager***Cheong Suk-ying, Linda**

BSoc.Sc, MBA

*Assistant Manager***Tse Man-kuen, Winnie***Assistant Manager***Poon Chun-wing, Johnny**

BSoc.Sc, MBA, CFA, ACCA

*Assistant Manager***Sung Lai-ha, Louisa**

BEc, MTax

*Assistant Manager***Own Yu-tsan, Dorothy**

MSc (Finance), CFA, FRM

*Assistant Manager***(13) PROPERTY INVESTMENT****Lui Ting, Victor**

BBA

*Manager***Chan Sau-yin, Anita Teresa**

MRICS, MHKIS, RPS

*Deputy Manager***Chiu Ching-shi, Iris**

B Comm

*Deputy Manager***Ng Kwok-keung**

BSc

*Assistant Manager***(14) CORPORATE FINANCE****Au Man-to**

LLB, FCIS, ACIB

*Manager***Kwok Yue-yee, Amy**

B Comm

*Deputy Manager***Ho Ka-wai, Josephine**

MBA

*Assistant Manager***(15) TELECOMMUNICATIONS AND INFORMATION TECHNOLOGY****SmarTone Telecommunications Holdings Limited****Li, Douglas***Chief Executive Officer***SUNeVision Holdings Limited****Yen Shiao-hua, Sheridan***Managing Director***(16) COMPANY SECRETARIAL AND LEGAL****Lai Ho-kai, Ernest**

FCIS

*Company Secretary***Tam Sai-ming, William**

LLM, MSc, MBA, FCIS, MHKSI

*Manager***Yung Sheung-tat, Sandy**

BA(Law)Hons

*Manager***Kwok, Helen**

LLB(London)Hons

*Legal Advisor***Tse Kar-lun, Frankie**

LLB(Hons)

*Assistant Manager***Yeung Ming-yip, Jason**

LLB(Hons)

*Assistant Manager***Wong Chiu-lun, Christopher**

B Comm, LLB

*Assistant Manager***Lai Man-shek**

BA(Law) Hons

*Assistant Manager***(17) TRANSPORT INFRASTRUCTURE MANAGEMENT AND LOGISTICS****Wilson Group****Sham Yat-wah, Samuel***Managing Director***Lui Sung-yee, Alan***Executive Director***Luk Kam-hon, Gary***Director of Parking***Fong Ping, Vincent***Director of Tollways*

## DIRECTORS AND ORGANIZATION

**Wu Tung-chai, Peter***Director of Equipment & Services***Wong Yuk-lan, Nancy***Director of Finance & Administration***Cheng Siu-hung, Paul***General Manager**Autotoll Limited***Logistics Services****Wong Hok-leung, Paul**

BSc, FCCA

*Chairman**Sun Hung Kai Super Logistics Limited***Leung Lai-chi, Michelle**

MMgt

*Executive Director**Sun Hung Kai Super Logistics Limited***Pang Tai-hing, Peter***Operations Director**Airport Freight Forwarding Centre  
Company Limited***(18) FINANCIAL CONTROL AND  
BUSINESS DEVELOPMENT****Wong Hok-leung, Paul**

BSc, FCCA

*Manager***Leung Yu-kai, David**

FCCA, FHKSA

*Manager (Finance and Administration)***Fok Yat-cheung, Edward**

MSc(Eng), AHKIB

*Deputy Manager (EDP)***Wong Yu-ling, Teresa**

MBA, CPA

*Deputy Manager***Cheung Wai-wah**

BBA

*Assistant Manager (EDP)***Leung Cheuk-ming, Eric**

MSc

*Assistant Manager (EDP)***Li Loi-suet, Bonnie**

BBA

*Assistant Manager (Financial Control)***So Wai-kei, Godwin**

BA, ACIB, ACIS

*Assistant Manager (Financial Control)***(19) FINANCIAL SERVICES AND  
INSURANCE****Financial Services****Yung Wing-chung***Consultant***Au Mo-cheung, Alex***Manager***Chung Wah-sang, Welson**

MA, ACIS, MHKSI

*Deputy Manager***Chan Pang-chi***Assistant Manager***Insurance****Chow Ka-yin***Manager***Wong Kwai-chuen, Andrew**

BBA, ACII

*Deputy Manager***Ng Man-tong, Anthony**

ACII, AIIIC

*Deputy Manager***Yim Ka-yan, Amy**

AAII

*Deputy Manager***(20) ACCOUNTS****Pun Wing-mou, Bernard**

FCA, FHKSA

*Chief Accountant***Li Ching-kam, Frederick**

FCCA, AHKSA

*Deputy Chief Accountant***Lee Hung-chak, Maurice**

BBA(Hons), FCCA, AHKSA

*Deputy Manager***Chow Cheuk-wing, Eric**

FCCA, FHKSA

*Senior Accountant***Ko Ping-yin, Albert***Chief Cashier***Yuen Chork, Charles***Assistant Manager***(21) ESTATE MANAGEMENT****Wong Chin-wah, Jimmy**BSc (Est Mgt) Cert Ed, MSISV, MHKIS,  
MAPFM, FHIREA, RPS, RPHM*Manager***Chan Kam-fai**

MCIH

*Deputy Manager***Lam Man-pak, Patrick**

BA(Hons), MCIH, RPHM

*Deputy Manager***Leung Chung-kong, Johnny***Deputy Manager***Lee Cheung-yiu, Gordon**BSc(Hons), MRICS, MCIQB, MHKIS,  
MCI Arb, RPS(BS)*Deputy Manager***Mak Hung-cheung, James***Deputy Manager***Sham Sik-shing, Simon**

BTech(Hons), MCIH

*Assistant Manager***Chan Shing-wai**

Dip.BA, MCIH

*Assistant Manager***Hon Shuk-ching, Irene***Assistant Manager***Shiu Wai-ching, Teresa***Assistant Manager***(22) INTERNAL AUDIT****Chiu Yue-ming, Daniel**

MAcc, FCCA, FHKSA, FCIS, ACMA, FCPA

*Manager***Wong Chung-wai, Barry**

BA(Hons), MBA, FCCA, AHKSA

*Deputy Manager***Hui Sui-tak, Andrew**

MBA, FCCA, AHKSA

*Assistant Manager***(23) INTERNAL AFFAIRS****Wu Tze-cheung, Philip**

BA(Hons), FCCA, FHKSA, MIHRM(HK)

*Manager***Chan Choi-yin, Clara**

MIHRM(HK)

*Deputy Manager (Human Resources  
Management)***Tang Chak-hin**

BBA, MBA

*Deputy Manager (Human Resources &  
Administration)***Leung Lai-chi, Michelle**

MMgt, MIHRM(HK)

*Deputy Manager (Human Resources  
Planning & Development)***Ho Kui-yuen, Kenneth**

BSoc.Sc, MBA, DTM

*Deputy Manager (Training &  
Development)***Wong Ho-keung, Jimmy***Assistant Manager*