

## Company Profile

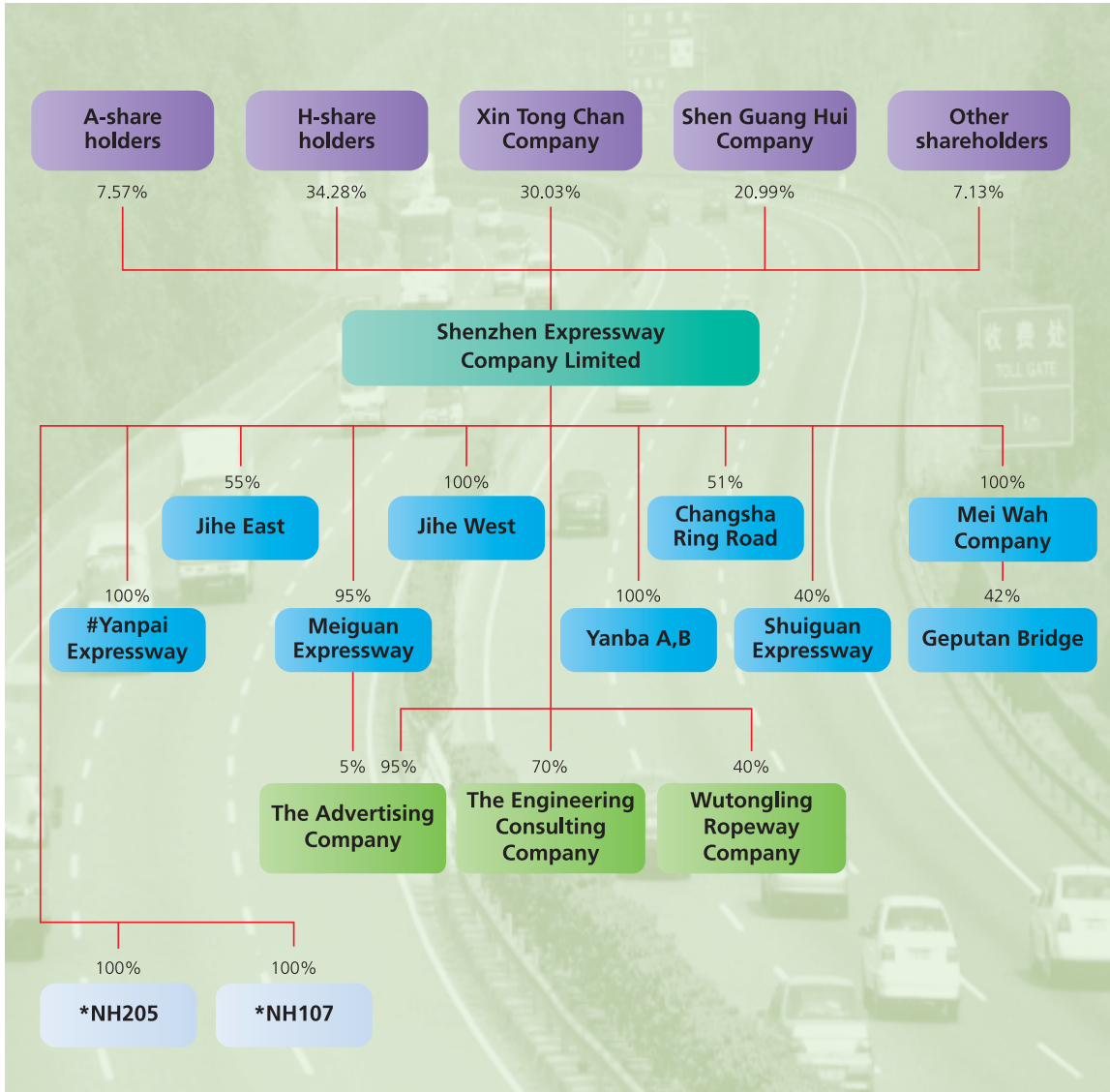
Shenzhen Expressway Company Limited is principally engaged in the construction, operation and management of toll highways and expressways in the PRC. It was granted the concession rights to operate its existing expressways, and a right of first refusal to develop and operate new expressways in Shenzhen. The Company focuses on developing toll roads in Shenzhen, investing and operating road projects, managing and constructing highways and roads in Pearl River Delta and other regions of the PRC. It is committed to supplying high quality and efficient services to the public and the government at reasonable costs. The toll roads in Shenzhen operated by the Company have already formed a complete road network, which not only connects the main ports, the airport, customs checkpoints and industrial zones in Shenzhen, but also forms the main component of the national and provincial road networks. This road network constitutes the major gateway between Shenzhen and Hong Kong and serves as the main passage to the Pearl River Delta. Therefore, it plays a very important role in Shenzhen's ground transportation.

The Company was established on 30th December 1996 with the total share capital of RMB1,268,200,000. In March 1997, the Company issued 747,500,000 foreign shares (H Shares), which were listed on HKEX on 12th March 1997 (code: 0548). It issued 165,000,000 Renminbi-denominated ordinary shares (A Shares) in December 2001, which were listed on the Shanghai Stock Exchange on 25th December 2001 (code: 600548). The total share capital of the Company at present is RMB2,180,700,000. The controlling shareholder of the Company is Shenzhen International Holdings Limited (HKEX stock code: 0152), holding approximately 30.03% of the existing issued share capital of the Company through its wholly-owned subsidiary, Xin Tong Chan Development (Shenzhen) Co. Ltd.



# Company Profile

## The shareholding and asset structure of the Company



Note: # Under construction

\* The Company entered into an agreement with the Shenzhen Communications Bureau on 18th March 2003, pursuant to which the Company transferred NH107 and NH205 to the Shenzhen Municipal Government.