

# DIRECTORS AND MANAGEMENT

## BOARD OF DIRECTORS



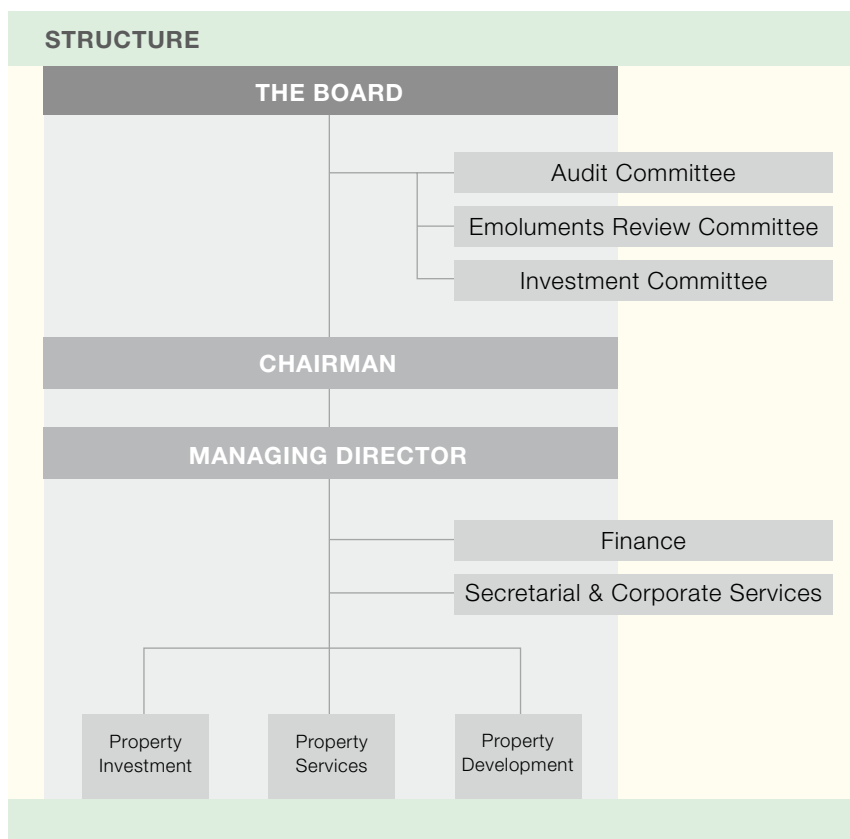
**Peter Ting Chang LEE** (I)  
J.P.  
**Chairman**

Peter T. C. Lee first joined the Board in 1988, became Managing Director in 1999, and Chairman in 2001. A non-executive director of Cathay Pacific Airways Limited, Hang Seng Bank Limited, SCMP Group Limited, Maersk (China) Shipping Company Limited, and a director of a number of other companies. A vice president of the Real Estate Developers Association of Hong Kong. Also a director of Lee Hysan Estate Company, Limited. Received a Bachelor of Science Degree in Civil Engineering from the University of Manchester, he also qualified as a Solicitor of the Supreme Court of England and Wales. He is aged 50.



**Sir David AKERS-JONES** (A, E)  
G.B.M., K.B.E., C.M.G., J.P.  
**Independent non-executive Deputy Chairman**

Chairman of GAM Hong Kong Limited. Deputy Chairman of CNT Group Limited and a non-executive director of various other companies. He is also a chairman and member of various voluntary organisations. Received his Master of Arts Degree at Oxford University. He was formerly the Chief Secretary of Hong Kong. Appointed a Director in 1989 and became the Deputy Chairman in 2001. He is aged 76.



### CHAIRMAN

Peter Ting Chang LEE J.P. (I)

### INDEPENDENT NON-EXECUTIVE DEPUTY CHAIRMAN

Sir David AKERS-JONES  
G.B.M., K.B.E., C.M.G., J.P.  
(chairing A, E)

### MANAGING DIRECTOR

Michael Tze Hau LEE (I)

### INDEPENDENT NON-EXECUTIVE DIRECTORS

Per JORGENSEN (A)  
Dr. Geoffrey Meou-tsen YEH (E)  
S.B.S., M.B.E., J.P., D.C.S., M.Sc.,  
F.C.I.O.B., F.Inst. D.

### NON-EXECUTIVE DIRECTORS

Fa-kuang HU (E)  
G.B.S., C.B.E., J.P.  
Hans Michael JEBSEN B.B.S. (I)  
Anthony Hsien Pin LEE (I)  
Chien LEE (A)  
Dr. Deanna Ruth Tak Yung RUDGARD

### DIRECTOR, PROPERTY

Pauline Wah Ling YU WONG

### CHIEF FINANCIAL OFFICER

Ricky Tin For TSANG

### COMPANY SECRETARY

Wendy Wen Yee YUNG

- (A) Audit Committee  
(E) Emoluments Review Committee  
(I) Investment Committee



**Michael Tze Hau LEE** (I)  
*Managing Director*

Michael T. H. Lee first joined the Board in 1990, became Chief Operating Officer in 2002, and Managing Director in 2003. A non-executive director of Tai Ping Carpets International Limited. President of the Executive Committee of Hong Kong Society for Protection of Children and Vice-Chairman of Helping Hand. Also a director of Lee Hysan Estate Company, Limited. Received his Bachelor of Arts Degree from Bowdoin College and a Master of Business Administration Degree from Boston University. He is aged 42.



**Fa-kuang HU** (E)  
G.B.S., C.B.E., J.P.  
*Non-executive Director*

Chairman Emeritus of Ryoden (Holdings) Limited. Also a director of i-CABLE Communications Limited. Holds a Bachelor of Science Degree from Shanghai Jiao Tong University. Appointed a Director in 1979 and is aged 80.



**Hans Michael JEBSEN** (I)  
B.B.S.  
*Non-executive Director*

Chairman of Jebesen and Company Limited as well as a director of other Jebesen Group companies worldwide. Also a director of The Wharf (Holdings) Limited. Appointed a Director in 1994 and is aged 47.



**Per JORGENSEN** (A)  
*Independent non-executive Director*

A director of A.P. Moller - Maersk A/S, Denmark and a number of A.P. Moller-Maersk companies in Asia, Africa and Europe. Appointed a Director in 1981 and is aged 68.



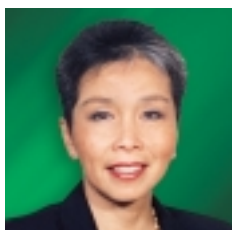
**Anthony Hsien Pin LEE** (I)  
*Non-executive Director*

A director and substantial shareholder of the Australian-listed Beyond International Limited, principally engaged in television programme production and international sales of television programmes and feature films. Received a Bachelor of Arts Degree from Princeton University and a Master of Business Administration Degree from The Chinese University of Hong Kong. Also a director of Lee Hysan Estate Company, Limited. Appointed a Director in 1994 and is aged 46.



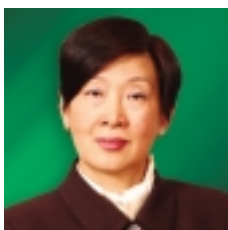
**Chien LEE** (A)  
*Non-executive Director*

A director of Scottish and Eastern Investments Limited, Lee Gardens International Holdings Limited and a number of other companies. Non-executive director of Swire Pacific Limited. Also a director of Lee Hysan Estate Company, Limited. Received a Bachelor of Science Degree in Mathematical Science, a Master of Science Degree in Operations Research and a Master of Business Administration Degree from Stanford University. Appointed a Director in 1988 and is aged 50.



**Dr. Deanna Ruth Tak Yung RUDGARD**  
*Non-executive Director*

Received a Master of Arts Degree, Bachelor of Medicine and of Surgery Degree from Oxford University. Also a director of Lee Hysan Estate Company, Limited. Appointed a Director in 1993 and is aged 64.



**Pauline Wah Ling YU WONG**  
*Director, Property*

Responsible for the Group's property portfolio. Having obtained a Bachelor of Arts Degree from The University of Hong Kong, she qualified as a Fellow Member of the Chartered Institute of Housing. She joined the Company in 1981 and has over thirty years of experience in the property field. Appointed a Director in 1991 and is aged 55.



**Dr. Geoffrey Meou-tsen YEH** (E)  
S.B.S., M.B.E., J.P., D.C.S., M.Sc., F.C.I.O.B., F.Inst. D.  
*Independent non-executive Director*

Former Chairman of Hsin Chong Construction Group Ltd. Holds a Bachelor degree of Science from University of Illinois and a Master degree of Science from Harvard University. Appointed a Director in 1979. He is aged 72.



Left to right:  
Ben S.S. Lui, Mark S.W. Chim, Wendy W.Y. Yung, Ricky T.F. Tsang, Michael T.H. Lee, Peter T.C. Lee, Pauline W.L. Yu Wong, Alex C.W. Lui, Lora W.S. Luke, Deric Probst-Wallace

## CHIEF FINANCIAL OFFICER

### Ricky Tin For TSANG

Responsible for Group finance. He holds a Master of Arts Degree from Oxford University, also qualified as a Chartered Accountant with the Institute of Chartered Accountants of England and Wales, and is a member of the Association of Corporate Treasurers. Prior to joining the Group in 2004, he had held senior business and finance positions with leading financial institutions in Hong Kong and UK. He has extensive experience in a wide range of finance activities including risk management, treasury and financial control. He is aged 42.

## COMPANY SECRETARY

### Wendy Wen Yee YUNG

Responsible for Group corporate services including legal, company secretarial, human resources, corporate communications and administration. She holds a Master of Arts Degree from Oxford University and is a solicitor of the High Court of the HKSAR. Prior to joining the Group in 1999, she was a partner of an international law firm in Hong Kong. She is aged 42.

## SENIOR MANAGEMENT

### Alex Chun Wan LUI

*Senior Advisor, Urban Design and Architectural Services*  
Responsible for the Group's urban design and architectural services. A Registered Architect and an Authorized Person (Architect). Also a member of the Town Planning Board. He holds a Master Degree in City Planning from the Massachusetts Institute of Technology and a Bachelor of Architecture Degree from the University of Hong Kong. Before joining the Group in 2002, he was Professor in Architecture of the Chinese University of Hong Kong and has practised architecture & urban design for almost thirty years in Hong Kong, Singapore and USA. He is aged 60.

### Mark Sun Wa CHIM

*General Manager, Office Leasing*  
Responsible for the Group's office leasing activities. He holds a MBA Degree from Heriot-Watt University. Before joining the Group in 1999, he was National Director, Commercial Department, of an international real estate consultancy firm with over fifteen years' experience in leasing. He is aged 40.

### Ben Sau Shun LUI

*General Manager, Project and Technical Services*  
Responsible for the Group's project and technical services. A Registered Professional Engineer and a Chartered Civil and Structural Engineer, he holds a Master of Science Degree in Construction Project Management and a Bachelor of Science Degree in Civil Engineering, both from

the University of Hong Kong. Before joining the Group in 2000, he has served senior project management positions in other major listed companies. He is aged 45.

### Lora Wing Sze LUKE

*General Manager, Retail Leasing*

Responsible for the Group's retail leasing activities. She holds a MBA Degree from University of Reading in Real Estate and Construction. Prior to joining the Group in 2000, she was senior leasing manager of a major listed property investment company. She is aged 43.

### Deric PROBST-WALLACE

*General Manager, Property Services*

Responsible for the Group's property services. He holds a MBA degree from the Cranfield School of Management, a diploma from the Chartered Institute of Marketing and a Bachelor of Science Degree from the University of Stirling. Before joining the Group in 2002, he was a Director of an international property services and construction-related consulting firm. He is aged 41.

### Hoi Yee YAU

*Head of Corporate Planning*

Heads the Group's Corporate Planning Department, Finance Division. She holds a MBA Degree from Harvard University and a Bachelor of Science Degree from Stanford University. Prior to joining the Group in 2002, she has served senior management positions in investment and consulting companies. She is aged 35.