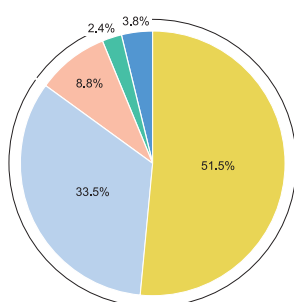


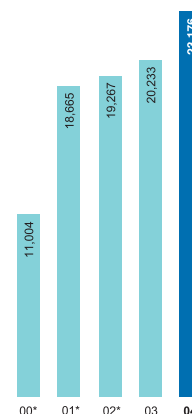
# FINANCIAL HIGHLIGHTS



	2004	2003	Increase / (Decrease)
	HK\$m	HK\$m	
<b>Operating Results</b>			
Turnover	23,176	20,233	14.5%
EBITDA	1,125	1,175	(4.3%)
Profit attributable to shareholders	1,053	1,017	3.5%
Earnings per share – fully diluted (HK cents)	13.99	13.54	3.3%
<b>Financial Position</b>			
Total assets	8,342	6,756	23.5%
Cash and cash equivalents	2,650	2,808	(5.6%)
Shareholders' fund	4,489	4,189	7.2%
<b>Financial Ratio</b>			
ROA (Return on assets) (%)	14.4	14.5	(0.7%)
ROE (Return on equity) (%)	24.7	25.6	(3.5%)
Current ratio (times)	1.9	2.1	(9.5%)
<b>Others</b>			
Interim dividend (HK cents)	2.0	1.8	11.1%
Proposed final dividend (HK cents)	3.0	3.0	–
Special dividend (HK cents)	–	5.2	N/A

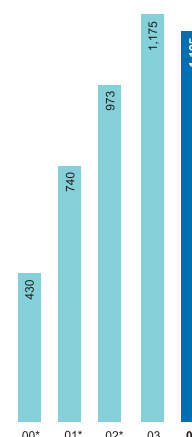


Turnover Analysis by Business Segment



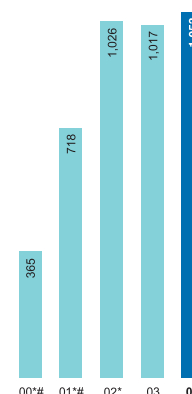
Turnover for the year ended 31st March (HK\$m)

\* Proforma



EBITDA for the year ended 31st March (HK\$m)

\* Proforma



Profit Attributable to Shareholders for the year ended 31st March (HK\$m)

\* Proforma  
# Before restatement of amortisation of intangible assets