

The logo for Automated Systems Holdings Limited, featuring the word "AUTOMATED" in a bold, blue, sans-serif font with horizontal lines through the letters, set against a white background with a blue border.

Automated Systems Holdings Limited

自動系統集團有限公司

(Incorporated in Bermuda with Limited Liability)

(在百慕達註冊成立之有限公司)



ANNUAL REPORT 2004 年報



Quality Policy for ASL

We are committed to Customer Service Excellence. It is a never ending journey in ASL for quality and service improvement. We are dedicated to provide competitive, effective and efficient IT solutions to our customers and business partners.

Our quality objectives are:

To maintain high level of operational efficiency to serve our customers.

To achieve customer satisfaction excellence in providing IT services.

自動系統的優質承諾

我們謹對客戶作出高質素的服務承諾，為追求卓越品質及完善服務作出不斷的改進，並致力向客戶及業務夥伴提供富有競爭力、效率高而有效的資訊科技方案。

自動系統的服務宗旨：

保持高水準的營運效率，為客戶提供最滿意的專業資訊科技服務。

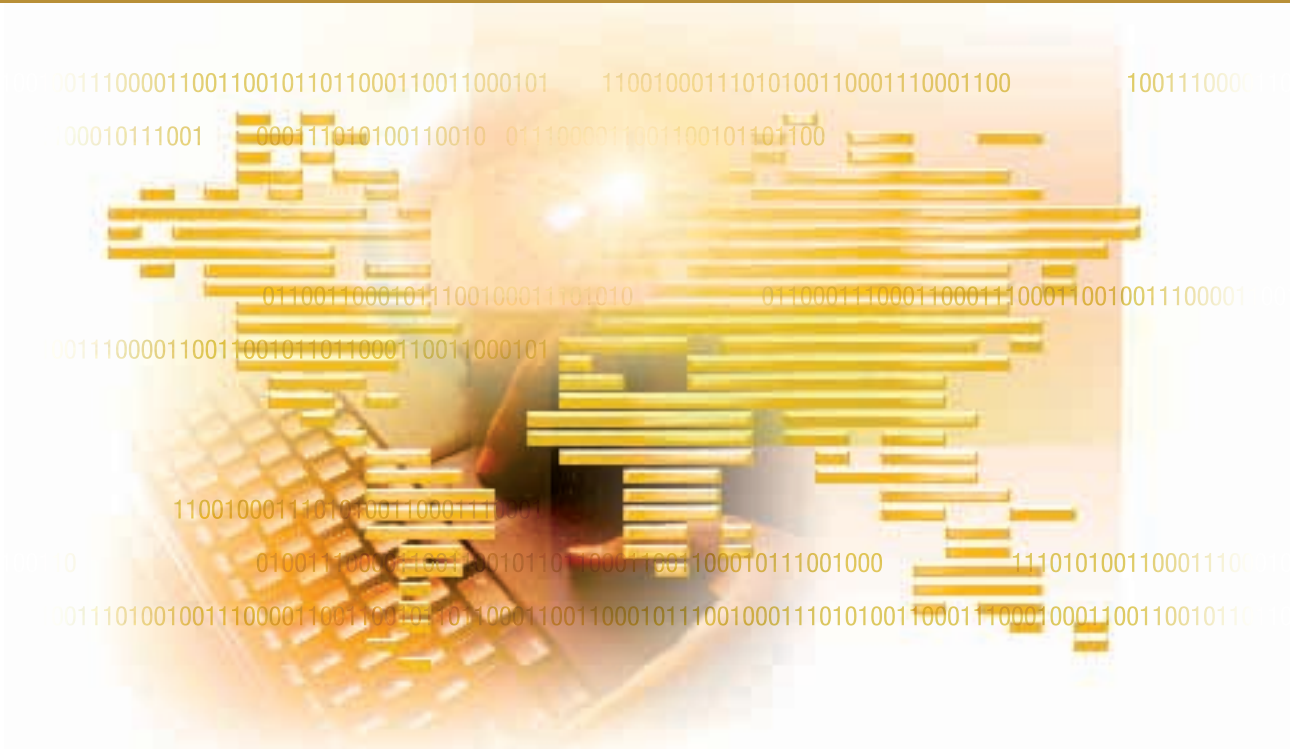
Automated Systems (HK) Ltd.



Certificates applicable to (a) Hardware Maintenance (b) Software Installation Service (c) Customer Service Response Centre Operation (d) Technical Upgrade & Installation (e) Network Design & Technical Support Services for Computer Systems

Certificates applicable to Integrated Information Technology Services: (a) Software Design, Development and Application Maintenance (b) Project Management, Technical Training and Outsourcing of Information Technology Personnel (c) System and Network Consultancy and Support

目錄 Contents



2	公司資料	Corporate Information
3	財務摘要	Financial Summary
5	主席報告	Chairman's Statement
7	董事總經理報告	Managing Director's Statement
12	花絮回顧	Episodes of the Year
14	於年內所獲之重要合約	Major Contracts Secured in the Year
16	公司管治	Corporate Governance
17	董事簡介	Profile of Directors
20	董事會報告	Directors' Report
32	核數師報告	Auditors' Report
34	綜合損益賬	Consolidated Income Statement
35	綜合資產負債表	Consolidated Balance Sheet
37	資產負債表	Balance Sheet
38	綜合權益變動表	Consolidated Statement of Changes in Equity
40	綜合現金流量表	Consolidated Cash Flow Statement
42	財務報表附註	Notes to the Financial Statements