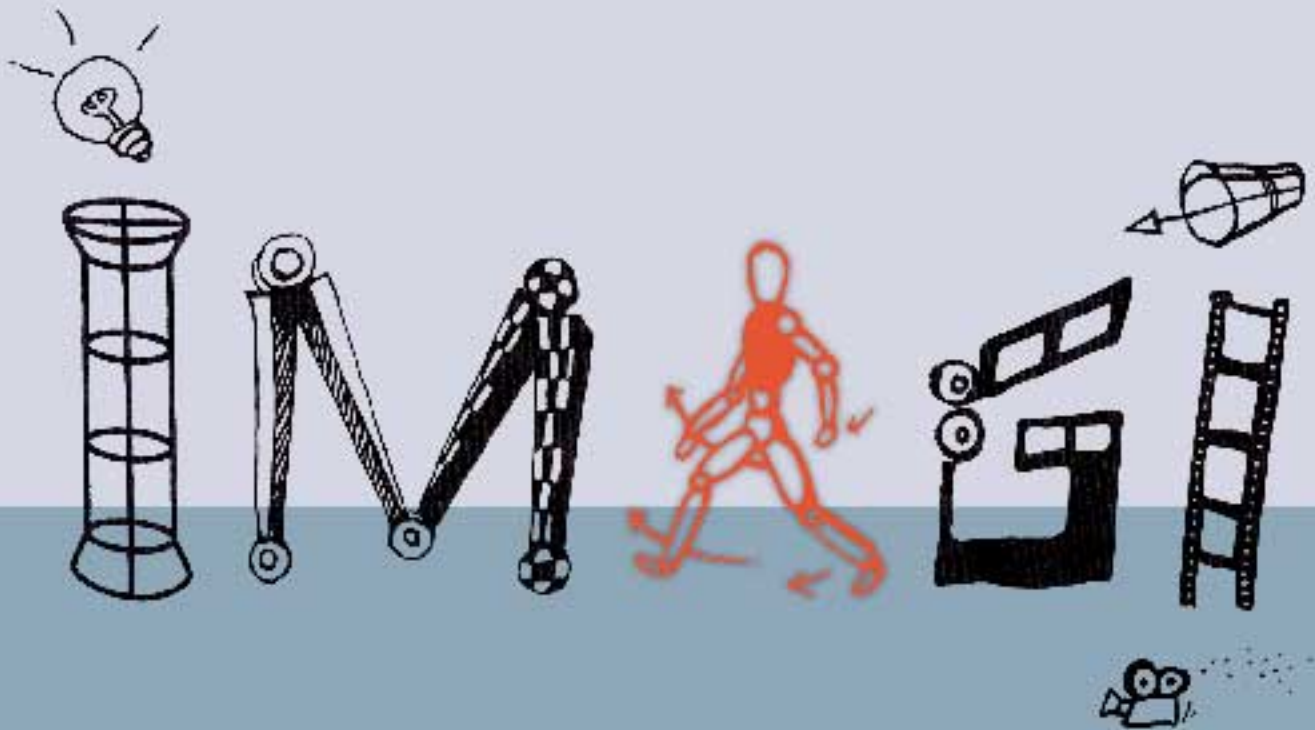




IMAGI INTERNATIONAL HOLDINGS LIMITED  
意馬國際控股有限公司\*



A N N U A L   R E P O R T   2 0 0 3 / 2 0 0 4

# TVMA



# CONTENTS



2	Corporate Information
3	Corporate Mission and Company Profile
4	Chairman's Statement
6	Management Discussion and Analysis
11	Directors' Profile
13	Senior Management's Profile
16	Directors' Report
23	Auditors' Report
24	Consolidated Income Statement
25	Consolidated Balance Sheet
27	Balance Sheet
28	Consolidated Statement of Changes in Equity
29	Consolidated Cash Flow Statement
31	Notes to the Financial Statements
72	Financial Summary