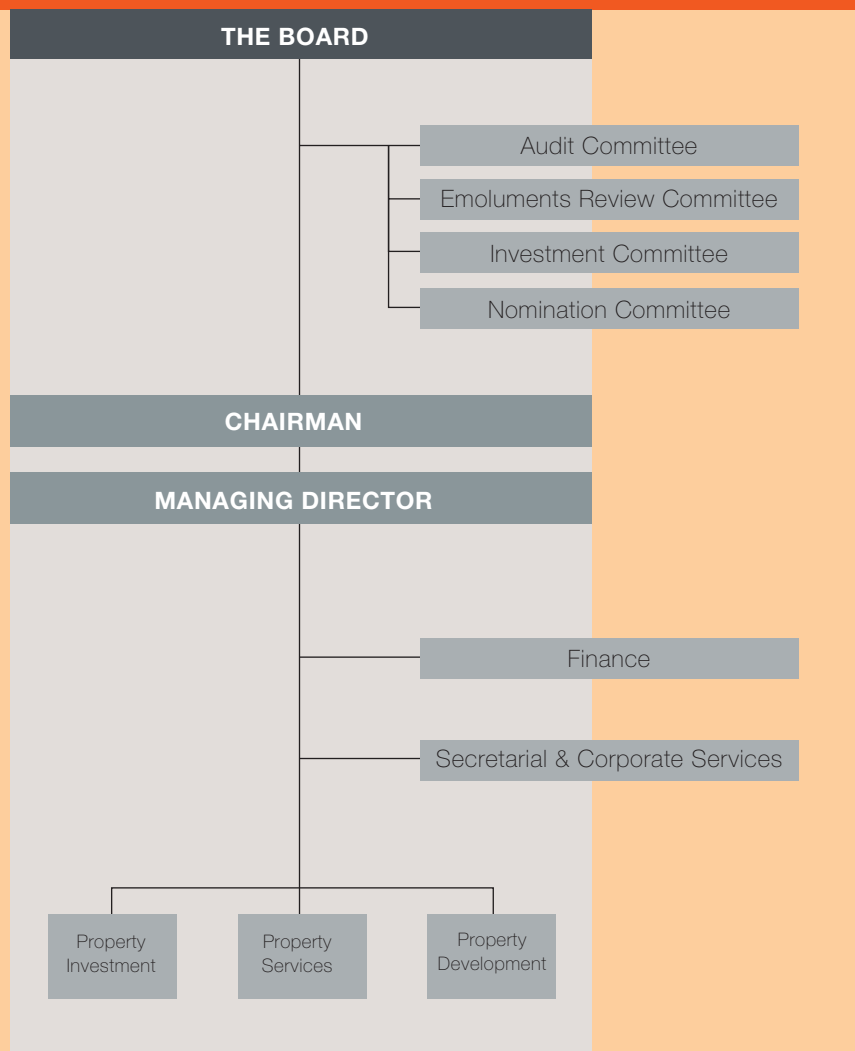


# Sound Management

## Board of Directors and Senior Management

### Structure



#### CHAIRMAN

Peter Ting Chang LEE *(I, chairing N)*  
J.P.

#### INDEPENDENT NON-EXECUTIVE DEPUTY CHAIRMAN

Sir David AKERS-JONES  
*(N, chairing A,E)*  
G.B.M., K.B.E., C.M.G., J.P.

#### MANAGING DIRECTOR

Michael Tze Hau LEE *(I)*

#### INDEPENDENT NON-EXECUTIVE DIRECTORS

Per JORGENSEN *(A)*  
Dr. Geoffrey Meou-tsen YEH *(E,N)*  
S.B.S., M.B.E., J.P., D.C.S., M.Sc.,  
F.C.I.O.B., F.Inst. D.

#### NON-EXECUTIVE DIRECTORS

Fa-kuang HU *(E)*  
G.B.S., C.B.E., J.P.  
Hans Michael JEBSEN *(I)*  
B.B.S.  
Anthony Hsien Pin LEE *(chairing I)*  
Chien LEE *(A)*  
Dr. Deanna Ruth Tak Yung RUDGARD

#### DIRECTOR, PROPERTY

Pauline Wah Ling YU WONG

#### CHIEF FINANCIAL OFFICER

Ricky Tin For TSANG

#### COMPANY SECRETARY

Wendy Wen Yee YUNG

- (A) Audit Committee
- (E) Emoluments Review Committee
- (I) Investment Committee
- (N) Nomination Committee

## BOARD OF DIRECTORS



**Peter Ting Chang LEE**

J.P.

*Chairman (I, chairing N)*

Peter T. C. Lee joined the Board in 1988, became Managing Director in 1999, and Chairman in 2001. Mr. Lee is a non-executive director of Cathay Pacific Airways Limited, Hang Seng Bank Limited, SCMP Group Limited, Maersk (China) Shipping Company Limited, and a director of a number of other companies. He is also vice president of the Real Estate Developers Association of Hong Kong. He is a member of the founding Lee family and a director of Lee Hysan Estate Company, Limited. Mr. Lee holds a Bachelor of Science Degree in Civil Engineering from the University of Manchester and is also qualified as a Solicitor of the Supreme Court of England and Wales. He is aged 51.



**Sir David AKERS-JONES**

G.B.M., K.B.E., C.M.G., J.P.

*Independent non-executive Deputy Chairman (N, chairing A, E)*

Sir David is Chairman of GAM Hong Kong Limited, Deputy Chairman of CNT Group Limited and a non-executive director of various other companies. He is also a chairman and member of various voluntary organisations. He received his Master of Arts Degree at Oxford University. He was formerly the Chief Secretary of Hong Kong. He was appointed a Director in 1989 and became the Deputy Chairman in 2001. He is aged 77.



**Michael Tze Hau LEE**

*Managing Director (I)*

Michael T. H. Lee joined the Board in 1990, became Chief Operating Officer in 2002, and Managing Director in 2003. Mr. Lee is a member of the Main Board Listing Committee of The Stock Exchange of Hong Kong Limited, a non-executive director of Tai Ping Carpets International Limited, and a member of the Executive Committee of Hong Kong Housing Society. He is President of Hong Kong Society for the Protection of Children and Vice Chairman of Helping Hand. He is a member of the founding Lee family and a director of Lee Hysan Estate Company, Limited. Mr. Lee received his Bachelor of Arts Degree from Bowdoin College and Master of Business Administration Degree from Boston University. He is aged 43.



**Fa-kuang HU**

G.B.S., C.B.E., J.P.

*Non-executive Director (E)*

Mr. Hu is Senior Advisor of Mitsubishi Electric Hong Kong Group Limited (formerly "Ryoden (Holdings) Limited"). He is also a director of i-CABLE Communications Limited. Mr. Hu holds a Bachelor of Science Degree from Shanghai Jiao Tong University; appointed a Director in 1979 and is aged 81.



**Hans Michael JEBSEN**

B.B.S.

*Non-executive Director (I)*

Mr. Jepsen is Chairman of Jepsen and Company Limited as well as a director of other Jepsen Group companies worldwide. He is also a director of The Wharf (Holdings) Limited. He was appointed a Director in 1994 and is aged 48.



**Per JORGENSEN**  
*Independent non-executive Director (A)*

Mr. Jorgensen is a director of A.P. Moller - Maersk A/S, Denmark and a number of A.P. Moller-Maersk companies in Asia, Africa and Europe. He was appointed a Director in 1981 and is aged 69.



**Anthony Hsien Pin LEE**  
*Non-executive Director (chairing I)*

Mr. Lee is a director and substantial shareholder of the Australian-listed Beyond International Limited, principally engaged in television programme production and international sales of television programmes and feature films. He is also a director of Australian-listed Mariner Financial Limited, a Sydney based financial services group. He received a Bachelor of Arts Degree from Princeton University and a Master of Business Administration Degree from The Chinese University of Hong Kong. Mr. Lee is a member of the founding Lee family and a director of Lee Hysan Estate Company, Limited. He was appointed a Director in 1994 and is aged 47.



**Chien LEE**  
*Non-executive Director (A)*

Mr. Lee is a private investor and a director of a number of companies including Swire Pacific Limited of which he is a non-executive director. He is a member of the founding Lee family and a director of Lee Hysan Estate Company, Limited. Mr. Lee received a Bachelor of Science Degree in Mathematical Science, a Master of Science Degree in Operations Research and a Master of Business Administration Degree from Stanford University. Mr. Lee was appointed a Director in 1988 and is aged 51.



**Dr. Deanna Ruth Tak Yung RUDGARD**  
*Non-executive Director*

Dr. Rudgard received a Master of Arts Degree, Bachelor of Medicine and of Surgery Degree from Oxford University. She is a member of the founding Lee family and a director of Lee Hysan Estate Company, Limited. She was appointed a Director in 1993 and is aged 65.



**Pauline Wah Ling YU WONG**  
*Director, Property*

Responsible for the Group's property portfolio. Having obtained a Bachelor of Arts Degree from The University of Hong Kong, she qualified as a Fellow Member of the Chartered Institute of Housing. She joined the Company in 1981 and has over 30 years of experience in the property field. She was appointed a Director in 1991 and is aged 56.



**Dr. Geoffrey Meou-tsen YEH**  
S.B.S., M.B.E., J.P., D.C.S., M.Sc., F.C.I.O.B., F.Inst.D.  
*Independent non-executive Director (E, N)*

Dr. Yeh is former Chairman of Hsin Chong Construction Group Ltd. He is currently an independent non-executive director of China Travel International Investment Hong Kong Limited. He holds a Bachelor of Science Degree from University of Illinois and a Master of Science Degree from Harvard University. Dr. Yeh was appointed a Director in 1979. He is aged 73.



From left:  
Ben S.S. Lui, Mark S.W. Chim, Wendy W.Y. Yung, Ricky T.F. Tsang, Michael T.H. Lee, Peter T.C. Lee, Pauline W.L. Yu Wong, Alex C.W. Lui, Lora W.S. Luke, Deric Probst-Wallace, Vincent W.K. Chang

## SENIOR MANAGEMENT

### **Ricky Tin For TSANG** *Chief Financial Officer*

Mr. Tsang is responsible for Group finance. He holds a Master Degree in Engineering from Oxford University, and is qualified as a Chartered Accountant with the Institute of Chartered Accountants of England and Wales. Mr. Tsang is also a member of the Association of Corporate Treasurers in the United Kingdom. Prior to joining the Group in 2004, he had held senior business and finance positions with leading financial institutions in Hong Kong and the United Kingdom. He has extensive experience in management and finance including risk management, treasury and financial control. He is aged 43.

### **Wendy Wen Yee YUNG** *Company Secretary*

Ms. Yung is responsible for Group corporate services including legal, company secretarial, human resources, corporate communications and administration. She sits on the Hong Kong Selection Committee of the Rhodes Scholarships which support postgraduate studies at Oxford University. She holds a Master of Arts Degree from Oxford University and is a solicitor of the High Court of the HKSAR. Prior to joining the Group in 1999, she was a partner of an international law firm in Hong Kong. She is aged 43.

### **Alex Chun Wan LUI** *Senior Advisor, Urban Design and Architectural Services*

Mr. Lui is responsible for the Group's urban design and architectural services. He is a Registered Architect and an Authorised Person (Architect), and a member of the Town Planning Board. He holds a Master Degree in City Planning from the Massachusetts Institute of Technology and a Bachelor of Architecture Degree from the University of Hong Kong. Before joining the Group in 2002, he was Professor in Architecture of the Chinese University of Hong Kong and has practised architecture and urban design for almost 30 years in Hong Kong, Singapore and USA. He is aged 61.

### **Mark Sun Wa CHIM** *General Manager, Office Leasing*

Mr. Chim is responsible for the Group's office leasing activities. He graduated from The Hong Kong Polytechnic University in Building Technology and Management and holds an MBA Degree from Heriot-Watt University. Before joining the Group in 1999, he was National Director, Commercial Department, of an international real estate consultancy firm and has over 16 years of experience in leasing. He is aged 41.

### **Ben Sau Shun LUI** *General Manager, Project and Technical Services*

Mr. Lui is responsible for the Group's project and technical services. He is a Chartered Civil Engineer and Registered Structural Engineer, and holds a Bachelor of Science Degree in Civil Engineering and a Master of Science Degree in Construction Project Management, both from the University of Hong Kong. Before joining the Group in 2000, he has served senior project management positions in other major listed companies. He is aged 46.

### **Lora Wing Sze LUKE** *General Manager, Retail*

Ms. Luke is responsible for the Group's retail leasing and marketing activities. She holds an MBA Degree from University of Reading in Real Estate and Construction. Prior to joining the Group in 2000, she was senior leasing manager of a major listed property investment company. She is aged 44.

### **Deric PROBST-WALLACE** *General Manager, Property Services*

Mr. Probst-Wallace is responsible for the Group's property services. He holds a Diploma from the Chartered Institute of Marketing, a Bachelor of Science Degree from the University of Stirling and an MBA Degree from the Cranfield School of Management. He is a Director of the Hong Kong Chapter of the International Facility Management Association and guest lecturer at The Hong Kong Polytechnic University. Before joining the Group in 2002, he was director of an international property services and construction-related consulting firm. He is aged 42.

### **Vincent Wai Kwan CHANG** *Group Financial Controller*

Mr. Chang is responsible for Group financial and reporting affairs. He holds an MBA Degree from the Chinese University of Hong Kong, and is a member of the Association of Chartered Certified Accountants and the Hong Kong Institute of Certified Public Accountants. Prior to joining the Group in 2004, he was a director in the Asia Regional Office of a leading international real estate investment and management company. He had held Asia regional investment advisory and financial management position with leading international financial institutions and investment houses. He is aged 36.