

# Financial Highlights

## Financial Summary \*

(in RMB '000)

Year ended 31 December	Consolidated		Combined		
	2004	2003	2002	2001	2000
Turnover	<b>1,629,332</b>	1,920,522	2,283,672	1,339,638	1,469,165
Gross profit	<b>429,801</b>	510,370	508,972	330,165	370,201
Operating profits	<b>439,256</b>	473,383	442,342	318,845	293,894
Profit attributable to shareholders	<b>283,197</b>	255,351	218,069	169,509	78,603
Basic earnings per share	<b>RMB0.1755</b>	RMB0.1854	RMB0.1982	RMB0.1541	RMB0.0715

(in RMB '000)

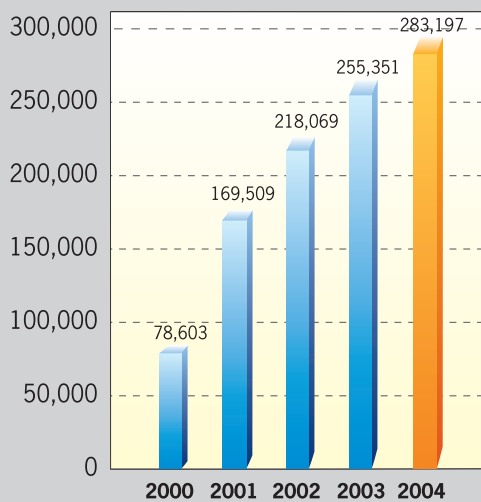
As at 31 December	Consolidated		Combined		
	2004	2003	2002	2001	2000
Total assets	<b>8,813,316</b>	7,833,412	5,463,876	3,993,100	2,592,771
Total liabilities and minority interests	<b>6,499,164</b>	5,652,304	4,724,958	3,294,756	2,408,037

\* Note: The above table summarises the results, assets and liabilities of the Group. The figures for the financial years from 2000 to 2002 are presented on a combined basis as if the current group structure had been in existence before the listing of the Company.

## Financial Highlights

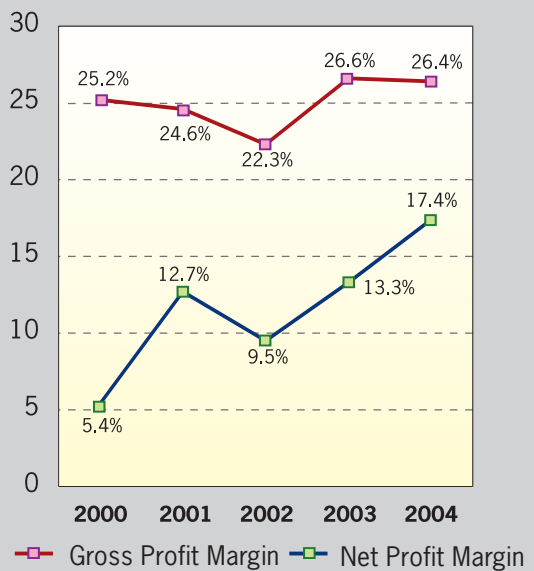
### Profit Attributable to Shareholders

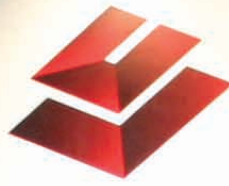
(RMB '000)



### Gross and Net Profit Margins

(%)





首创置业  
BEIJING CAPITAL LAND  
综合地产营运商

首创置业综合地产营运商  
香港上市公司(H2868)

www.bjcapita

