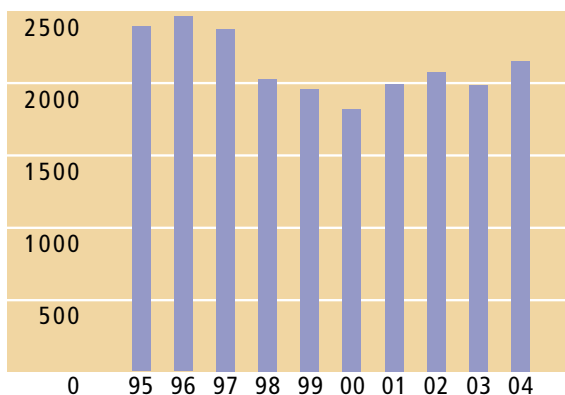


# TEN YEAR FINANCIAL SUMMARY | 十年財務概要

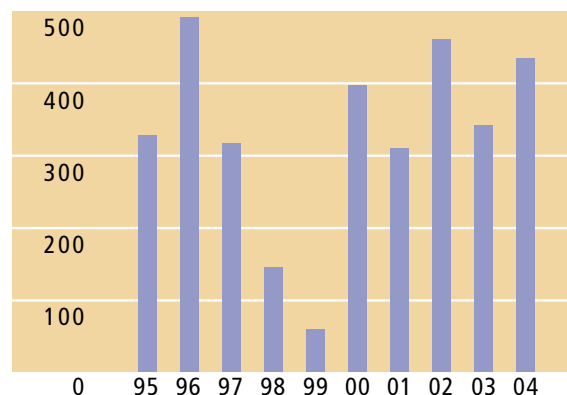
	2004	2003	2002	2001	2000
<i>(in HK\$ Million)</i>					
Turnover	<b>2,153</b>	1,987	2,078	1,994	1,821
Net operating profit	<b>219</b>	104	276	127	262
Share of after tax results of jointly controlled companies	<b>256</b>	263	227	197	134
Profit attributable to shareholders	<b>438</b>	345	465	312	400
Dividends	<b>181</b>	306	539	108	106
Funds employed:					
Fixed assets	<b>2,300</b>	1,513	1,597	1,636	1,708
Other assets	<b>1,897</b>	1,923	2,083	1,549	1,229
	<b>4,197</b>	3,436	3,680	3,185	2,937
Less: current liabilities	<b>497</b>	348	394	360	313
	<b>3,700</b>	3,088	3,286	2,825	2,624
Financed by:					
Shareholders' equity	<b>3,109</b>	2,983	3,177	2,713	2,509
Minority interests	<b>495</b>	5	5	5	5
Long term loan	<b>96</b>	100	104	107	110
	<b>3,700</b>	3,088	3,286	2,825	2,624
<i>(in HK\$)</i>					
Earnings per share	<b>2.63</b>	2.07	2.80	1.87	2.40
Dividends per share	<b>1.09</b>	0.84	0.74	0.65	0.61
Special dividend per share	<b>–</b>	1.00	2.50	–	–
Shareholders' equity per share	<b>18.69</b>	17.93	19.10	16.30	15.02
Dividend cover – times	<b>2.42</b>	2.46	3.78	2.88	3.79

Turnover  
營業總額



(Total HK\$M 總計港幣百萬元)

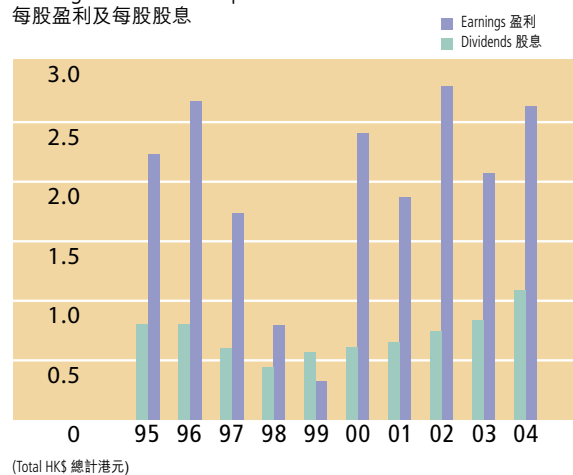
Profit attributable to shareholders  
股東應佔溢利



(Total HK\$M 總計港幣百萬元)

1999	1998	1997	1996	1995	
					(港幣百萬元)
1,959	2,028	2,375	2,462	2,391	營業總額
–	117	323	573	397	營業淨溢利
61	43	40	(6)	8	應佔共控公司除稅後業績
59	146	320	495	331	股東應佔溢利
81	111	148	148	148	股息
					資金運用:
1,773	1,895	1,057	401	324	固定資產
1,137	1,426	1,940	2,428	2,068	其他資產
2,910	3,321	2,997	2,829	2,392	
288	659	455	455	364	減: 流動負債
2,622	2,662	2,542	2,374	2,028	
					資本來源:
2,504	2,541	2,537	2,369	2,023	股東股權
5	5	5	5	5	少數股東權益
113	116	–	–	–	長期借款
2,622	2,662	2,542	2,374	2,028	
					(港元)
0.32	0.79	1.73	2.67	2.23	每股盈利
0.57	0.44	0.60	0.80	0.80	每股股息
–	–	–	–	–	每股特別股息
13.53	13.72	13.70	12.79	10.93	每股股東股權
					盈利對股息比率倍數
0.73	1.31	2.16	3.34	2.24	

Earnings and dividends per share  
每股盈利及每股股息



Shareholders' equity per share  
每股股東股權

