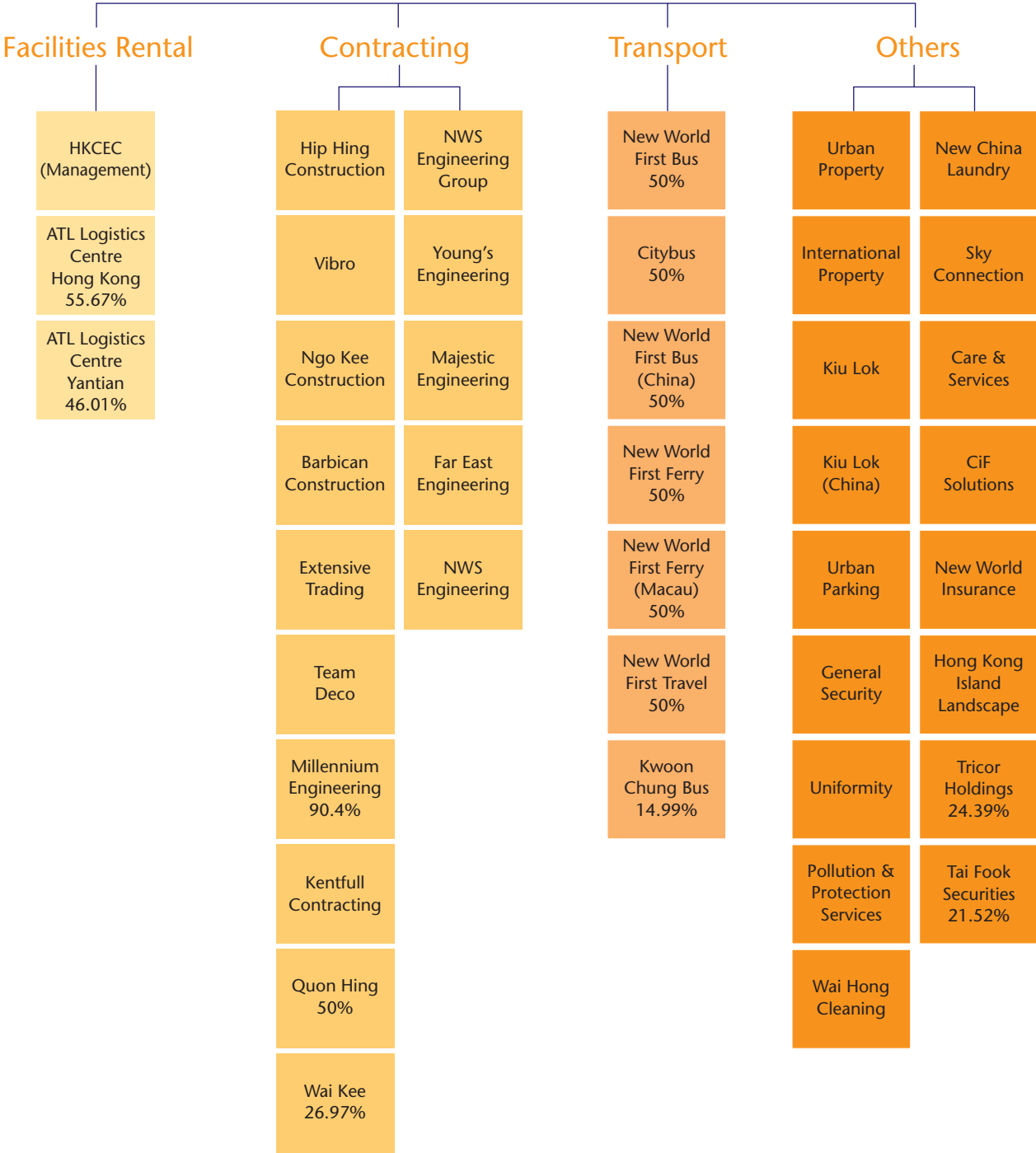


Project Key Facts and Figures

Service & Rental



Facilities Rental

ATL Logistics Centre Hong Kong Limited

Attributable Interest	55.67%		
Form of Investment	Equity		
Lettable Area	5.9 million sq ft		
Location	Berth 3, Kwai Chung Container Terminals, Hong Kong		
Operation Dates	Phase I:	February 1987	
	Phase II:	March 1988	
	Phase III:	February 1992	
	Phase IV:	January 1994	
	Phase V:	November 1994	
Expiry Date	2047		
Yearly Average	2005	2004	2003
Occupancy Rate	92.8%	90.8%	95.4%
CFS handling volume (cbm)	1,052,000	1,257,000	1,302,000

ATL Logistics Centre Yantian Limited

Attributable Interest	46%		
Form of Investment	Equity		
Handling Capacity	600,000 cbm pa		
Total Area	26,000 sq m		
Location	Yantian, Shenzhen		
Operation Date	January 2002		
Expiry Date	2019		
CFS handling volume (cbm)	2005	2004	2003
	305,000	352,000	396,000

Hong Kong Convention and Exhibition Centre (Management) Limited

Services Offered	Provision of venues for exhibitions, conventions, meetings, entertainment and special events, and catering, etc
Gross Rentable Space	64,000 sq m
No. of Events Held This Year	1,493
No. of Attendants This Year	4,359,288

Contracting

Hip Hing Construction Company Limited

Service Offered	Construction engineering service
Total Contract Sum This Year	HK\$10,023 million
Contract on Hand	HK\$15,170 million (remaining work: HK\$12,292 million)
Major Projects	Additional and alteration works for residential development at Hung Hom Bay reclamation area; structural steel works for Mega Tower at Union Square; MGM Grand Paradise Macau; Arc de Triomphe, Macau, etc

Vibro (HK) Limited

Services Offered	Design and construction of foundation, site investigation, civil engineering works
Total Contract Sum This Year	HK\$99 million
Contract on Hand	HK\$571 million (remaining work: HK\$238 million)
Major Projects	URA's Hanoi Road K11; Route 8 Lai Chi Kok Viaduct (Piling Works); No. 39 Conduit Road; Magazine Gap Road No. 3 fresh water service reservoir and associated mainlaying; landslip preventive works for slopes in Tuen Mun; Nam Van Lake District C Lot C12, etc

Ngo Kee Construction Company Limited

Service Offered	Construction engineering service
Total Contract Sum This Year	HK\$12 million
Contract on Hand	HK\$91 million (remaining work: HK\$50 million)
Major Projects	Chinese International School at Braemar Hill and High Island Training Camp at Sai Kung

Barbican Construction Company, Limited

Services Offered	Civil engineering and slope stabilizing works
Total Contract Sum This Year	HK\$168 million
Contract on Hand	HK\$1,538 million (remaining work: HK\$627 million)
Major Projects	Landslip preventive measures projects in Hong Kong Island, Tai Po, Yuen Long and Kwai Tsing; Route 5 section between Shek Wai Kok Road and Chai Wan Kok; road works in Areas 13 and 14 Yuen Long; Road T3 and associated road works; footbridge and desilting chamber in Tseung Kwan O, etc

Project Key Facts and Figures

Extensive Trading Company Limited

Services Offered	Trading, retail, contracting and environmental consultancy
Types of Products	Tiles, sanitarywares, ironmongery, kitchen cabinet, GRC & FRP products, stone, ceiling and partition, mechanical equipments, waterworks fittings, building automation system, IAQ products, environmental products and systems, etc
No. of Retail Shops	5

Team Deco International Limited

Service Offered	Interior design service
Major Projects	Eton Place Hotel (Pudong, Shanghai), Beijing Niceline Club House, Seasons Cafe of Kempinski Hotel Beijing, Kempinski Hotel Dalian, Catwalk Renovation of International Tourist Club (Ho Chi Minh City, Vietnam), etc

Kentfull Contracting Limited

Service Offered	Fitting out works
Total Contract Sum This Year	HK\$180 million
Contract on Hand	HK\$45 million
Major Projects	AIG Tower; apartment at Jing Guang Centre, Beijing; club house and service apartments for New World Plaza, Dalian; guestrooms, corridors, casino podium for Marina Square Hotel and Casino in Manila, Philippines; fitting out and alteration of service apartment at 6-8 Hospital Road, etc

NWS Engineering Group Limited

Major Operating Companies	Young's Engineering Company Limited, Majestic Engineering Company Limited, Far East Engineering Services Limited and NWS Engineering Limited
Services Offered	Mechanical and electrical engineering services
Total Contract Sum This Year	HK\$1,968 million
Contract on Hand	HK\$3,016 million (remaining work: HK\$2,118 million)
Major Projects	URA's Hanoi Road K11, Hotel Development at KIL 11103 Hung Hom Bay, Shanghai Shi Mao International Plaza, Shanghai Grand Gateway, Wuhan New World World Trade Building, Shanghai Daning The Life Hub, etc

Transport

New World First Bus Services Limited

Service Offered	Franchised bus service in Hong Kong
Fleet Size	694 buses
No. of Routes	95
Daily Patronage	493,000
Average Fleet Age	6.8 years

Citybus Limited

Services Offered	Franchised bus service on Hong Kong Island	Franchised bus service for Airport and Tung Chung new town
Fleet Size	742 buses	163 buses
No. of Routes	96	16
Daily Patronage	517,000	50,000
Average Fleet Age	8.8 years	7.1 years

New World First Bus Services (China) Limited

Service Offered	Public bus service in Mainland China (JV "Kunming New World First Bus Services Limited" commenced operation in January 2004)
Fleet Size	692 buses
No. of Routes	41
Daily Patronage	457,000
Average Fleet Age	5.3 years

New World First Ferry Services Limited

Service Offered	Passenger ferry service within Hong Kong waters
Fleet Size	26 vessels (including 6 chartered vessels)
No. of Routes	10
Daily Patronage	40,000

New World First Ferry Services (Macau) Limited

Service Offered	Passenger ferry service between Tsim Sha Tsui, Hong Kong and Macau
Fleet Size	8 vessels
Daily Patronage	8,000

New World First Travel Services Limited

Services Offered	Provision of travel services and travel-related products, including harbour cruises, vessel chartering, sightseeing tours and travel insurance service, etc
------------------	---

Others

Urban Property Management Limited

Services Offered	Property asset and facility management
No. of Properties Managed	1,100 blocks of building
Gross Floor Area Managed	15 million sq m
Major Projects	Grand Millennium Plaza, Park Lane Shopper's Boulevard, Clovelly Court, City One Shatin, Riviera Gardens, etc

Kiu Lok Service Management Company Limited

Services Offered	Asset and facility management, agency and marketing, market research and promotion
Gross Floor Area Managed	730,000 sq m
Major Projects	New World Centre, Shun Tak Centre, Convention Plaza, etc.

Kiu Lok Property Services (China) Limited

Services Offered	Asset and facility management, agency and marketing, market research and promotion
Gross Floor Area Managed	2.35 million sq m
Major Projects	Beijing Sun Shine 100 International Apartments, Beijing Eastern International Apartments, Dalian New World Plaza, Beijing Fragrant Hill Villa, Beijing Embassy of Brunei Darussalam, Guangzhou Shun Tak Business Centre, etc

Urban Parking Limited

Services Offered	Car park operations and management, sales and installation of car park equipment
No. of Parking Spaces	About 26,000
Major Projects	Hong Kong International Airport, Hong Kong Convention and Exhibition Centre, New World Centre, Princess Margaret Hospital, public housing estates car parks of Hong Kong Housing Authority, etc

General Security (H.K.) Limited

Services Offered	Guarding services including gurkha; armed and armoured transportation; ad hoc events security management; TP (24 hr computerized phone recording); supply, installation and maintenance of security systems
Security Force	About 1,500
No. of Guarding Locations	94
Major Clients	Hong Kong Jockey Club, Jones Lang Lasalle, City One Shatin, Hong Kong Convention and Exhibition Centre, etc

Uniformity Security Company Limited

Services Offered	Security and guarding services; gurkha guard services; special events security management; design, installation and maintenance of security systems
Security Force	About 1,200
No. of Guarding Locations	105
Major Clients	MTR Corporation Ltd, Sino Estates Management Ltd, Leisure and Cultural Services Department, Judiciary premises, etc

Pollution & Protection Services Limited

Services Offered	Cleaning management, service apartment maid service, marble and granite protection and restoration, curtain wall cleaning, carpet/fabric protection treatment, etc
No. of Projects Managed	About 200
Major Clients	Airport Authority Hong Kong, Hong Kong Academy of Performing Arts, Island Shangri-La Hong Kong, The American Club, etc

Wai Hong Cleaning & Pest Control Company Limited

Services Offered	Cleaning management, pest and termite management, maid service, waste collection, disposal and recycling, etc
No. of Projects Managed	250
Major Clients	Airport Authority Hong Kong, MTR Corporation Ltd, Hong Kong Science Park, Hong Kong University of Science and Technology, Standard Chartered Bank, Swire Properties, etc

New China Laundry Limited

Services Offered	Laundry and dry-cleaning, linen product trading, maintenance and replenishment services to major hotels, restaurants and retail clients in Hong Kong; laundry and dry-cleaning service for hotels and restaurant and industrial textile wash for Guangdong Province in Mainland China
------------------	---

Sky Connection Limited

Service Offered	Retail of duty free liquor and tobacco
Locations of Shops	Hong Kong International Airport, Hong Kong-Macau Ferry Terminal and China Ferry Terminal

Care & Services Company Limited

Service Offered	Residential care for the elderly
No. of Elderly under Care	303
Total No. of Beds	330

CiF Solutions Limited

Services Offered	Packaged IT applications, enterprise solutions and professional IT consultancy services
Major Clients	ATICO International (HK) Ltd, British American Tobacco, Dah Chong Hong Ltd, SGS Hong Kong Ltd, Zuellig Pharma Ltd, Bausch and Lomb (HK) Ltd, etc

New World Insurance Management Limited

Service Offered	Risk and insurance management consultancy services
Annual Premium Handled	HK\$501 million
Major Clients	Asia Television Ltd, CALYON Corporate and Investment Bank, GlaxoSmithKline Ltd, Linfox Holdings Hong Kong Ltd, etc

Hong Kong Island Landscape Company Limited

Services Offered	Sale and hiring of plant products; design, building and maintenance of soft landscape work
Total Area of Nurseries	3.7 million sq ft
Major Clients	Hotel Inter-Continental, The Peninsula, Grand Hyatt Hong Kong, Hong Kong Academy of Performing Arts, The Dynasty Club, etc