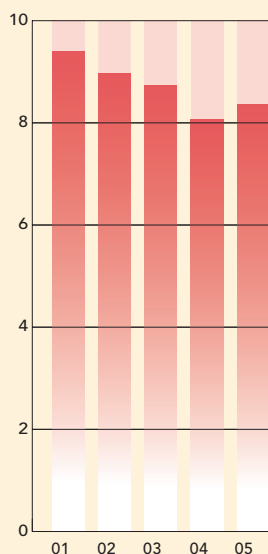


FIVE-YEAR FINANCIAL HIGHLIGHTS CHARTS

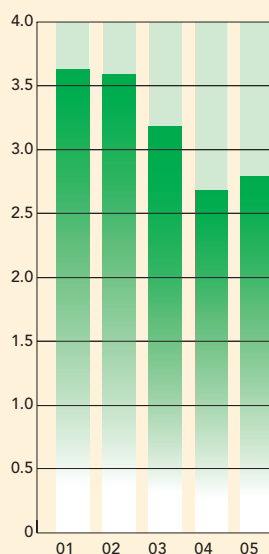
TOTAL ASSETS

(HK\$ IN BILLION)



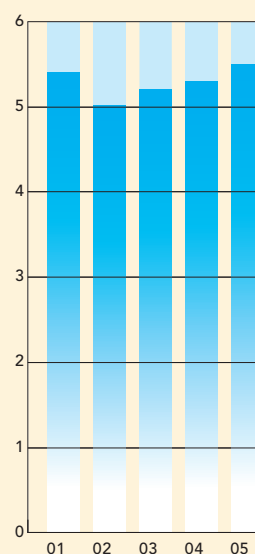
TOTAL LIABILITIES

(HK\$ IN BILLION)



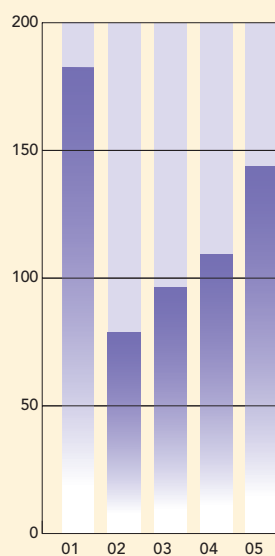
TOTAL NET ASSETS

(HK\$ IN BILLION)



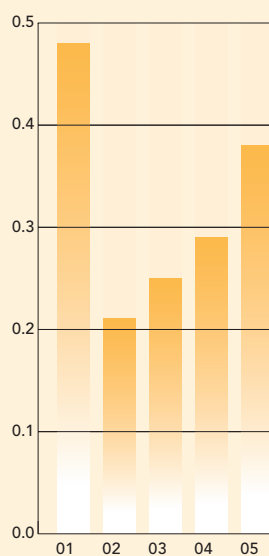
PROFIT FOR THE YEAR ATTRIBUTABLE TO THE EQUITY HOLDERS OF THE PARENT

(HK\$ IN MILLION)



BASIC EARNINGS PER SHARE FROM CONTINUING AND DISCONTINUED OPERATIONS

(HK\$)



DIVIDEND PER SHARE

(HK\$)

