

Financial Highlights

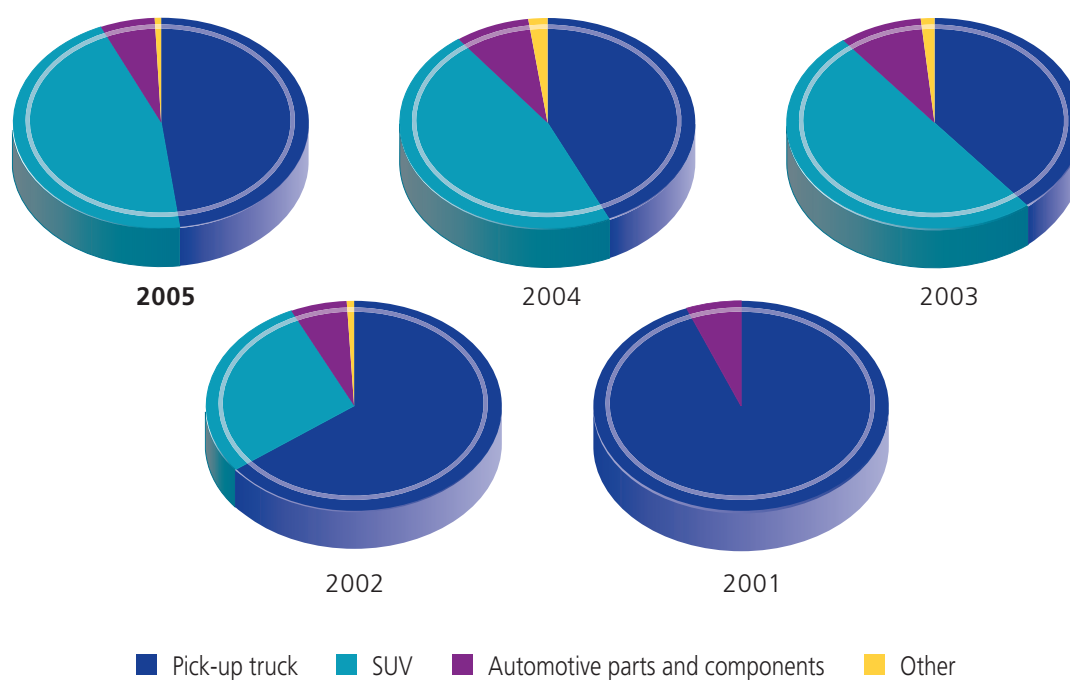
RESULTS HIGHLIGHTS

Year ended 31 December

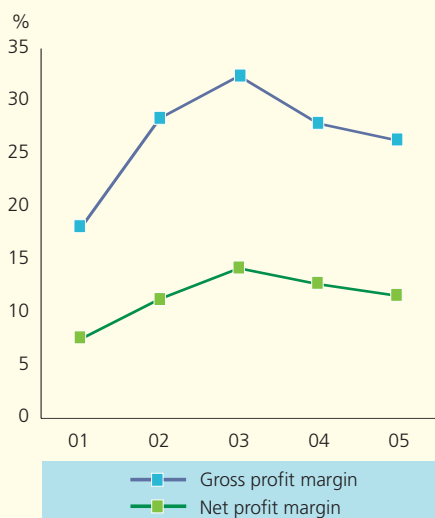
	2005	2004	2003	2002	2001
	RMB'000	RMB'000	RMB'000	RMB'000	RMB'000
Revenue	3,809,958	3,184,614	3,691,706	2,601,824	1,293,117
Gross profit	1,000,690	887,946	1,196,188	740,172	232,374
Profit before tax	561,568	552,969	872,639	521,119	161,938
Profit after tax attributable to equity holders of the parent	441,007	402,917	523,398	294,367	96,341
Earnings per share attributable to ordinary equity holders of the parent-basic	RMB0.47	RMB0.43	RMB0.76	RMB0.43	RMB0.14

* Adjusted to reflect the capitalisation issue of 472,100,000 shares on 1 February 2005.

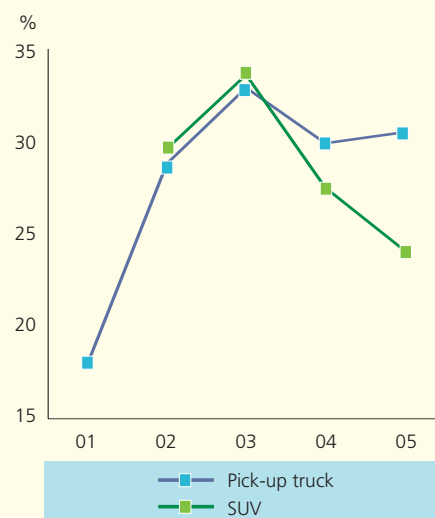
TURNOVER BREAKDOWN BY PRODUCTS



GROSS PROFIT MARGIN AND NET PROFIT MARGIN OF THE GROUP



GROSS PROFIT MARGIN OF PRODUCTS



SUMMARY OF FINANCIAL POSITION

As at 31 December

	2005 RMB million	2004 RMB million	2003 RMB million	2002 RMB million	2001 RMB million
Equity attributable to equity holders of the parent	3,505	3,143	2,740	485	191
Total assets	5,763	4,814	4,631	1,984	935
Bank borrowings	0	0	1	76	97
Return on equity (%)#	12.6	12.8	19.1	60.7	50.4
Return on asset (%)	7.7	8.4	11.3	14.8	10.3
Net cash in/(out) flow	360	(318)	1,894	518	(50)
Gearing ratio (%)*	0	0	<0.1	3.8	10.4
Current ratio (times)	2.1	2.5	2.5	1.3	1.0
Turnover for account receivables (days) (including bills receivable)	53	70	65	44	12
Inventory turnover (days)	66	47	51	54	78

Profit after tax attributable to equity holders of the parent divided by equity attributable to equity holders of the parent

* All bank borrowings divided by total assets