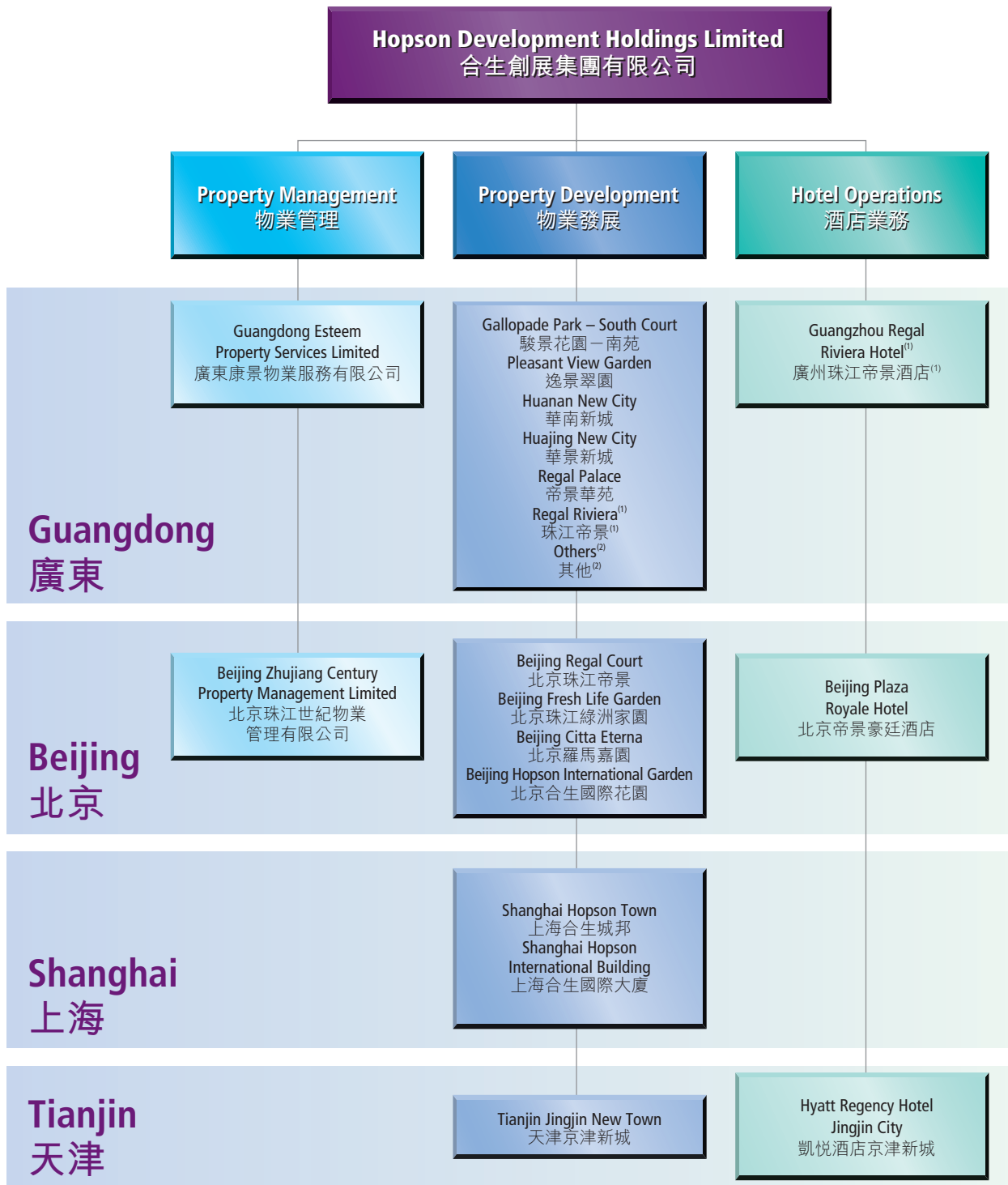


CORPORATE STRUCTURE

企業架構



Notes:
附註：

- (1) 69.5% owned by the Group
由本集團擁有69.5%權益
- (2) Others include development projects such as Huizhou Regal Riviera Bay, Hopson International New City, Gallopade Park, Fairview Garden, Fairview South Court, Regal Riviera Villa, Yunshan Xijing and Yijing Huayuan.
其他包括發展項目如惠州帝景灣、合生國際新城、駿景花園、愉景雅苑、愉景南苑、帝景山莊、雲山熹景及頤景華苑。