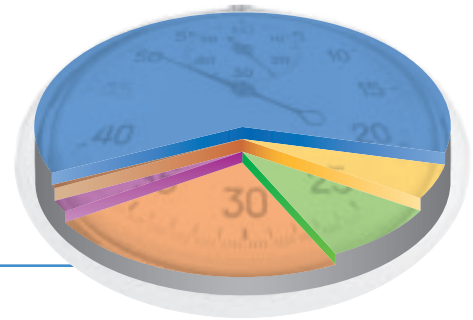




Financial Highlights

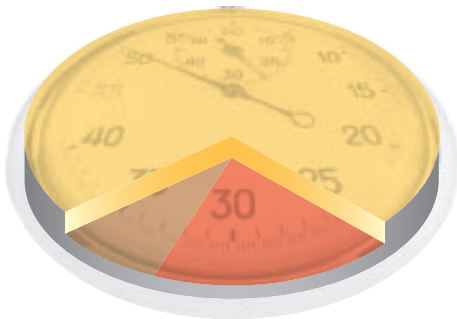
Turnover by principal activity for the year 2005

- 60.46% Steel manufacturing
- 5.05% Shipping operations
- 8.99% Electricity generation
- 23.77% Steel trading
- 1.69% Kitchen and laundry equipment
- 0.04% Others



Turnover by geographical location for the year 2005

- 8.71% The People's Republic of China: Hong Kong
- 71.93% The People's Republic of China: Elsewhere
- 19.36% Others





Financial Highlights

