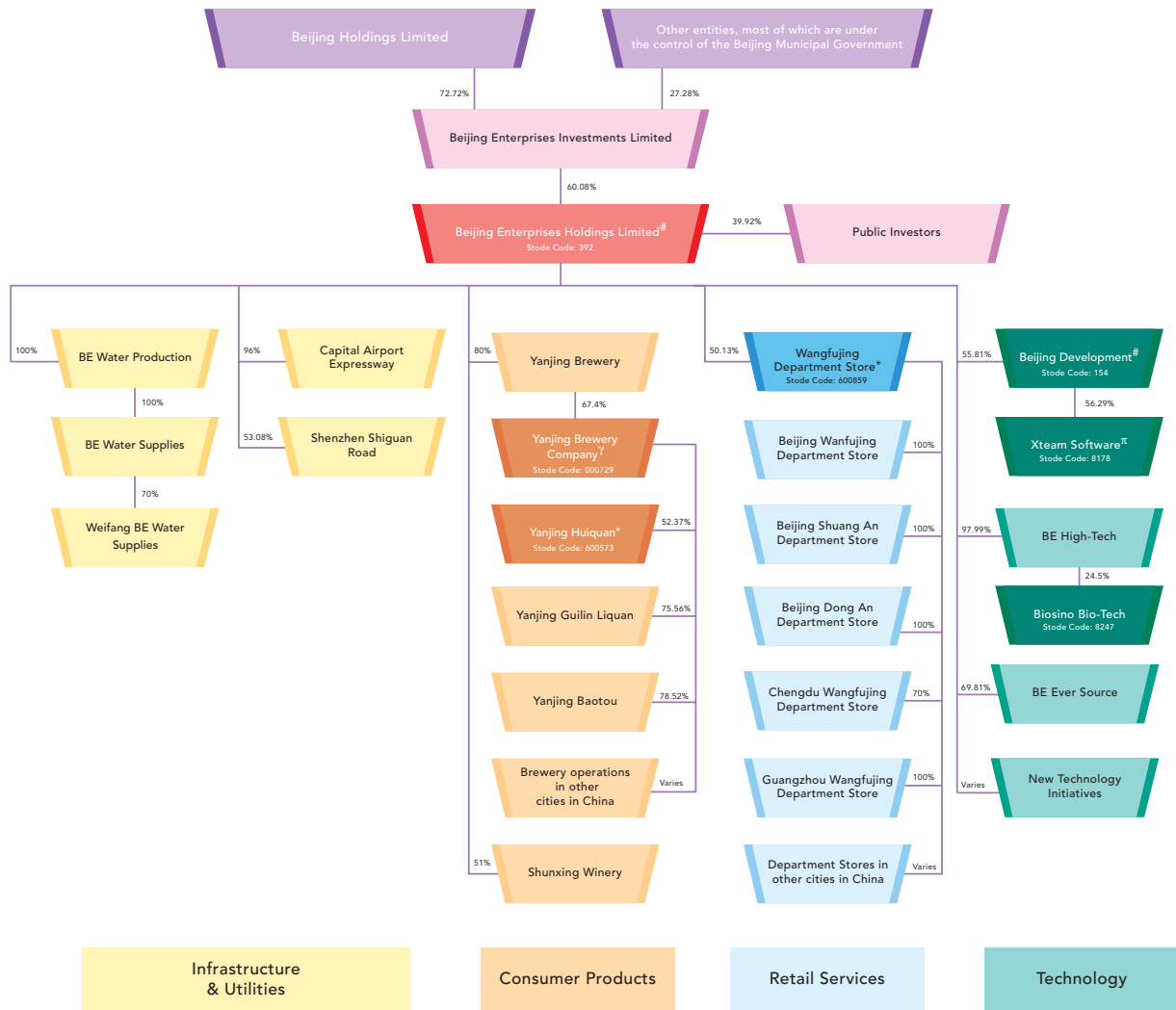


| CORPORATE STRUCTURE |

AS AT 11 APRIL 2006



* Listed on The Shanghai Stock Exchange
 γ Listed on The Shenzhen Stock Exchange
 # Listed on The Main Board of The Stock Exchange of Hong Kong Limited (the "Hong Kong Stock Exchange")
 π Listed on The Growth Enterprise Market of the Hong Kong Stock Exchange

| CORPORATE STRUCTURE |

Beijing Enterprises Holdings Limited and its subsidiaries (collectively the "Group") is currently engaged in four major sectors of business: infrastructure & utilities, consumer products, retail services and technology.

Infrastructure & utilities sector includes management and operation of the Capital Airport Expressway, the Shenzhen Shiguan Road and the operation concession of a water treatment plant in Beijing and Weifang in China.

Consumer products sector includes manufacturing, distribution and sale of beer and wine. Yanjing Brewery, currently operates 19 brewery production plants in 15 cities in China and has become one of the leading brewery group in China. Its major subsidiaries, namely Yanjing Brewery Co., Ltd. (stock code: 000729) and Fujian Yanjing Huiquan Brewery Co., Ltd. (stock code: 600573), are listed on The Shenzhen Stock Exchange and The Shanghai Stock Exchange, respectively. This sector also includes a wine production plant located in Beijing operated by Shunxing Winery.

Retail services sector represents the operation of department stores in Beijing and other major cities in China such as Chengdu, Chongqing, Guangzhou, Wuhan, Changsha and Baotou, etc. by Beijing Wangfujing Department Store (Group) Co., Ltd., a company listed on The Shanghai Stock Exchange. (stock code: 600859).

Technology sector includes various kinds of operations. Beijing Development, which is listed on The Main Board of The Stock Exchange of Hong Kong Limited ("Hong Kong Stock Exchange") (stock code: 154), is currently engaged in internet-related business service, information technology solutions for both hardware and software, the operation of multipurpose electronic payment cards system, on-line medical insurance and social security insurance system business. Xteam Software International Limited, one of its subsidiaries which is listed on The Growth Enterprises Market ("GEM") of the Hong Kong Stock Exchange (stock code: 8178), is currently engaged in sale of computer software and provision of related services.

Biosino Bio-Technology and Science Incorporation, an associate of the Group, is listed on the GEM of the Hong Kong Stock Exchange, (stock code: 8247) and principally engaged in manufacture, sale and distribution of in-vitro diagnostic reagents and a pharmaceutical product in China. Another company namely Ever Source Scientific and Technology Development Co., Ltd. is currently engaged in construction and installation of geothermal energy system. Save as disclosed above, the Group also takes part in other various new technology initiatives.