



中国移动通信
CHINA MOBILE

China Mobile Limited
Interim Report 2006

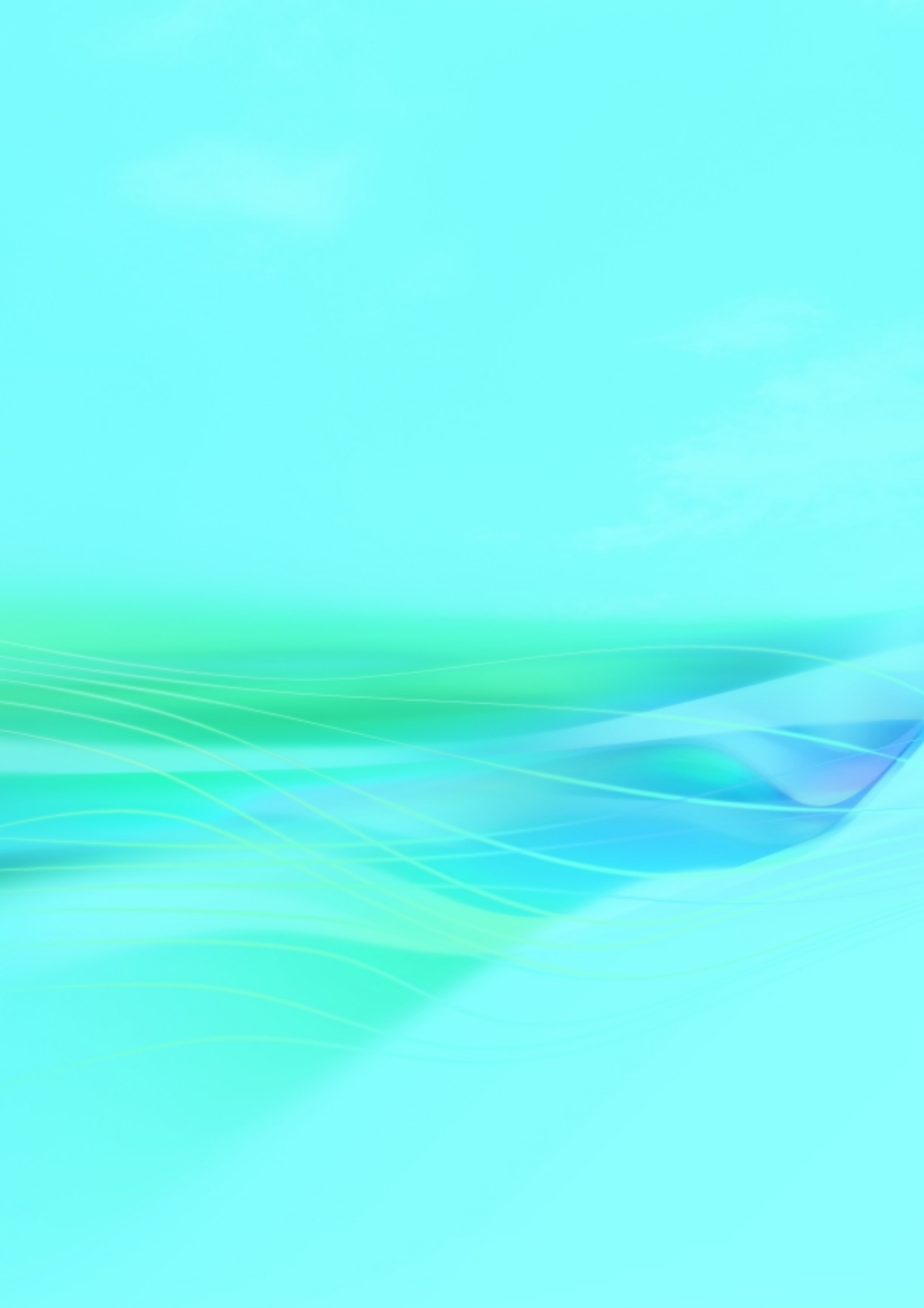
Stock Code : 941

正德厚生 臻于至善 

Responsibility makes perfection

CONTENTS

- 01 Chairman's Statement
- 04 Interim Financial Report
 - 04 Unaudited Consolidated Income Statement
 - 05 Unaudited Consolidated Statement of Changes in Equity
 - 06 Unaudited Consolidated Balance Sheet
 - 08 Unaudited Condensed Consolidated Cash Flow Statement
 - 09 Notes on the Unaudited Interim Financial Report
- 27 Independent Review Report
- 28 Discussion of Selected Items in the Interim Results
- 29 Other Information



CHAIRMAN'S STATEMENT



DEAR SHAREHOLDERS,

In the first half of 2006, the Group promoted the development of economies of scale, maintained innovative growth and responded to competition rationally. With the continuing push of three driving forces of new customers, new businesses and new voice usage, business in the eastern regions continued to grow, and the momentum of growth in the central and western regions and in the rural market remained robust. The Company achieved commendable overall operating results, reinforced its financial strengths and consolidated its market leading position in the mobile telecommunications market.

With the benefit of stable and rapid economic growth in China, vibrant market demand and a rational competition environment, in the first half of 2006, the Group continued to maintain a rapid and healthy development trend. For the six months ended 30 June 2006, the Group's operating revenue achieved notable growth and reached RMB136,979 million, representing an increase of 19.6 per cent. over the same period last year. EBITDA and profit attributable to shareholders reached RMB78,343 million and RMB30,168 million, respectively, representing an increase of 25.0 per cent. and 25.5 per cent. over the same period last year, respectively. EBITDA margin and margin of profit attributable to shareholders continued to be maintained at a high level of 57.2 per cent. and 22.0 per cent., respectively. Basic earnings per share reached RMB1.52, representing an increase of 24.6 per cent. compared with the same period last year. It is pleasing to note that the Group's revenue attributable to its value-added businesses continued to grow rapidly, and it amounted to RMB30,926 million, representing an increase of 37.1 per cent. over the same period last year. Such revenue, which accounted for 22.6 per cent. of the Group's operating revenue and representing an increase of 2.0 percentage points over the last

full year, continued to demonstrate robust development potential. The Group currently maintains a sound capital structure and solid financial strengths, thereby providing a firm foundation for its sustainable and healthy development in the future.

In the first half of 2006, the Group advocated and continued to promote rational competition, leveraged market opportunities, consolidated its competitive advantages in scale, brand, sales channel and service, and strengthened its innovative capabilities. Customer demand-oriented, the Group implemented effective measures to develop its market, and achieved notable results in the development of economies of scale. In the first half of 2006, the Group maintained rapid growth in its subscriber base, revenue and profit. In the first half of 2006, the total net addition in subscriber base was 25.775 million (excluding addition of subscribers arising from the acquisition of the former China Resources Peoples Telephone Company Limited (currently known as China Mobile Peoples Telephone Company Limited) ("Peoples Telephone")), and the average monthly subscribers net addition was over 4.29 million. As at 30 June 2006, the Group's total subscriber base was

approximately 274 million; voice usage volume demonstrated a favorable growth trend; total usage volume reached 569,203 million minutes, average minutes of usage per user per month (MOU) reached 367 minutes, average revenue per user per month (ARPU) kept at RMB88, and the Group maintained a rapid and healthy development momentum.

In 2006, on the basis of sustained subscriber growth in the eastern regions, the subscriber base in the central and western regions grew rapidly. In areas where there is a large proportion of rural population and where the penetration rate of mobile telecommunications is relatively low, the Group strengthened the construction of infrastructure including telecommunications network and sales channels, actively developed products and services targeting rural customers, launched sales packages that fit the unique consumption characteristics in rural areas and applied low cost strategies to tap into the enormous potential of the rural markets. These efforts have resulted in remarkable success.

The Group proactively developed value-added businesses and promoted product and service innovations; various value-added businesses maintained good growth momentum and the revenue attributable to such businesses is increasingly notable. In the first half of 2006, the Group's SMS volume continued to increase, WAP and "Color Ring" maintained rapid growth. New product offerings and new applications such as "IM" and "BlackBerry" were introduced to the market in the first half of 2006 and are gradually gaining recognition and popularity among customers. Through the promotion of the "Mobile Music Rank" and the establishment of the "Mobile Music Club", mobile music market was further developed. Complying with the collaboration and win-win principle, the Company established strategic cooperation with Phoenix Satellite Television and News Corporation to explore new opportunities for mobile telecommunications businesses and fully prepare for the development of the next generation of mobile information businesses.

In the first half of 2006, the Group strengthened its operation in areas such as brand development, service enhancement and network support to hone premium service quality. The Group continued to enhance brand awareness, emphasize brand differentiation and enriched brand association. The Group further consolidated and expanded customers services and sales channels, and provided its customers with more convenient services and service channels. The Group also refined its customer-oriented service systems and improved its service processes and services details. As a result, the Group solidly maintained the loyalty of its high-value and corporate customers, customer satisfaction continued to increase, brand influence widened and brand value continued to increase. In April 2006,

"China Mobile" ranked number 4 in the "BRANDZ™ Top 100 Most Powerful Brands" announced by Millward Brown, a global market research firm, and was the most valuable brand in Asia.

The Group enjoys remarkable advantages network coverage and quality. In the first half of 2006, the Group continued the centralized construction of network, optimized resource allocation and fully explored the potential of network resources, thereby further enhancing network capacity. The Group's network capacity reached 329.863 million users, population coverage rate reached 97 per cent., wireless connection rate reached 99 per cent., voice call drop rate was less than 0.8 per cent. and various network performance indicators continued to show favorable results. The coverage of the Group's global roaming services was further extended. As of the end of June 2006, the Group's GSM global roaming services covered 281 operators in 209 countries and regions and GPRS roaming services covered 111 countries and regions. The Group maintained its leading position in networks and business offerings.

On 28 March 2006, Peoples Telephone formally became the Company's wholly-owned subsidiary, and the listing of its shares was withdrawn from the Hong Kong Stock Exchange on 29 March 2006. The Company is proactively achieving synergies and, through the implementation of centralized and unified management and the integration of network and support systems, has achieved cost reduction. Combining the Group's and Peoples Telephone's experiences, the Company will improve its service and management level and extend the Group's advantages in network, service and business offerings to provide better roaming and cross-border services to subscribers in Hong Kong and Mainland China, with a view to generating greater returns for shareholders.

The Company has always put emphasis on its management and corporate governance. In the first half of 2006, the Company strengthened its integrated management over its operating subsidiaries and optimized its management process. Through the comprehensive implementation of a series of management reforms, the Group has further enhanced its management efficiency and the overall execution capabilities. In 2006, the Company continued to proceed with the special project in relation to the compliance with Section 404 of the Sarbanes-Oxley Act, and established internal control and risk management systems in accordance with the COSO framework which is in common practice internationally. The Company will further enhance its internal control and risk management to build a solid foundation for improving its corporate governance.

The Company has upheld its core value proposition of "responsibility makes perfection" and put emphasis on its corporate social responsibility. In the first half of 2006, in addition to making donations to educational programs in the poverty-stricken areas in the central and western regions, donating the "8899" SMS platform to the China Welfare Fund for the Handicapped and providing continuous assistance to its parent company in the implementation of the "Village-Connected Project", the Group also attached great importance to environmental protection and energy conservation, implemented the environmentally-friendly base station project and promoted "Scenery-Friendly Antennae", thereby contributing our share in building a harmonious society and benefiting the people's livelihood.

The Company's outstanding performance has won popular recognition and acclaim. In 2006, the Company was selected and ranked number 112 as compared to number 128 last year in "The World's 2000 Biggest Public Companies" by Forbes magazine. The Company was once again selected by Financial Times as one of the "FT Global 500" companies, ranked number 38 as compared to number 64 last year. The Company was also selected by Business Week as one of the 2006 global "Info Tech 100" companies, leaping to number 8 from number 17 last year. Based on the Group's solid financial strengths, tremendous business development potential and sound financial management, in July 2006, Moody's and Standard & Poor's revised the Company's credit rating upward to A2/Outlook Positive and A/Stable Outlook, respectively.

The Company consistently holds in the highest regard the interests of its shareholders and the returns achieved for them, especially the minority shareholders. Having taken into account various relevant factors, including the Company's sustained sound corporate fundamentals, cash flow position and requirements for its future sustainable development, and in accordance with the plan under which the dividend payout ratio will be 42 per cent. for the full year of 2006, the Board has resolved to pay an ordinary interim dividend of HK\$0.62 per share for the year 2006. Apart from that the interim profit and dividend payout remained at stable growth and considering the returns to shareholders, the Board has resolved to pay a special dividend for the year of 2006 after taking into account of the resultant impact on profit attributable to shareholders from revision of asset depreciable lives. The special interim dividend is HK\$0.09 per share. The Board considers that the Company's strong free cash flow will be capable of supporting the investments required to maintain its stable growth, while also providing shareholders with a favorable cash return. The Company will continue its efforts to achieve a sustainable and steadily increasing dividend over the longer term, with a view to generating the best possible returns for shareholders.

The continued rapid growth of China's domestic economy, the rise of urban and rural residents' disposable income and purchasing power and the vibrant demand for mobile telecommunications services have presented the Group with tremendous development opportunities. Rural development as driven by macroeconomic development, accelerated growth in the central and western regions and the development of the rural markets also present new market potential to the Group. The accelerating process of "informationalization" in China and the formation of "informationalization" service markets present a potentially tremendous demand for the development of mobile information businesses. With the development of China's telecommunications industry, competition will become increasingly regulated and rational. Meanwhile, the market liberalization and technology development will result in a more complicated competition situation. As the conditions for the Third Generation Mobile Communication (3G) Technology gradually mature, the issuance of 3G licences may result in substantial changes in the industry and the competition environment.

Looking to the future, the Group sees opportunities as well as challenges. The Group will pursue the spirit of innovation, and focus on favorable results. The Group will proactively develop mobile telecommunications in rural areas, actively develop value-added businesses, enhance the development of its economies of scale and expand its influence. As the only mobile telecommunications services partner for the 2008 Beijing Olympics, the Group will fully utilize its overall strength to provide premium quality mobile telecommunications services. At the same time, the Group will actively carry out preparatory work in the planning and construction of and market operations for 3G, in order to prepare for the launch of its commercial application. The Group will leverage off its advantages as a "Mobile Information Expert", actively explore market opportunities, maintain development momentum, create greater value, with a view to bringing long-term returns for its investors.



Wang Jianzhou

Chairman and Chief Executive Officer

Hong Kong, 17 August 2006

INTERIM FINANCIAL REPORT

UNAUDITED CONSOLIDATED INCOME STATEMENT

For the six months ended 30 June 2006 (Expressed in Renminbi)

| | Note | Six months ended 30 June | |
|--|------|--------------------------|---------------------|
| | | 2006 RMB million | 2005 RMB million |
| Operating revenue (Turnover) | 4 | | |
| Usage fees | | 87,806 | 73,813 |
| Monthly fees | | 12,867 | 13,826 |
| Other operating revenue | 5 | 36,306 | 26,908 |
| | | 136,979 | 114,547 |
| Operating expenses | | | |
| Leased lines | | 1,230 | 2,278 |
| Interconnection | | 8,946 | 6,634 |
| Depreciation | | 34,542 | 27,730 |
| Personnel | | 7,990 | 6,723 |
| Other operating expenses | | 42,317 | 37,845 |
| | | 95,025 | 81,210 |
| Profit from operations | | 41,954 | 33,337 |
| Amortization of other intangible assets | 11 | (100) | — |
| Other net income | | 1,847 | 1,608 |
| Non-operating net income | | 485 | 464 |
| Interest income | | 1,123 | 607 |
| Finance costs | | (610) | (680) |
| Profit before taxation | 6 | 44,699 | 35,336 |
| Taxation | 7 | (14,493) | (11,275) |
| Profit for the period | | 30,206 | 24,061 |
| Attributable to: | | | |
| Equity shareholders of the Company | | 30,168 | 24,043 |
| Minority interests | | 38 | 18 |
| Profit for the period | | 30,206 | 24,061 |
| Earnings per share — Basic | 9(a) | RMB1.52 | RMB1.22 |
| Earnings per share — Diluted | 9(b) | RMB1.51 | RMB1.22 |
| Dividend per share | | | |
| — Ordinary | 8(a) | HK\$0.62 | HK\$0.45 |
| — Special | 8(a) | HK\$0.09 | — |
| EBITDA (RMB million) | | 78,343 | 62,675 |

The notes on pages 9 to 26 form part of this interim financial report.

UNAUDITED CONSOLIDATED STATEMENT OF CHANGES IN EQUITY

For the six months ended 30 June 2006 (Expressed in Renminbi)

| | Attributable to equity shareholders of the Company | | | | | | | Minority | Total |
|---|--|------------------------------------|--------------------------------------|--------------------------------------|--|---------------------------------------|-------------------------|-----------------------------|--------------------------|
| | Share capital RMB million | Share premium RMB million | Capital reserve RMB million | General reserve RMB million | PRC | | Total RMB million | interests RMB million | equity RMB million |
| | | | | | statutory reserve RMB million | Retained profits RMB million | | | |
| At 1 January 2006 | 2,116 | 379,240 | (294,410) | 72 | 53,395 | 132,411 | 272,824 | 283 | 273,107 |
| Shares issued under share option scheme (Note 18) | 6 | 1,556 | (239) | — | — | — | 1,323 | — | 1,323 |
| Dividend approved and paid during the period (Note 8(b)) | — | — | — | — | — | (11,719) | (11,719) | — | (11,719) |
| Equity settled share-based transactions | — | — | 1,272 | — | — | — | 1,272 | — | 1,272 |
| Profit for the period | — | — | — | — | — | 30,168 | 30,168 | 38 | 30,206 |
| At 30 June 2006 | 2,122 | 380,796 | (293,377) | 72 | 53,395 | 150,860 | 293,868 | 321 | 294,189 |
| At 1 January 2005 | 2,102 | 375,279 | (295,410) | 72 | 42,277 | 108,874 | 233,194 | 243 | 233,437 |
| Shares issued under share option scheme | 4 | 784 | — | — | — | — | 788 | — | 788 |
| Dividend approved and paid during the period (Note 8(b)) | — | — | — | — | — | (9,635) | (9,635) | — | (9,635) |
| Equity settled share-based transactions | — | — | 697 | — | — | — | 697 | — | 697 |
| Profit for the period | — | — | — | — | — | 24,043 | 24,043 | 18 | 24,061 |
| At 30 June 2005 | 2,106 | 376,063 | (294,713) | 72 | 42,277 | 123,282 | 249,087 | 261 | 249,348 |

The notes on pages 9 to 26 form part of this interim financial report.

UNAUDITED CONSOLIDATED BALANCE SHEET

At 30 June 2006 (Expressed in Renminbi)

| | Note | Unaudited At 30 June 2006 RMB million | Audited At 31 December 2005 RMB million |
|--|------|---|---|
| Non-current assets | | | |
| Property, plant and equipment | 10 | 203,354 | 216,505 |
| Construction in progress | 10 | 44,800 | 34,201 |
| Land lease prepayments | | 7,261 | 7,243 |
| Goodwill | | 36,894 | 35,300 |
| Other intangible assets | | 772 | — |
| Interest in associates | | — | — |
| Other financial assets | | 77 | 77 |
| Deferred tax assets | | 7,350 | 6,625 |
| | | 300,508 | 299,951 |
| Current assets | | | |
| Inventories | | 2,010 | 2,365 |
| Accounts receivable | 12 | 8,039 | 6,603 |
| Other receivables | 13 | 2,653 | 1,911 |
| Prepayments and other current assets | | 3,912 | 3,583 |
| Amount due from ultimate holding company | 14 | 402 | 63 |
| Tax recoverable | | 192 | 165 |
| Deposits with banks | | 69,889 | 41,925 |
| Cash and cash equivalents | 15 | 71,411 | 64,461 |
| | | 158,508 | 121,076 |
| Current liabilities | | | |
| Accounts payable | 16 | 49,705 | 41,931 |
| Bills payable | | 1,177 | 1,359 |
| Deferred revenue | | 22,519 | 16,975 |
| Accrued expenses and other payables | | 46,130 | 40,007 |
| Amount due to ultimate holding company | 14 | 381 | 269 |
| Amount due to immediate holding company | | 105 | 96 |
| Obligations under finance lease | | 68 | 68 |
| Current taxation | | 6,843 | 9,249 |
| | | 126,928 | 109,954 |
| | | 31,580 | 11,122 |
| Net current assets | | | |
| Total assets less current liabilities carried forward | | 332,088 | 311,073 |

UNAUDITED CONSOLIDATED BALANCE SHEET (CONT'D)

At 30 June 2006 (Expressed in Renminbi)

| | Note | Unaudited At 30 June 2006 RMB million | Audited At 31 December 2005 RMB million |
|--|------|---|---|
| Total assets less current liabilities brought forward | | 332,088 | 311,073 |
| Non-current liabilities | | | |
| Interest-bearing borrowings | 17 | (36,563) | (36,545) |
| Deferred revenue, excluding current portion | | (1,145) | (1,324) |
| Deferred tax liabilities | | (191) | (97) |
| | | (37,899) | (37,966) |
| NET ASSETS | | 294,189 | 273,107 |
| CAPITAL AND RESERVES | | | |
| Share capital | 18 | 2,122 | 2,116 |
| Reserves | | 291,746 | 270,708 |
| Total equity attributable to equity shareholders of the Company | | 293,868 | 272,824 |
| Minority interests | | 321 | 283 |
| TOTAL EQUITY | | 294,189 | 273,107 |

The notes on pages 9 to 26 form part of this interim financial report.

UNAUDITED CONDENSED CONSOLIDATED CASH FLOW STATEMENT

For the six months ended 30 June 2006 (Expressed in Renminbi)

| | Six months ended 30 June | |
|--|--------------------------|---------------------|
| | 2006 RMB million | 2005 RMB million |
| Net cash from operating activities | 79,107 | 66,727 |
| Net cash used in investing activities | (61,132) | (29,533) |
| Net cash used in financing activities | (11,038) | (11,503) |
| Net increase in cash and cash equivalents | 6,937 | 25,691 |
| Cash and cash equivalents at 1 January | 64,461 | 45,149 |
| Effect of changes in foreign exchange rate | 13 | – |
| Cash and cash equivalents at 30 June | 71,411 | 70,840 |
| Analysis of the balances of cash and cash equivalents | | |
| Deposits with banks maturing within three months when placed | 11,293 | 14,369 |
| Cash and bank balances | 60,118 | 56,471 |
| | 71,411 | 70,840 |

The notes on pages 9 to 26 form part of this interim financial report.

NOTES ON THE UNAUDITED INTERIM FINANCIAL REPORT

(Expressed in Renminbi)

1. BASIS OF PREPARATION

The interim financial report of China Mobile Limited (formerly known as China Mobile (Hong Kong) Limited) (the "Company") and its subsidiaries (collectively known as the "Group") has been prepared in accordance with the applicable disclosure provisions of the Rules Governing the Listing of Securities on The Stock Exchange of Hong Kong Limited (the "Hong Kong Listing Rules"), including compliance with the Hong Kong Accounting Standard ("HKAS") 34, "Interim financial reporting", issued by the Hong Kong Institute of Certified Public Accountants ("HKICPA"). It was authorized for issuance on 17 August 2006.

The preparation of an interim financial report in conformity with HKAS 34 requires management to make judgements, estimates and assumptions that affect the application of policies and reported amounts of assets and liabilities, income and expenses on a year to date basis. Actual results may differ from these estimates.

This interim financial report contains condensed consolidated financial statements and selected explanatory notes. The notes include an explanation of events and transactions that are significant to an understanding of the changes in financial position and performance of the Group since the 2005 annual financial statements. The condensed consolidated interim financial statements and notes thereon do not include all of the information required for full set of financial statements prepared in accordance with Hong Kong Financial Reporting Standards ("HKFRS").

This interim financial report is unaudited, but has been reviewed by the Company's Audit Committee and the Company's auditors, KPMG, in accordance with Statement of Auditing Standards 700 "Engagements to review interim financial reports", issued by the HKICPA. KPMG's unmodified independent review report to the board of directors is included on page 27.

The unaudited consolidated financial information of the Group for the six months ended 30 June 2006 includes the financial information of the Company, the mobile telecommunications subsidiaries in each of the thirty-one provinces, autonomous regions and municipalities in the PRC and other subsidiaries including China Mobile Communication Company Limited, China Mobile Holding Company Limited, China Mobile (Shenzhen) Limited, Aspire Holdings Limited and its subsidiaries, Beijing P&T Consulting and Design Institute Company Limited, Advanced Roaming & Clearing House Limited and Fit Best Limited for the six months ended 30 June 2006, and the post-acquisition results of China Mobile Peoples Telephone Company Limited ("Peoples Telephone") for the period from 5 January 2006 (date of acquisition) to 30 June 2006.

The unaudited consolidated financial information of the Group for the six months ended 30 June 2005 includes the financial information of the Company, the mobile telecommunications subsidiaries in each of the thirty-one provinces, autonomous regions and municipalities in the PRC and other subsidiaries including China Mobile Communication Company Limited, China Mobile Holding Company Limited, China Mobile (Shenzhen) Limited, Aspire Holdings Limited and its subsidiaries, Beijing P&T Consulting and Design Institute Company Limited for the six months ended 30 June 2005, and the results of Advanced Roaming & Clearing House Limited for the period from 4 April 2005 (date of incorporation) to 30 June 2005.

The financial information relating to the financial year ended 31 December 2005 that is included in this interim financial report as being previously reported information does not constitute the Group's statutory financial statements for that financial year but is derived from those financial statements. Statutory financial statements for the year ended 31 December 2005 are available from the Company's registered office. The auditors have expressed an unqualified opinion on those financial statements in their report dated 16 March 2006.

2. SIGNIFICANT ACCOUNTING POLICIES

This interim financial report has been prepared in accordance with the same accounting policies adopted in the 2005 annual financial statements.

The HKICPA has issued a number of new and revised HKFRSs, which term collectively included HKASs and Interpretations, that are effective or available for early adoption for accounting periods beginning on or after 1 January 2006. The Group has determined the accounting policies expected to be adopted in the preparation of the Group's annual financial statements for the year ending 31 December 2006 on the basis of HKFRSs currently in issue, which the Group believes, do not have a significant impact on the Group's prior year financial position and results of operations.

The new and revised HKFRSs that will be effective or are available for voluntary early adoption in the annual financial statements for the year ending 31 December 2006 may be affected by the issue of additional interpretation(s) or other changes announced by the HKICPA subsequent to the date of this interim financial report. Therefore the policies that will be applied in the Group's financial statements for that period cannot be determined with certainty at the date of issuance of this interim financial report. The Group has not applied any new standards or interpretations that are not yet effective for the current accounting period (see Note 22).

3. SEGMENT REPORTING

No analysis of the Group's turnover and contribution to profit from operations by geographical segment or business segment has been presented as the majority of the Group's operating activities are carried out in the People's Republic of China (the "PRC") and less than 10 per cent. of the Group's turnover and contribution to profit from operations were derived from activities outside PRC or the Group's mobile telecommunications and related services activities. There is no other geographical or business segment with segment assets equal to or greater than 10 per cent. of the Group's total assets.

4. TURNOVER

Turnover represents usage fees, monthly fees and other operating revenue derived from the Group's mobile telecommunications networks, net of PRC business tax. Business tax is charged at approximately 3 per cent. of the corresponding revenue.

5. OTHER OPERATING REVENUE

Other operating revenue mainly represents voice value-added services revenue, short message services ("SMS") revenue, non-SMS data businesses revenue and interconnection revenue.

6. PROFIT BEFORE TAXATION

Profit before taxation is arrived at after charging:

| | Six months ended 30 June | |
|--|--------------------------|---------------------|
| | 2006 RMB million | 2005 RMB million |
| Interest on borrowings | 610 | 680 |
| Depreciation | 34,542 | 27,730 |
| Amortization of other intangible assets | 100 | — |
| Impairment loss for doubtful accounts | 1,708 | 1,471 |
| Operating lease charges: minimum lease payments | | |
| — land and buildings | 1,452 | 1,139 |
| — leased lines | 1,230 | 2,278 |
| — others | 896 | 653 |
| Contributions to defined contribution retirement plans | 507 | 465 |

7. TAXATION

| | Six months ended 30 June | |
|---|--------------------------|---------------------|
| | 2006 RMB million | 2005 RMB million |
| Current tax | | |
| Provision for PRC enterprise income tax on the estimated taxable profits for the period | 15,216 | 15,082 |
| Over-provision in respect of PRC enterprise income tax for prior period | (12) | (16) |
| | 15,204 | 15,066 |
| Deferred tax | | |
| Origination and reversal of temporary differences | (711) | (3,791) |
| | 14,493 | 11,275 |

- (i) No provision for Hong Kong Profits Tax has been made for the six months ended 30 June 2006 and 2005 as there were either no estimated Hong Kong assessable profits for these periods or sufficient taxation losses brought forward to offset the assessable profit for the period.
- (ii) The provision for the PRC enterprise income tax is based on a statutory tax rate of 33 per cent. of the assessable profit of the Group as determined in accordance with the relevant income tax rules and regulations of the PRC for the six months ended 30 June 2006 and 2005, except for certain subsidiaries of the Company or certain operations of the subsidiaries located within special economic zones in the PRC, which enjoy a preferential rate of 30 per cent. or 15 per cent. respectively.

8. DIVIDENDS

(a) Dividends attributable to the period

| | Six months ended 30 June | |
|--|--------------------------|---------------------|
| | 2006 RMB million | 2005 RMB million |
| Ordinary interim dividend declared after the balance sheet date of HK\$0.62 (equivalent to approximately RMB0.64) (2005: HK\$0.45 (equivalent to approximately RMB0.47)) per share | 12,709 | 9,267 |
| Special interim dividend declared after the balance sheet date of HK\$0.09 (equivalent to approximately RMB0.09) (2005: Nil) per share | 1,845 | – |
| | 14,554 | 9,267 |

The ordinary and special interim dividends which are declared in Hong Kong dollars are translated into RMB at the rate HK\$1 = RMB1.02942, being the rate announced by the State Administration of Foreign Exchange in the PRC on 30 June 2006. As the ordinary and special interim dividends are declared after the balance sheet date, the dividends are not recognized as liabilities as at 30 June 2006.

(b) Dividends attributable to the previous financial year, approved and paid during the period

| | Six months ended 30 June | |
|---|--------------------------|---------------------|
| | 2006 RMB million | 2005 RMB million |
| Final dividend in respect of the previous financial year, approved and paid during the period, of HK\$0.57 (equivalent to approximately RMB0.59) (2005: HK\$0.46 (equivalent to approximately RMB0.49)) per share | 11,719 | 9,635 |

9. EARNINGS PER SHARE

(a) Basic earnings per share

The calculation of basic earnings per share for the six months ended 30 June 2006 is based on the profit attributable to equity shareholders of the Company of RMB30,168,000,000 (2005: RMB24,043,000,000) and the weighted average number of 19,861,342,150 shares (2005: 19,710,875,575 shares) in issue during the six months ended 30 June 2006.

9. EARNINGS PER SHARE (CONT'D)

(b) Diluted earnings per share

The calculation of diluted earnings per share for the six months ended 30 June 2006 is based on the adjusted profit attributable to equity shareholders of the Company of RMB30,168,000,000 (2005: RMB24,121,000,000, after adding back the interest expense on the convertible notes) and the weighted average number of 20,020,815,227 shares (2005: 19,850,879,881 shares), calculated as follows:

(i) *Adjusted profit attributable to equity shareholders of the Company (diluted)*

| | Six months ended 30 June | |
|--|--------------------------|---------------------|
| | 2006 RMB million | 2005 RMB million |
| Profit attributable to equity shareholders | 30,168 | 24,043 |
| After tax effect of effective interest on liability component of convertible notes | — | 78 |
| Adjusted profit attributable to equity shareholders (diluted) | 30,168 | 24,121 |

(ii) *Weighted average number of shares (diluted)*

| | Six months ended 30 June | |
|---|-----------------------------|-----------------------------|
| | 2006 Number of shares | 2005 Number of shares |
| Weighted average number of shares at 30 June | 19,861,342,150 | 19,710,875,575 |
| Effect of conversion of convertible notes | — | 91,158,537 |
| Effect of deemed issue of ordinary shares under the Company's share option scheme for nil consideration | 159,473,077 | 48,845,769 |
| Weighted average number of shares (diluted) at 30 June | 20,020,815,227 | 19,850,879,881 |

10. PROPERTY, PLANT AND EQUIPMENT AND CONSTRUCTION IN PROGRESS

(a) Change in assets estimated useful lives

The estimated useful lives of certain existing network equipment are affected by the maturity of 3G technology. During the first half of 2006, the Group reviewed the current conditions of existing network equipment and assessed the impact of the continuous development in the telecommunications technology on that network equipment. As a result, the Group revised the estimated useful lives of 2G network equipment from 7 years to 5 years.

The change in accounting estimate is accounted for prospectively from 1 January 2006. The depreciation expenses for the six months ended 30 June 2006 increased by approximately RMB6,529,000,000 as a result of this change in useful lives.

(b) Acquisition of property, plant and equipment and construction in progress

During the six months ended 30 June 2006, the Group incurred capital expenditure of property, plant and equipment and construction in progress with a cost of RMB31,925,000,000 (for the six months ended 30 June 2005: RMB25,957,000,000).

(c) Disposal/write-off of property, plant and equipment

Property, plant and equipment with net book value of RMB59,000,000 were disposed of during the six months ended 30 June 2006 (for the six months ended 30 June 2005: RMB163,000,000), resulting in a gain on disposal of RMB9,000,000 (for the six months ended 30 June 2005 (loss on disposal): RMB99,000,000).

Property, plant and equipment with net book value of RMB721,000,000 were written off during the six months ended 30 June 2006 (for the six months ended 30 June 2005: RMB4,556,000,000).

11. ACQUISITION OF A SUBSIDIARY

On 10 November 2005, the Group, through Fit Best Limited, a company incorporated in the British Virgin Islands which is a wholly-owned subsidiary of the Company, made a voluntary conditional cash offer to acquire all the issued shares of China Resources Peoples Telephone Company Limited (currently known as "China Mobile Peoples Telephone Company Limited", or "Peoples Telephone"), a mobile telecommunications services provider based in Hong Kong with its shares listed on The Stock Exchange of Hong Kong Limited (the "SEHK"). The offer became unconditional in all respects on 29 December 2005.

On 5 January 2006, Fit Best Limited successfully acquired 736,221,101 shares of Peoples Telephone, representing 99.0% of the issued shares of Peoples Telephone. Up to 12 January 2006, the Company received additional valid acceptance in respect of the voluntary conditional cash offer to acquire 5,073,500 shares of Peoples Telephone, representing 0.68% of the issued shares of Peoples Telephone. At the same day, the Company applied the provisions of the Hong Kong Companies Ordinance to compulsorily acquire any remaining issued shares of Peoples Telephone.

11. ACQUISITION OF A SUBSIDIARY (CONT'D)

On 28 March 2006, the compulsory acquisition of all the issued and outstanding shares of Peoples Telephone was completed at a total cash consideration of HK\$3,384,000,000 (approximately RMB3,520,000,000) and the listing of the shares of Peoples Telephone on the SEHK was withdrawn with effect from 29 March 2006.

The newly acquired subsidiary has contributed profit for the period of RMB118,000,000 (equivalent to HK\$114,000,000). If the acquisition had occurred on 1 January 2006, the estimated Group revenue and profit for the period would be approximately the same as compared to the actual result.

The acquisition had the following effect on Group's assets and liabilities:

| | Recognized values on acquisition RMB million | Pre-acquisition carrying amounts RMB million |
|---|---|---|
| Property, plant and equipment | 1,146 | 1,146 |
| Construction in progress | 9 | 9 |
| Land lease prepayments | 11 | 11 |
| Other intangible assets | 859 | 27 |
| Inventories | 17 | 17 |
| Accounts receivable and other receivables | 194 | 194 |
| Cash and cash equivalents | 178 | 178 |
| Bills payable | (44) | (44) |
| Accounts payable and other payables | (192) | (192) |
| Interest-bearing borrowings | (104) | (104) |
| Deferred tax liabilities | (80) | (80) |
| Net identified assets and liabilities | 1,994 | <u>1,162</u> |
| Goodwill on acquisition | 1,594 | |
| | <u>3,588</u> | |
| Cost of acquisition | | |
| Purchase consideration, satisfied in cash | 3,520 | |
| Other directly attributable costs | 68 | |
| | <u>3,588</u> | |
| Cash acquired | <u>(178)</u> | |
| Net cash outflow | <u>3,410</u> | |

11. ACQUISITION OF A SUBSIDIARY (CONT'D)

Apart from other intangible assets, the acquiree's book value of net assets acquired at the date of acquisition approximates its fair value as disclosed above.

The goodwill is attributable to the significant synergies expected to arise after the Group's acquisition of Peoples Telephone.

The amortization expenses of other intangible assets for the six months ended 30 June 2006 amounted to RMB100,000,000 (for the six months ended 30 June 2005: Nil).

12. ACCOUNTS RECEIVABLE

Ageing analysis of accounts receivable, net of impairment loss for doubtful accounts is as follows:

| | Unaudited At 30 June 2006 RMB million | Audited At 31 December 2005 RMB million |
|----------------|---|---|
| Within 30 days | 5,835 | 5,269 |
| 31–60 days | 1,223 | 697 |
| 61–90 days | 540 | 637 |
| Over 90 days | 441 | — |
| | 8,039 | 6,603 |

Balances of subscribers are due for payment within one month from date of billing. Subscribers with balances that are overdue or exceed credit limits are required to settle all outstanding balances before any further phone calls can be made.

All of the accounts receivable are expected to be recovered within one year.

13. OTHER RECEIVABLES

Other receivables primarily comprise receivables from sales agents of revenue collected on behalf of the Group, utilities deposits and rental deposits.

All of the other receivables, except utilities deposits and rental deposits, are expected to be recovered within one year.

14. AMOUNTS DUE FROM/TO ULTIMATE HOLDING COMPANY

Amounts due from/to ultimate holding company are unsecured, non-interest bearing, repayable on demand and arose in the ordinary course of business.

15. CASH AND CASH EQUIVALENTS

| | Unaudited At 30 June 2006 RMB million | Audited At 31 December 2005 RMB million |
|---|---|---|
| Deposits with banks within three months of maturity | 11,293 | 11,069 |
| Cash at banks and in hand | 60,118 | 53,392 |
| | 71,411 | 64,461 |

16. ACCOUNTS PAYABLE

Accounts payable primarily includes payables for network expansion projects expenditure, leased lines and interconnection expenses.

| | Unaudited At 30 June 2006 RMB million | Audited At 31 December 2005 RMB million |
|-------------------------------------|---|---|
| Amounts payable in the next: | | |
| 1 month or on demand | 36,679 | 27,493 |
| 2-3 months | 4,055 | 4,599 |
| 4-6 months | 3,639 | 3,675 |
| 7-9 months | 1,279 | 1,448 |
| 10-12 months | 4,053 | 4,716 |
| | 49,705 | 41,931 |

The accounts payable are expected to be settled within one year.

17. INTEREST-BEARING BORROWINGS

| | Unaudited At 30 June 2006 RMB million | Audited At 31 December 2005 RMB million |
|--------------------------------|---|---|
| Bonds | 12,930 | 12,912 |
| Deferred consideration payable | 23,633 | 23,633 |
| | 36,563 | 36,545 |

All of the above interest-bearing borrowings are unsecured and are not expected to be settled within one year.

As at 30 June 2006, the deferred consideration payable represents the deferred consideration of RMB9,976,000,000 and RMB13,657,000,000 payable to immediate holding company in respect of the acquisitions of subsidiaries in 2002 and 2004 respectively.

The deferred consideration is unsecured, bearing interest at the rate of two-year US dollar LIBOR swap rate per annum. The balances are subordinated to other senior debts owed by the Company from time to time. The Company may make early payment of all or part of the balances at any time before the due date without penalty. The balances in respect of the acquisitions of subsidiaries in 2002 and 2004 are due on 1 July 2017 and 2019 respectively.

The Company has issued a joint and irrevocable guarantee (the "Guarantee") for the performance of the above bonds. China Mobile Communications Corporation ("CMCC"), the ultimate holding company, has also issued a further guarantee in relation to the performance by the Company of its obligations under the Guarantee.

18. SHARE CAPITAL

Issued and fully paid:

| | Number of shares | HK\$ million | Equivalent RMB million |
|---|---------------------|--------------|---------------------------|
| At 1 January 2006 | 19,835,160,399 | 1,984 | 2,116 |
| Shares issued under share option scheme | 48,936,400 | 5 | 6 |
| At 30 June 2006 | 19,884,096,799 | 1,989 | 2,122 |

At 30 June 2006, the outstanding options were as follows:

| | Number of instruments | Vesting conditions | Contractual life of options |
|------------------------------------|--------------------------|---|--------------------------------|
| Option granted to directors | | | |
| – on 25 April 2000 | 1,170,000 | 50% two years from the date of grant, 50% five years from the date of grant | 7 years |
| – on 22 June 2001 | 153,250 | 50% two years from the date of grant, 50% five years from the date of grant | 6 years |
| – on 3 July 2002 | 370,000 | 50% two years from the date of grant, 50% five years from the date of grant | 10 years |
| – on 28 October 2004 | 1,144,600 | 40% one year from the date of grant, 30% two years from the date of grant, 30% three years from the date of grant | 10 years |
| – on 21 December 2004 | 515,000 | 40% one year from the date of grant, 30% two years from the date of grant, 30% three years from the date of grant | 10 years |
| – on 8 November 2005 | 6,490,500 | 40% one year from the date of grant, 30% two years from the date of grant, 30% three years from the date of grant | 10 years |

18. SHARE CAPITAL (CONT'D)

| | Number of instruments | Vesting conditions | Contractual life of options |
|--|-----------------------|---|-----------------------------|
| Option granted to other employees | | | |
| – on 26 November 1999 | 1,000,000 | 50% on date of grant, 50% three years from the date of grant | 8 years |
| – on 25 April 2000 | 25,618,000 | 50% two years from the date of grant, 50% five years from the date of grant | 7 years |
| – on 22 June 2001 | 37,409,300 | 50% two years from the date of grant, 50% five years from the date of grant | 6 years |
| – on 3 July 2002 | 73,222,050 | 50% two years from the date of grant, 50% five years from the date of grant | 10 years |
| – on 28 October 2004 | 183,645,700 | 40% one year from the date of grant, 30% two years from the date of grant, 30% three years from the date of grant | 10 years |
| – on 8 November 2005 | 281,116,500 | 40% one year from the date of grant, 30% two years from the date of grant, 30% three years from the date of grant | 10 years |
| Total share options | 611,854,900 | | |

No option had been granted to the directors of the Company and employees of the Group during the six months ended 30 June 2006 (for the six months ended 30 June 2005: Nil). Share options involving a total number of 1,902,950 ordinary shares previously granted to certain employees of the Group were canceled during the period.

During the six months ended 30 June 2006, the employees of the Group and the directors of the Company exercised options to subscribe for 48,803,000 and 133,400 ordinary shares of the Company, respectively.

18. SHARE CAPITAL (CONT'D)

Details of share options exercised during the period

| Grant date | Exercise price | Weighted average closing price per share of the share options exercised | Proceeds received | Number of shares involved in the options |
|------------------|----------------|---|-------------------|--|
| 25 April 2000 | HK\$45.04 | HK\$46.49 | HK\$21,258,880 | 472,000 |
| 22 June 2001 | HK\$32.10 | HK\$41.44 | HK\$480,559,470 | 14,970,700 |
| 3 July 2002 | HK\$22.85 | HK\$41.17 | HK\$50,423,095 | 2,206,700 |
| 28 October 2004 | HK\$22.75 | HK\$41.00 | HK\$672,000,875 | 29,538,500 |
| 21 December 2004 | HK\$26.75 | HK\$44.45 | HK\$2,273,750 | 85,000 |
| 8 November 2005 | HK\$34.87 | HK\$39.02 | HK\$58,006,245 | 1,663,500 |
| | | | | 48,936,400 |

19. RELATED PARTY TRANSACTIONS

(a) Transactions with CMCC Group

The following is a summary of principal related party transactions entered into by the Group with CMCC and its subsidiaries, excluding the Group, (the "CMCC Group"), for the six months ended 30 June 2006 and 2005.

| | Note | Six months ended 30 June | |
|--|-------|--------------------------|---------------------|
| | | 2006 RMB million | 2005 RMB million |
| Property leasing and management services charges | (i) | 267 | 192 |
| Telecommunications services charges | (ii) | 595 | 407 |
| Interest paid/payable | (iii) | 325 | 350 |

Notes:

- (i) Property leasing and management services charges represent the rental and property management fees paid or payable to CMCC Group in respect of business premises and offices, retail outlets and warehouses.
- (ii) Telecommunications services charges represent the amounts paid or payable to CMCC Group for the telecommunications project planning, design and construction services; telecommunications line and pipeline construction services; and telecommunications line maintenance services.
- (iii) Interest paid/payable represents the interest paid or payable to China Mobile Hong Kong (BVI) Limited, the Company's immediate holding company, in respect of the balances of purchase consideration for acquisitions of subsidiaries.

19. RELATED PARTY TRANSACTIONS (CONT'D)

(b) Transactions with other state-controlled entities in the PRC

Apart from transactions with the parent company and its affiliates, the Group, a state-controlled enterprise, conducts certain business activities with enterprises directly or indirectly owned or controlled by the PRC government and governmental authorities and agencies (collectively referred to as "state-controlled entities") in the ordinary course of business. These transactions primarily include rendering and receiving services, sales and purchase of goods and deposits with financial institutions, are carried out at terms similar to those that would be entered into with non-state-controlled entities and have been reflected in the financial statements.

Set out below are the principal transactions and balances with state-controlled telecommunications operators and state-controlled financial institutions in the PRC:

(i) Principal transactions with state-controlled telecommunications operators in the PRC

| | Six months ended 30 June | |
|-------------------------|--------------------------|---------------------|
| | 2006 RMB million | 2005 RMB million |
| Interconnection revenue | 3,908 | 2,787 |
| Interconnection charges | 7,803 | 5,888 |
| Leased line charges | 805 | 2,158 |

(ii) Principal balances with state-controlled telecommunications operators in the PRC

| | Unaudited | Audited |
|---|--------------------------------------|--|
| | At 30 June 2006 RMB million | At 31 December 2005 RMB million |
| Accounts receivable and other receivables | 749 | 180 |
| Accounts payable and other payables | 2,770 | 2,172 |

19. RELATED PARTY TRANSACTIONS (CONT'D)

(b) Transactions with other state-controlled entities in the PRC (Cont'd)

(iii) Principal transactions with state-controlled financial institutions in the PRC

| | Six months ended 30 June | |
|-----------------|--------------------------|---------------------|
| | 2006 RMB million | 2005 RMB million |
| Interest income | 1,048 | 504 |

(iv) Principal balances with state-controlled financial institutions in the PRC

| | Unaudited | Audited |
|---------------------------|--------------------------------------|--|
| | At 30 June 2006 RMB million | At 31 December 2005 RMB million |
| Deposits with banks | 69,889 | 41,787 |
| Cash and cash equivalents | 64,630 | 59,368 |

Other than the above, the Group also has transactions with PRC governmental authorities and affiliates and other state-controlled entities. The Group believes that such activities are not material.

20. COMMITMENTS

(a) Capital commitments

Capital commitments outstanding not provided for in the interim financial report were as follows:

| | Unaudited At 30 June 2006 RMB million | Audited At 31 December 2005 RMB million |
|--|---|---|
| Commitments in respect of land and buildings | | |
| — authorized and contracted for | 1,214 | 1,478 |
| — authorized but not contracted for | 2,003 | 3,575 |
| | 3,217 | 5,053 |
| Commitments in respect of telecommunications equipment | | |
| — authorized and contracted for | 11,286 | 10,389 |
| — authorized but not contracted for | 33,065 | 43,899 |
| | 44,351 | 54,288 |
| Total commitments | | |
| — authorized and contracted for | 12,500 | 11,867 |
| — authorized but not contracted for | 35,068 | 47,474 |
| | 47,568 | 59,341 |

20. COMMITMENTS (CONT'D)

(b) Operating lease commitments

The total future minimum lease payments under non-cancellable operating leases are payable as follows:

| | Land and buildings RMB million | Leased lines RMB million | Others RMB million | Total RMB million |
|--------------------------------------|--------------------------------------|--------------------------------|-----------------------|----------------------|
| At 30 June 2006 | | | | |
| Within one year | 1,749 | 1,013 | 772 | 3,534 |
| After one year but within five years | 4,061 | 1,452 | 1,105 | 6,618 |
| After five years | 1,371 | 434 | 77 | 1,882 |
| | 7,181 | 2,899 | 1,954 | 12,034 |
| At 31 December 2005 | | | | |
| Within one year | 1,506 | 1,477 | 546 | 3,529 |
| After one year but within five years | 3,509 | 998 | 1,068 | 5,575 |
| After five years | 1,053 | 298 | 104 | 1,455 |
| | 6,068 | 2,773 | 1,718 | 10,559 |

21. POST BALANCE SHEET EVENTS

After the balance sheet date the directors declared ordinary and special interim dividends. Further details are disclosed in note 8(a).

22. POSSIBLE IMPACT OF AMENDMENTS, NEW STANDARDS AND INTERPRETATIONS ISSUED BUT NOT YET EFFECTIVE FOR THE ANNUAL ACCOUNTING PERIOD ENDING 31 DECEMBER 2006

Up to the date of issue of this interim financial report, the HKICPA has issued a number of amendments, new standards and interpretations which are not yet effective for the accounting period ending 31 December 2006 and which have not been adopted in this interim financial report.

Of these developments, the following relate to matters that may be relevant to the Group's operations and financial statements:

| | | Effective for accounting periods beginning on or after |
|---------------------|---|--|
| HKFRS 7 | Financial instruments: disclosures | 1 January 2007 |
| Amendment to HKAS 1 | Presentation of financial statements: capital disclosures | 1 January 2007 |

The Group is in the process of making an assessment of what the impact of these amendments, new standards and new interpretations is expected to be in the period of initial application. So far it has concluded that while the adoption of them may result in new or amended disclosures, it is unlikely to have a significant impact on the Group's results of operations and financial position.

INDEPENDENT REVIEW REPORT

To the Board of Directors of China Mobile Limited



Introduction

We have been instructed by the company to review the interim financial report set out on pages 4 to 26.

Respective responsibilities of directors and auditors

The Rules Governing the Listing of Securities on The Stock Exchange of Hong Kong Limited require the preparation of an interim financial report to be in compliance with the relevant provisions thereof and Hong Kong Accounting Standard 34 "Interim financial reporting" issued by the Hong Kong Institute of Certified Public Accountants. The interim financial report is the responsibility of, and has been approved by, the directors.

It is our responsibility to form an independent conclusion, based on our review, on the interim financial report and to report our conclusion solely to you, as a body, in accordance with our agreed terms of engagement, and for no other purpose. We do not assume responsibility towards or accept liability to any other person for the contents of this report.

Review work performed

We conducted our review in accordance with Statement of Auditing Standards 700 "Engagements to review interim financial reports" issued by the Hong Kong Institute of Certified Public Accountants. A review consists principally of making enquiries of group management and applying analytical procedures to the interim financial report and based thereon, assessing whether the accounting policies and presentation have been consistently applied unless otherwise disclosed. A review excludes audit procedures such as tests of controls and verification of assets, liabilities and transactions. It is substantially less in scope than an audit and therefore provides a lower level of assurance than an audit. Accordingly we do not express an audit opinion on the interim financial report.

Review conclusion

On the basis of our review, which does not constitute an audit, we are not aware of any material modifications that should be made to the interim financial report for the six months ended 30 June 2006.

KPMG

Certified Public Accountants

Hong Kong, 17 August 2006

DISCUSSION OF SELECTED ITEMS IN THE INTERIM RESULTS

1. STRONG CASH FLOW AND SOUND CAPITAL STRUCTURE

The Group continued to sustain its robust cash flow as a result of favorable business growth, proactive cost control measures, meticulous capital expenditure management and the effect of economies of scale. The Group's free cash flow (net cash generated from operating activities after deduction of capital expenditure incurred) was RMB47,182 million for the six months ended 30 June 2006. As at 30 June 2006, the Group's total cash and bank balances were RMB141,300 million, of which 95.2 per cent., 0.6 per cent. and 4.2 per cent. were denominated in RMB, U.S. dollars and Hong Kong dollars, respectively.

As at 30 June 2006, the Group's debt to capitalization ratio (capitalization represents the sum of total debt and total shareholders' equity value) was approximately 11.4 per cent.. At the end of June 2006, short-term and long-term borrowings of the Group totaled RMB37,808 million, representing a decrease of RMB164 million from year-end 2005, which reflects that the Group's financial position continued to remain at a sound level. Of the total borrowings, 37.5 per cent. was in RMB (consisting principally of RMB bonds), and 62.5 per cent. was in U.S. dollars (consisting principally of the balances of the deferred consideration for the acquisitions of the eight and the ten provincial telecommunications operators). Approximately 75.8 per cent. of the Group's borrowings were made at floating interest rates. The actual average interest rate of borrowings (including capitalized interest) of the Group was approximately 3.22 per cent. in the first half of 2006, whereas the actual interest coverage multiple (ratio of profit before interest and tax to interest expenses) amounted to 72 times.

The Group will continue to pursue prudent financial principles, strictly control financial risks, maintain its strong cash-flow generating capability, allocate its resources in a scientific manner, maintain a prudent debt policy and reinforce and develop favorable economic efficiency, with a view to generating greater returns for our shareholders continuously.

2. CAPITAL EXPENDITURE

The Group's capital expenditure for the first half of 2006 totaled approximately RMB31,925 million. Capital expenditure was mainly used for the construction of GSM networks, support systems, transmission facilities, infrastructure buildings and for the development of new technologies and new businesses. Capital expenditure was financed primarily by cash flow generated from operations. The Group will continue to pursue rational investments and cautiously consider the cost efficiency of any capital investment, with a view to ensuring favorable investment returns.

3. PERSONNEL EXPENSES

The Group continued to strengthen its highly-efficient staff management and incentive structure, promote human resources management, persistently implement effective and comprehensive budget management and performance-based evaluation, thereby maintaining a competitive advantage in terms of human resources while effectively controlling personnel expenses. Personnel expenses were RMB7,990 million in the first half of 2006, and accounted for 5.8 per cent. of the operating revenue which remained generally stable when compared with the same period in the prior year. The Group had a total of 105,456 employees as at 30 June 2006. In order to align the interest of the employees with that of the shareholders, the Group granted share options to employees pursuant to the share option schemes of the Company. The relevant cost of share options have been included in the above personnel expenses. Further details of the share option schemes and the share options granted are set out in Note 18 of the "Notes on the Unaudited Interim Financial Report" and in the section "Other Information — Directors', Chief Executive's and Employees' Rights to Acquire Shares" in this interim report.

4. DEPRECIATION EXPENSES AND ASSETS DISPOSED/WRITTEN OFF

In view of the maturity of 3G technology, the technical life and the estimated useful lives of certain existing network equipment are being affected. In accordance with prudent financial principles, the Company reviewed and assessed the situation of current network assets and decided to revise the estimated useful lives of 2G network equipment from 7 years to 5 years in the first half of 2006. The change in accounting estimate is accounted for prospectively from 1 January 2006. Depreciation expense was RMB34,542 million in the first half of 2006, representing an increase of 24.6 per cent. over the same period of the prior year, of which such change of estimated useful lives had resulted in an increase of depreciation expense by RMB6,529 million.

In addition, the Group continued to upgrade and replace certain functional obsolete equipment during the first half of 2006 and the relevant assets of RMB712 million were disposed and written off.

The change of estimated useful lives of certain assets is consistent with the prudent approach of the Group's financial principles that has been persistently adopted. It truly reflects the actual usage condition of those assets and further optimizes the asset quality, thereby laying down a solid foundation for the migration to next generation network and for the future development of our new businesses.

OTHER INFORMATION

DIRECTORS' AND CHIEF EXECUTIVE'S INTERESTS IN SHARES AND SHORT POSITIONS

Certain directors of the Company personally hold options to subscribe for ordinary shares of the Company. Details of such options are disclosed under the paragraph "Directors', chief executive's and employees' rights to acquire shares" below. These share options were granted pursuant to the terms of the share option schemes adopted by the Company.

Apart from those disclosed herein, as at 30 June 2006, none of the directors nor the chief executive of the Company had any interests or short positions in any of the shares, underlying shares or debentures of the Company or any of its associated corporations (within the meaning of the Securities and Futures Ordinance ("SFO")) that is required to be recorded and kept in the register in accordance with section 352 of the SFO, any interests required to be notified to the Company and The Stock Exchange of Hong Kong Limited pursuant to the Model Code for Securities Transactions by Directors of Listed Issuers (the "Model Code").

DIRECTORS', CHIEF EXECUTIVE'S AND EMPLOYEES' RIGHTS TO ACQUIRE SHARES

Share option schemes of the Company

During the six months ended 30 June 2006, no share option has been granted under the current share option scheme of the Company.

As at 30 June 2006, the directors and chief executive of the Company and employees of the Group had the following personal interests in options to subscribe for shares of the Company granted under the old share option scheme of the Company (adopted on 8 October 1997 and terminated on 24 June 2002) and the current share option scheme of the Company (effective on 24 June 2002).

| | No. of shares involved in the options outstanding at the beginning of the period | No. of shares involved in the options outstanding at period end | Date on which options were granted | No. of shares involved in the options lapsed during the period | No. of shares acquired on exercise of options during the period | Price per share to be paid on exercise of options HK\$ |
|---|---|---|--|--|---|---|
| Directors | | | | | | |
| WANG Jianzhou (also the Chief Executive Officer) | 600,000 | 515,000 | 21 December 2004 | – | 85,000 | 26.75 |
| | 970,000 | 970,000 | 8 November 2005 | – | – | 34.87 |
| LI Yue | 240,000 | 192,000 | 28 October 2004 | – | 48,000 | 22.75 |
| | 780,000 | 780,000 | 8 November 2005 | – | – | 34.87 |
| LU Xiangdong | 192,000 | 192,000 | 28 October 2004 | – | – | 22.75 |
| | 780,000 | 780,000 | 8 November 2005 | – | – | 34.87 |
| XUE Taohai | 100,000 | 100,000 | 3 July 2002 | – | – | 22.85 |
| | 192,000 | 192,000 | 28 October 2004 | – | – | 22.75 |
| | 780,000 | 780,000 | 8 November 2005 | – | – | 34.87 |
| ZHANG Chenshuang | 192,000 | 192,000 | 28 October 2004 | – | – | 22.75 |
| | 780,000 | 780,000 | 8 November 2005 | – | – | 34.87 |
| SHA Yuejia | 45,750 | 45,750 | 22 June 2001 | – | – | 32.10 |
| | 90,000 | 90,000 | 3 July 2002 | – | – | 22.85 |
| | 110,500 | 110,100 | 28 October 2004 | – | 400 | 22.75 |
| | 780,000 | 780,000 | 8 November 2005 | – | – | 34.87 |

OTHER INFORMATION (CONT'D)

DIRECTORS', CHIEF EXECUTIVE'S AND EMPLOYEES' RIGHTS TO ACQUIRE SHARES (CONT'D)

Share option schemes of the Company (Cont'd)

| | No. of shares involved in the options outstanding at the beginning of the period | No. of shares involved in the options outstanding at period end | Date on which options were granted | No. of shares involved in the options lapsed during the period | No. of shares acquired on exercise of options during the period | Price per share to be paid on exercise of options HK\$ |
|------------------------|--|---|------------------------------------|--|---|---|
| LIU Aili | 60,000 | 60,000 | 22 June 2001 | – | – | 32.10 |
| | 90,000 | 90,000 | 3 July 2002 | – | – | 22.85 |
| | 110,500 | 110,500 | 28 October 2004 | – | – | 22.75 |
| | 150,500 | 150,500 | 8 November 2005 | – | – | 34.87 |
| XU Long | 1,170,000 | 1,170,000 | 25 April 2000 | – | – | 45.04 |
| | 47,500 | 47,500 | 22 June 2001 | – | – | 32.10 |
| | 90,000 | 90,000 | 3 July 2002 | – | – | 22.85 |
| | 156,000 | 156,000 | 28 October 2004 | – | – | 22.75 |
| | 270,000 | 270,000 | 8 November 2005 | – | – | 34.87 |
| LO Ka Shui | 400,000 | 400,000 | 8 November 2005 | – | – | 34.87 |
| Frank WONG Kwong Shing | 400,000 | 400,000 | 8 November 2005 | – | – | 34.87 |
| Moses CHENG Mo Chi | 400,000 | 400,000 | 8 November 2005 | – | – | 34.87 |
| Employees* | 2,000,000 | 1,000,000 | 26 November 1999 | 1,000,000 | – | 33.91 |
| | 26,438,000 | 25,618,000 | 25 April 2000 | 348,000 | 472,000 | 45.04 |
| | 52,380,000 | 37,409,300 | 22 June 2001 | – | 14,970,700 | 32.10 |
| | 75,575,000 | 73,222,050 | 3 July 2002 | 146,250 | 2,206,700 | 22.85 |
| | 213,446,500 | 183,645,700 | 28 October 2004 | 310,700 | 29,490,100 | 22.75 |
| | 282,878,000 | 281,116,500 | 8 November 2005 | 98,000 | 1,663,500 | 34.87 |
| | | 611,854,900 | (Note (a)) | | | |

* The number of shares involved in the options outstanding at the beginning of the period included share options granted to Madam LI Mofang, Mr. HE Ning, Mr. LI Gang and Sir Julian Michael HORN-SMITH involving a total of 5,402,000 shares. Madam LI Mofang resigned as executive director, vice president and chief engineer of the Company in March 2006. Mr. HE Ning resigned as executive director and vice president of the Company and Mr. LI Gang resigned as executive director of the Company in January 2006. Sir Julian Michael HORN-SMITH resigned as non-executive director of the Company in June 2006.

Notes:

- (a) The total number of shares involved in the options outstanding at period end represents 3.07 per cent. of the issued share capital of the Company as at the latest practicable date prior to the printing of this report.

DIRECTORS', CHIEF EXECUTIVE'S AND EMPLOYEES' RIGHTS TO ACQUIRE SHARES (CONT'D)**Share option schemes of the Company (Cont'd)**

(b) Particulars of share options:

| Date of grant | Exercise period |
|------------------|---|
| 26 November 1999 | 26 November 1999 to 7 October 2007 (in respect of 50% of the options granted) 26 November 2002 to 7 October 2007 (in respect of the remaining 50% of the options granted) |
| 25 April 2000 | 25 April 2002 to 7 October 2007 (in respect of 50% of the options granted) 25 April 2005 to 7 October 2007 (in respect of the remaining 50% of the options granted) |
| 22 June 2001 | 22 June 2003 to 7 October 2007 (in respect of 50% of the options granted) 22 June 2006 to 7 October 2007 (in respect of the remaining 50% of the options granted) |
| 3 July 2002 | 3 July 2004 to 2 July 2012 (in respect of 50% of the options granted) 3 July 2007 to 2 July 2012 (in respect of the remaining 50% of the options granted) |
| 28 October 2004 | 28 October 2005 to 27 October 2014 (in respect of 40% of the options granted) 28 October 2006 to 27 October 2014 (in respect of 30% of the options granted) 28 October 2007 to 27 October 2014 (in respect of the remaining 30% of the options granted) |
| 21 December 2004 | 21 December 2005 to 20 December 2014 (in respect of 40% of the options granted) 21 December 2006 to 20 December 2014 (in respect of 30% of the options granted) 21 December 2007 to 20 December 2014 (in respect of the remaining 30% of the options granted) |
| 8 November 2005 | 8 November 2006 to 7 November 2015 (in respect of 40% of the options granted) 8 November 2007 to 7 November 2015 (in respect of 30% of the options granted) 8 November 2008 to 7 November 2015 (in respect of the remaining 30% of the options granted) |

Details of share options exercised during the period:

| Period during which options were exercised | Weighted average closing price per share immediately before dates of exercise of options | | Proceeds received | Number of shares involved in the options |
|--|--|-------|-------------------|--|
| | Exercise price | | | |
| | HK\$ | HK\$ | HK\$ | |
| 19 April 2006 to 11 May 2006 | 45.04 | 46.03 | 21,258,880 | 472,000 |
| 3 January 2006 to 30 June 2006 | 32.10 | 40.67 | 480,559,470 | 14,970,700 |
| 4 January 2006 to 30 June 2006 | 22.85 | 40.54 | 50,423,095 | 2,206,700 |
| 3 January 2006 to 30 June 2006 | 22.75 | 40.25 | 672,000,875 | 29,538,500 |
| 2 May 2006 | 26.75 | 45.10 | 2,273,750 | 85,000 |
| 6 January 2006 to 30 June 2006 | 34.87 | 38.61 | 58,006,245 | 1,663,500 |

OTHER INFORMATION (CONT'D)

DIRECTORS', CHIEF EXECUTIVE'S AND EMPLOYEES' RIGHTS TO ACQUIRE SHARES (CONT'D)

Share option scheme of Aspire Holdings Limited ("Aspire")

Pursuant to a resolution passed at the annual general meeting of the Company held on 24 June 2002, the share option scheme of Aspire (the "Aspire Scheme") was adopted.

As at 30 June 2006, the directors and the employees of Aspire had the following personal interests in options to subscribe for shares of Aspire granted under the Aspire Scheme.

| | No. of shares involved in the options outstanding at the beginning of the period | No. of shares involved in the options outstanding at the period end | Date on which options were granted | Normal period during which options are exercisable | No. of shares involved in the options lapsed during the period | Price per share to be paid on exercise of options US\$ |
|----------------------|--|---|------------------------------------|--|--|---|
| Directors of Aspire* | 2,800,000 | 2,800,000 | 18 February 2003 | (Note 2) | – | 0.182 |
| | 500,000 | 500,000 | 28 May 2004 | (Note 2) | – | 0.298 |
| Employees of Aspire* | 9,705,000 | 9,565,000 | 18 February 2003 | (Note 3) | 140,000 | 0.298 |
| | 720,000 | 640,000 | 18 April 2003 | (Note 3) | 80,000 | 0.298 |
| | 2,540,000 | 2,350,000 | 16 September 2003 | (Note 3) | 190,000 | 0.298 |
| | 1,970,000 | 1,810,000 | 18 March 2004 | (Note 3) | 160,000 | 0.298 |
| | 595,000 | 515,000 | 28 May 2004 | (Note 3) | 80,000 | 0.298 |
| | 18,180,000 (Note 1) | | | | | |

* During the six months ended 30 June 2006, no share options have been granted under the Aspire Scheme for the directors and chief executive of the Company.

Note 1: The total number of shares involved in the options outstanding at the end of the period represents 1.9 per cent. of the issued share capital of Aspire as at the date of this report.

Note 2: (a) 50 per cent. of the options are exercisable between the period:

— commencing on the later of:

(i) two years after the date of appointment as director or the date of grant of the option (as the case may be);
or

(ii) the listing of the shares of Aspire;

— ending on the date falling 10 years from the option grant date; and

(b) the remaining 50 per cent. of such options shall be exercisable between the period commencing three years after the initial 50 per cent. of the option becomes exercisable and ending on the date falling 10 years from the option grant date.

DIRECTORS', CHIEF EXECUTIVE'S AND EMPLOYEES' RIGHTS TO ACQUIRE SHARES (CONT'D)**Share option scheme of Aspire Holdings Limited ("Aspire") (Cont'd)**

Note 3: (a) 50 per cent. of the options granted to a particular employee are exercisable between the period:

- commencing on the later of:
 - (i) two years after the commencement of employment of that employee or the option offer date (as the case may be); or
 - (ii) the listing of the shares of Aspire;
 - ending on the date falling 10 years from the option grant date; and
- (b) the remaining 50 per cent. of such options shall be exercisable between the period commencing three years after the initial 50 per cent. of the option becomes exercisable and ending on the date falling 10 years from the option grant date.

No options granted under the Aspire Scheme were exercised during the six months ended 30 June 2006.

Since the options granted pursuant to the Aspire Scheme are for the subscription of shares in Aspire which are not listed, the value of the options granted is not required to be disclosed under the Rules Governing the Listing of Securities on The Stock Exchange of Hong Kong Limited (the "Listing Rules").

Share option schemes of China Mobile Peoples Telephone Company Limited ("Peoples Telephone")

Pursuant to the resolutions passed by the shareholders of Peoples Telephone on 4 March 2004, the pre-IPO share option scheme (the "Peoples Telephone Pre-IPO Scheme") and the share option scheme of Peoples Telephone (the "Peoples Telephone Scheme") were adopted.

On 10 November 2005, Fit Best Limited, a wholly-owned subsidiary of the Company, extended voluntary cash offers to acquire all the issued shares in the share capital of Peoples Telephone and to cancel all outstanding options granted under the Peoples Telephone Pre-IPO Scheme. The offers became unconditional on 29 December 2005 and closed on 12 January 2006.

As the Peoples Telephone Pre-IPO Scheme ceased to have effect after the listing of the shares of Peoples Telephone on The Stock Exchange of Hong Kong Limited, no further share options were granted under the Peoples Telephone Pre-IPO Scheme thereafter. No share option has ever been granted under the Peoples Telephone Scheme.

The total number of shares involved in the share options granted under the Peoples Telephone Pre-IPO Scheme which were outstanding at the beginning and at the end of the period were 13,820,000 and 2,640,000, respectively. All the share options outstanding at the beginning of the period were granted to the employees of Peoples Telephone on 11 March 2004, and the exercise price of which was HK\$4.55 per share. Grantees of the outstanding share options are entitled to exercise the share options from 11 March 2005 to 10 March 2014.

No share option granted under the Peoples Telephone Pre-IPO Scheme has been exercised during the six months ended 30 June 2006. Share options involving 900,000 and 10,280,000 shares were canceled and lapsed, respectively in accordance with the terms of Peoples Telephone Pre-IPO Scheme during the period.

Apart from the foregoing, at no time during the six months ended 30 June 2006 was the Company, any of its holding companies or subsidiaries, a party for any arrangement to enable the directors or chief executive of the Company or any of their spouses or children under eighteen years of age to acquire benefits by means of the acquisition of shares in or debentures of the Company or any other body corporate.

SUBSTANTIAL INTERESTS IN THE SHARE CAPITAL OF THE COMPANY

The Company has been notified of the following interests in the Company's issued shares at 30 June 2006 amounting to 5 per cent. or more of the ordinary shares in issue:

| | | Ordinary shares held directly | Ordinary shares held indirectly | Percentage of total issued shares |
|-------|---|----------------------------------|------------------------------------|--------------------------------------|
| (i) | China Mobile Communications Corporation | – | 14,890,116,842 | 74.88% |
| (ii) | China Mobile (Hong Kong) Group Limited | – | 14,890,116,842 | 74.88% |
| (iii) | China Mobile Hong Kong (BVI) Limited | 14,890,116,842 | – | 74.88% |

Note: In light of the fact that China Mobile Communications Corporation and China Mobile (Hong Kong) Group Limited directly or indirectly control one-third or more of the voting rights in the shareholders' meetings of China Mobile Hong Kong (BVI) Limited, in accordance with the SFO, the interests of China Mobile Hong Kong (BVI) Limited are deemed to be, and have therefore been included in, the interests of China Mobile Communications Corporation and China Mobile (Hong Kong) Group Limited.

Apart from the foregoing, as at 30 June 2006, no person or corporation had any interest in the share capital of the Company as recorded in the registers required to be kept under section 336 of the SFO as having an interest in 5 per cent. or more of or any short position in the issued share capital of the Company.

PROSPECTS

In the second half of 2006, the Group will continue to pursue rational competition, develop new customers, new businesses and new voice usage, endeavor to maintain growth with innovation and further promote the development of economies of scale. In addition to its comprehensive development, the Group will increase its efforts in developing mobile telecommunications in rural areas through the establishment and enhancement of fundamental mobile telecommunications coverage network, service and sales networks and agricultural information network for rural areas. The Group will, on the strength of its voice business, continue to develop value-added businesses, strengthen the preparation of new product and application offerings, ceaselessly create new business areas and strive to become the "Mobile Information Expert".

PURCHASE, SALE OR REDEMPTION OF THE COMPANY'S LISTED SECURITIES

During the six months ended 30 June 2006, neither the Company nor any of its subsidiaries purchased, sold or redeemed any of the Company's listed securities.

AUDIT COMMITTEE

The Audit Committee reviewed with management the accounting principles and practices adopted by the Group and discussed auditing, internal control and financial report matters including the review of the unaudited interim report for the six months ended 30 June 2006.

COMPLIANCE WITH THE CODE PROVISIONS OF THE CODE ON CORPORATE GOVERNANCE PRACTICES

Throughout the six months ended 30 June 2006, other than the roles of the Chairman and the Chief Executive Officer being performed by Mr. Wang Jianzhou, the Company has complied with all the code provisions of the Code on Corporate Governance Practices as set out in Appendix 14 to the Listing Rules.

Mr. Wang Jianzhou joined the board of directors of the Company (the "Board") in November 2004 and has been the Chairman and the Chief Executive Officer of the Company since his appointment to the Board. Mr. Wang is in charge of the overall management of the Company.

The Company considers that the combination of the roles of the Chairman and the Chief Executive Officer can promote the efficient formulation and implementation of the Company's strategies which will enable the Group to grasp business opportunities efficiently and promptly. The Company considers that through the supervision of its Board and its independent non-executive directors, a balancing mechanism exists so that the interests of the shareholders are adequately and fairly represented.

COMPLIANCE WITH THE MODEL CODE

The Company has adopted the Model Code as set out in Appendix 10 to the Listing Rules. All directors have confirmed, following enquiry by the Company, that they have complied with the required standard set out in the Model Code throughout the period from 1 January 2006 to 30 June 2006.

CLOSURE OF REGISTER OF MEMBERS

The register of members of the Company will be closed from 6 September 2006 to 8 September 2006 (both days inclusive). During this period, no transfer of shares will be registered. In order to qualify for the 2006 ordinary and special interim dividends, all transfers of shares accompanied by the relevant share certificates must be lodged with the Company's share registrar, Hong Kong Registrars Limited, at Shops 1712-1716, 17th Floor, Hopewell Centre, 183 Queen's Road East, Wan Chai, Hong Kong not later than 4:00 p.m. on 5 September 2006. The ordinary and special interim dividends will be paid on or about 15 September 2006 to those shareholders on the register of members on 8 September 2006.

SUPPLEMENTAL INFORMATION FOR ADS HOLDERS

The above unaudited financial information has been prepared in accordance with the generally accepted accounting principles applicable in Hong Kong ("HK GAAP"), which differ in certain significant respects from those applicable in the United States ("US GAAP"). The significant differences between HK GAAP and US GAAP that affect the Group's results for the six months ended 30 June 2006 are substantially the same as those disclosed in the Company's 2005 annual report. The effect of the significant differences between HK GAAP and US GAAP on the Group's unaudited consolidated profit attributable to equity shareholders for the six months ended 30 June 2006 is set out below. The US GAAP adjustments shown below have been prepared by management and have not been subject to independent audit.

| | Six months ended 30 June 2006 | | Six months ended 30 June 2005 | |
|---|----------------------------------|----------------|----------------------------------|-------------|
| | US\$ million | RMB million | US\$ million | RMB million |
| Profit attributable to equity shareholders under | | | | |
| HK GAAP | 3,774 | 30,168 | 2,905 | 24,043 |
| US GAAP adjustments | (73) | (579) | 43 | 355 |
| Approximate profit attributable to equity shareholders under US GAAP | 3,701 | 29,589 | 2,948 | 24,398 |
| Approximate basic net income per share in accordance with US GAAP | US\$0.19 | RMB1.49 | US\$0.15 | RMB1.24 |
| Approximate diluted net income per share in accordance with US GAAP | US\$0.18 | RMB1.48 | US\$0.15 | RMB1.23 |
| Approximate basic net income per ADS in accordance with US GAAP * | US\$0.93 | RMB7.45 | US\$0.75 | RMB6.19 |
| Approximate diluted net income per ADS in accordance with US GAAP * | US\$0.92 | RMB7.39 | US\$0.74 | RMB6.17 |

* Based on a ratio of 5 ordinary shares to one ADS.

Solely for the convenience of the reader, the table above has been translated into United States dollars at the rate of US\$1.00 = RMB7.9943 quoted by the Federal Reserve Bank of New York on 30 June 2006. No representation is made that the Renminbi amounts could have been, or could be, converted into United States dollars at that rate or at any other certain rate on 30 June 2006 or on any other certain date.

FORWARD-LOOKING STATEMENTS

Certain statements contained in this interim report may be viewed as "forward-looking statements" within the meaning of Section 27A of the U.S. Securities Act of 1933, as amended, and Section 21E of the U.S. Securities Exchange Act of 1934, as amended. Such forward-looking statements involve known and unknown risks, uncertainties and other factors, which may cause the actual performance, financial condition or results of operations of the Company to be materially different from any future performance, financial condition or results of operations implied by such forward-looking statements. Further information regarding these risks, uncertainties and other factors is included in the Company's most recent Annual Report on Form 20-F filed with the U.S. Securities and Exchange Commission (the "SEC") and in the Company's other filings with the SEC.

China Mobile Limited

60/F., The Center

99 Queen's Road Central

Hong Kong

Tel: (852) 3121 8888

Fax: (852) 3121 8809

Website: www.chinamobileltd.com