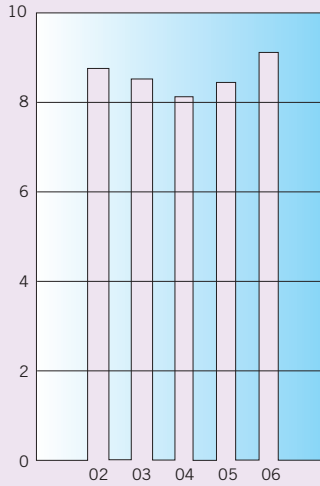
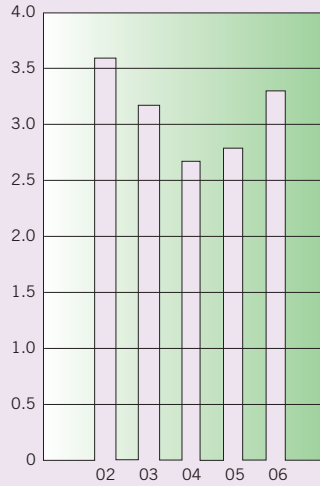


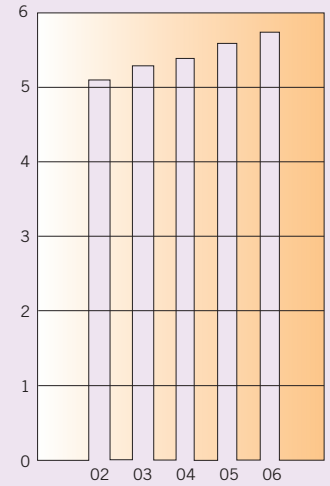
**TOTAL ASSETS**  
HK\$ IN BILLION



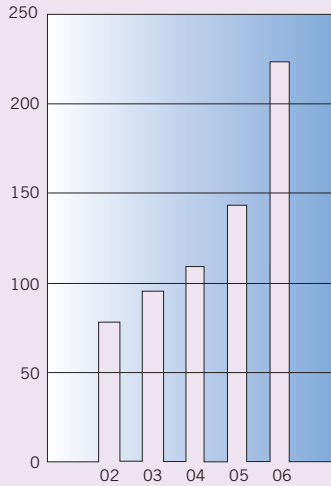
**TOTAL LIABILITIES**  
HK\$ IN BILLION



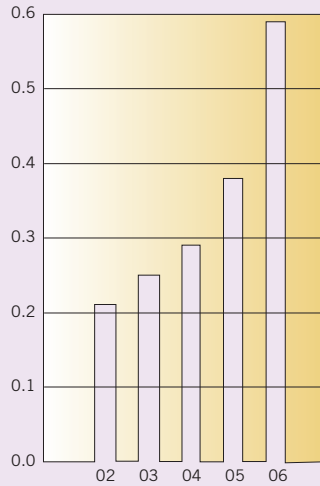
**TOTAL NET ASSETS**  
HK\$ IN BILLION



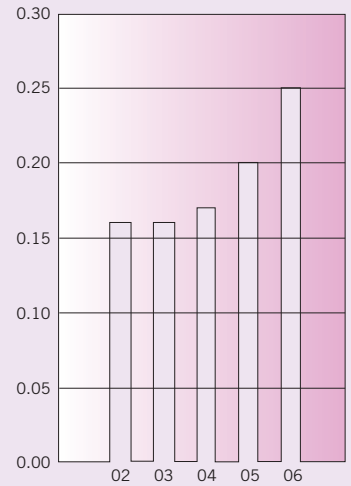
**PROFIT FOR THE YEAR ATTRIBUTABLE TO EQUITY HOLDERS OF THE COMPANY**  
HK\$ IN MILLION



**BASIC EARNINGS PER SHARE FROM CONTINUING AND DISCONTINUED OPERATIONS**  
HK\$



**DIVIDEND PER SHARE**  
HK\$





For the accounting year ended 31 December 2006, the audited profit attributable to equity holders of the Company amounted to HK\$223,141,000 (basic earnings per share: HK\$0.59), an increase of 55.6% over the previous year.