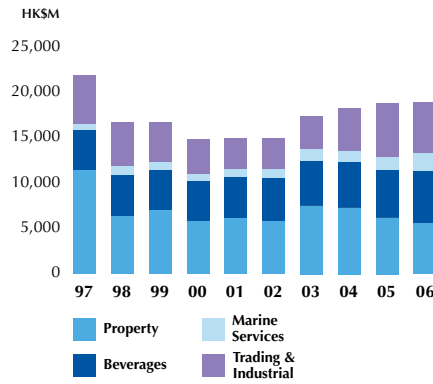
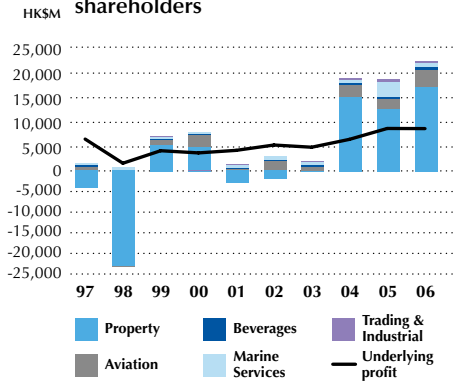


# Ten-Year Financial Summary

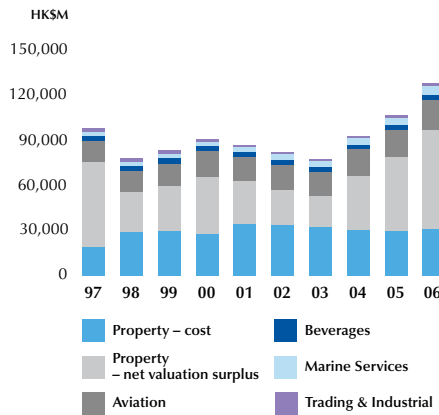
### Turnover



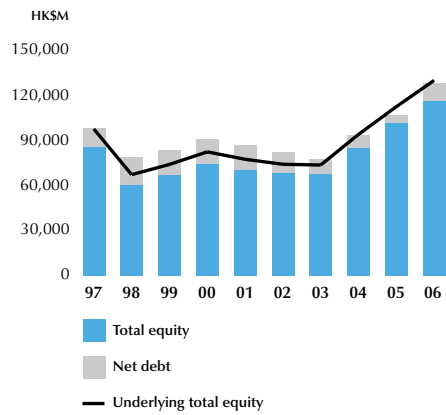
### Profit attributable to the Company's shareholders



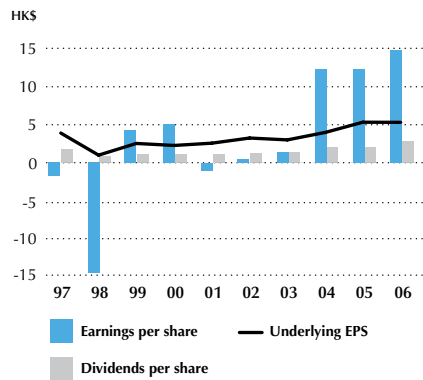
### Net assets employed



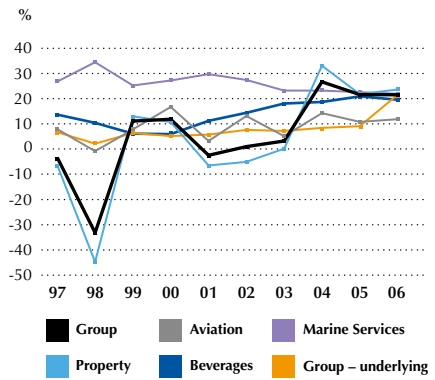
### Total equity and net debt



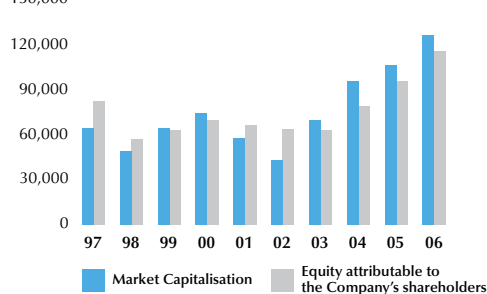
### Earnings and dividends per 'A' share



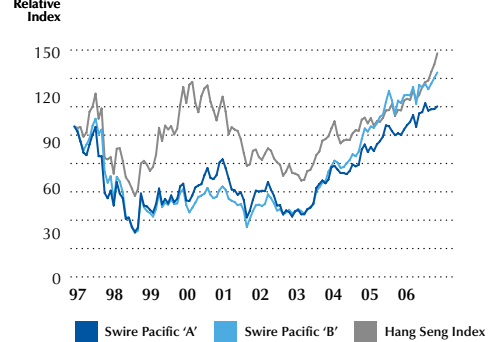
### Returns on average equity\*



### Equity attributable to the Company's shareholders and market capitalisation at year end



### Swire Pacific share price relative to HSI



\* Returns on average equity for Trading & Industrial Division are not shown on the graph as restructuring within the division has rendered the comparison of returns between years unmeaningful.

	1997	1998	1999	2000	2001	2002	2003	2004	2005	2006
	HK\$M	HK\$M	HK\$M	HK\$M	HK\$M	HK\$M	HK\$M	HK\$M	HK\$M	HK\$M
<b>PROFIT AND LOSS ACCOUNT</b>										
<b>Turnover</b>										
Property	11,449	6,363	7,024	5,787	6,163	5,798	7,539	7,306	6,197	5,595
Beverages	4,381	4,552	4,450	4,439	4,513	4,787	4,955	4,978	5,187	5,750
Marine Services	730	970	809	843	893	991	1,216	1,297	1,492	1,997
Trading & Industrial	5,385	4,851	4,420	3,816	3,453	3,442	3,637	4,704	6,036	5,554
Head Office	26	28	21	21	29	28	40	39	25	215
	21,971	16,764	16,724	14,906	15,051	15,046	17,387	18,324	18,937	19,111
<b>Profit attributable to the Company's shareholders</b>										
Property	(4,364)	(23,137)	5,341	4,881	(2,956)	(2,129)	68	15,097	12,684	16,983
Aviation	1,004	(106)	1,040	2,510	520	2,128	843	2,393	1,928	3,605
Beverages	323	266	164	153	235	276	363	385	474	480
Marine Services	450	626	467	505	617	658	646	741	3,035	834
Trading & Industrial	13	(198)	92	(84)	130	4	228	388	520	444
Head Office	(309)	(413)	(475)	(187)	(193)	(300)	(132)	(186)	116	220
	(2,883)	(22,962)	6,629	7,778	(1,647)	637	2,016	18,818	18,757	22,566
Interim and final dividends for the year	2,756	1,304	1,707	1,738	1,738	1,996	2,052	3,062	3,154	4,333
Share repurchases	1,833	–	–	–	–	540	60	–	–	–
Retained profit less share repurchases	(7,472)	(24,266)	4,922	6,040	(3,385)	(1,899)	(96)	15,756	15,603	18,233
<b>BALANCE SHEET</b>										
<b>Net Assets Employed</b>										
Property – cost and working capital	18,602	28,550	29,346	27,272	33,932	33,380	32,114	30,041	29,609	30,558
– valuation surplus	56,826	26,956	30,110	38,141	28,510	23,011	20,217	36,004	48,483	65,694
Aviation	13,496	13,381	14,323	16,740	15,898	16,565	16,260	17,304	18,431	19,941
Beverages	3,630	3,723	3,838	3,509	3,369	3,479	3,111	2,936	2,930	3,201
Marine Services	2,244	2,569	2,962	2,752	2,899	3,814	4,335	4,772	5,061	6,026
Trading & Industrial	2,712	2,283	1,994	1,849	1,767	1,379	1,042	1,363	1,540	1,715
Head Office	168	540	637	87	102	27	283	410	166	(114)
	97,678	78,002	83,210	90,350	86,477	81,655	77,362	92,830	106,220	127,021
<b>Financed by</b>										
Equity attributable to the Company's shareholders	81,864	56,649	62,473	68,923	65,507	62,983	62,440	78,625	94,843	114,481
Minority interests	3,309	3,494	3,972	4,691	4,291	4,537	4,806	5,943	5,929	610
Short-term (surplus)/financing	(2,116)	4,677	3,192	1,687	2,489	4,222	4,207	1,053	(611)	(340)
Long-term financing	14,621	13,182	13,573	15,049	14,190	9,913	5,909	7,209	6,059	12,270
	97,678	78,002	83,210	90,350	86,477	81,655	77,362	92,830	106,220	127,021
<b>'A' shares</b>										
Earnings/(loss) per share	(1.83)	(14.75)	4.27	5.02	(1.06)	0.41	1.32	12.29	12.25	14.74
Dividends per share	1.77	0.84	1.10	1.12	1.12	1.30	1.34	2.00	2.06	2.83
Equity attributable to shareholders per share	52.75	36.50	40.25	44.41	42.20	41.09	40.79	51.35	61.95	74.78
<b>'B' shares</b>										
Earnings/(loss) per share	(0.37)	(2.95)	0.85	1.00	(0.21)	0.08	0.26	2.46	2.45	2.95
Dividends per share	0.35	0.17	0.22	0.22	0.22	0.26	0.27	0.40	0.41	0.57
Equity attributable to shareholders per share	10.55	7.30	8.05	8.88	8.44	8.22	8.16	10.27	12.39	14.96
<b>Ratio</b>										
Return on average equity attributable to the Company's shareholders	-3.38%	-33.16%	11.13%	11.84%	-2.45%	0.99%	3.21%	26.68%	21.63%	21.56%
Return on average equity attributable to the Company's shareholders (historic cost)	18.32%	4.62%	11.15%	9.53%	10.17%	11.76%	10.30%	12.80%	15.64%	14.23%
Gearing ratio	14.68%	29.69%	25.23%	22.73%	23.90%	20.93%	15.04%	9.77%	5.41%	10.37%
Interest cover – times	(22.96)	(85.69)	14.87	22.28	(4.57)	(1.96)	4.45	21.72	34.09	46.65
Dividend cover – times	(1.05)	(17.61)	3.88	4.48	(0.95)	0.32	0.98	6.15	5.95	5.21
<b>Underlying</b>										
Profit (HK\$M)	6,591	1,701	4,235	3,792	4,307	5,389	4,942	6,538	8,742	8,716
Equity attributable to Company's shareholders (HK\$M)	93,641	63,333	69,541	76,985	72,540	68,957	68,107	87,020	105,300	128,563
Return on average equity attributable to Company's shareholders	6.73%	2.17%	6.37%	5.18%	5.76%	7.62%	7.21%	8.43%	9.09%	7.45%
Earnings per 'A' share (HK\$)	4.19	1.09	2.73	2.45	2.77	3.49	3.23	4.27	5.71	5.69
Earnings per 'B' share (HK\$)	0.84	0.22	0.55	0.49	0.55	0.70	0.65	0.85	1.14	1.14
Equity attributable to 'A' shareholders per share (HK\$)	60.34	40.81	44.81	49.60	46.74	44.98	44.50	56.84	68.77	83.97
Equity attributable to 'B' shareholders per share (HK\$)	12.07	8.16	8.96	9.92	9.35	9.00	8.90	11.37	13.75	16.79
Gearing ratio	12.88%	26.72%	22.78%	20.43%	21.66%	19.18%	13.82%	8.84%	4.87%	9.24%
Interest cover – times	54.84	8.09	7.62	8.23	8.30	7.63	9.47	5.34	12.82	13.44
Dividend cover – times	2.39	1.30	2.48	2.18	2.48	2.70	2.41	2.14	2.77	2.01

**Notes:**

1. All years are shown in accordance with the group's current accounting policies and disclosure. Consequently years prior to 2005 may be different to those originally presented.
2. The equity attributable to the Company's shareholders and its return by division for 2004-2006 are shown in the Financial Review – Investment Appraisal and Performance Review on page 44.
3. Underlying profit and equity are discussed on page 38.