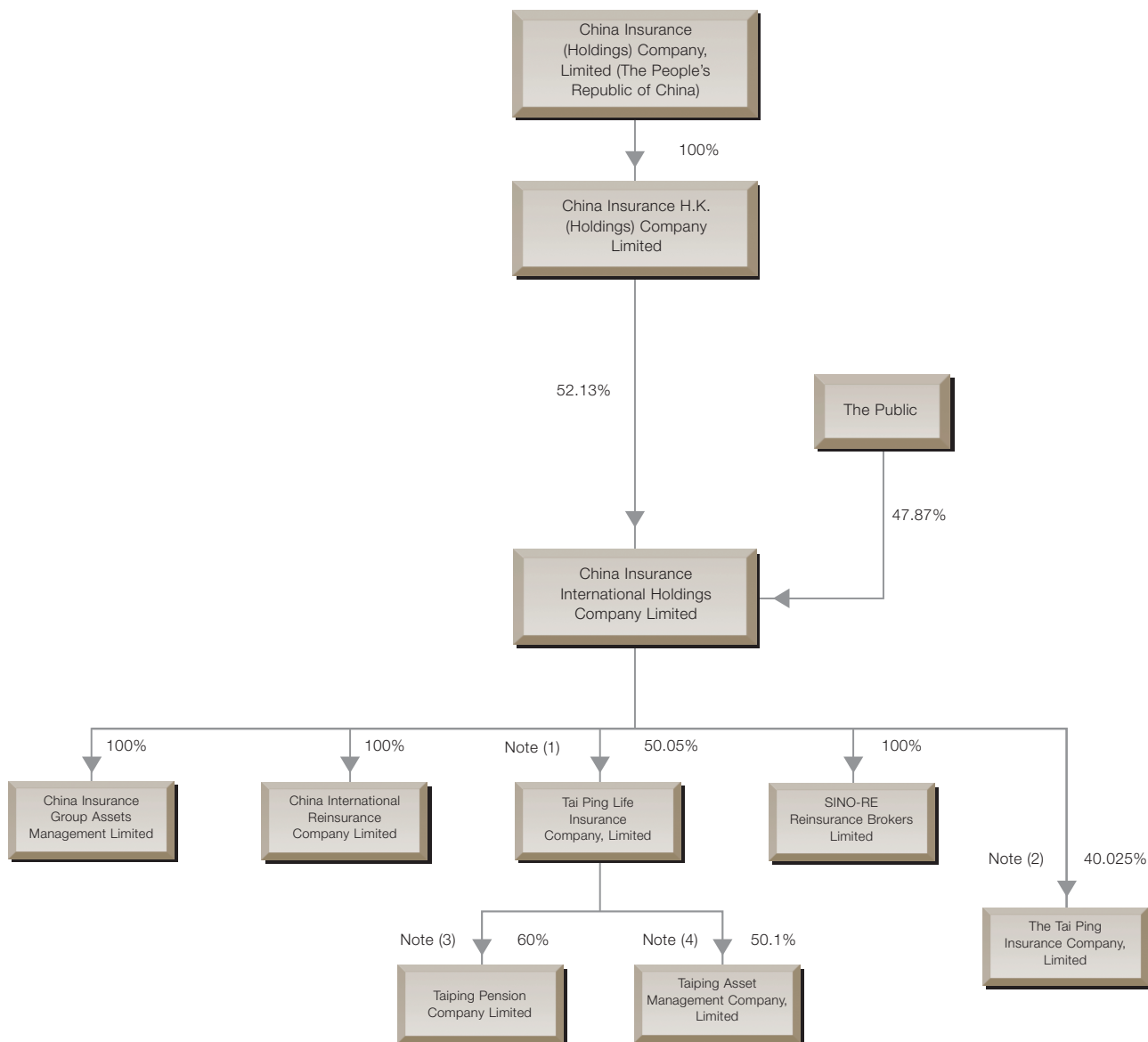


# CORPORATE STRUCTURE



Note (1): CIHC and Fortis hold the remaining 25.05% and 24.90% equity interest in TPL respectively.

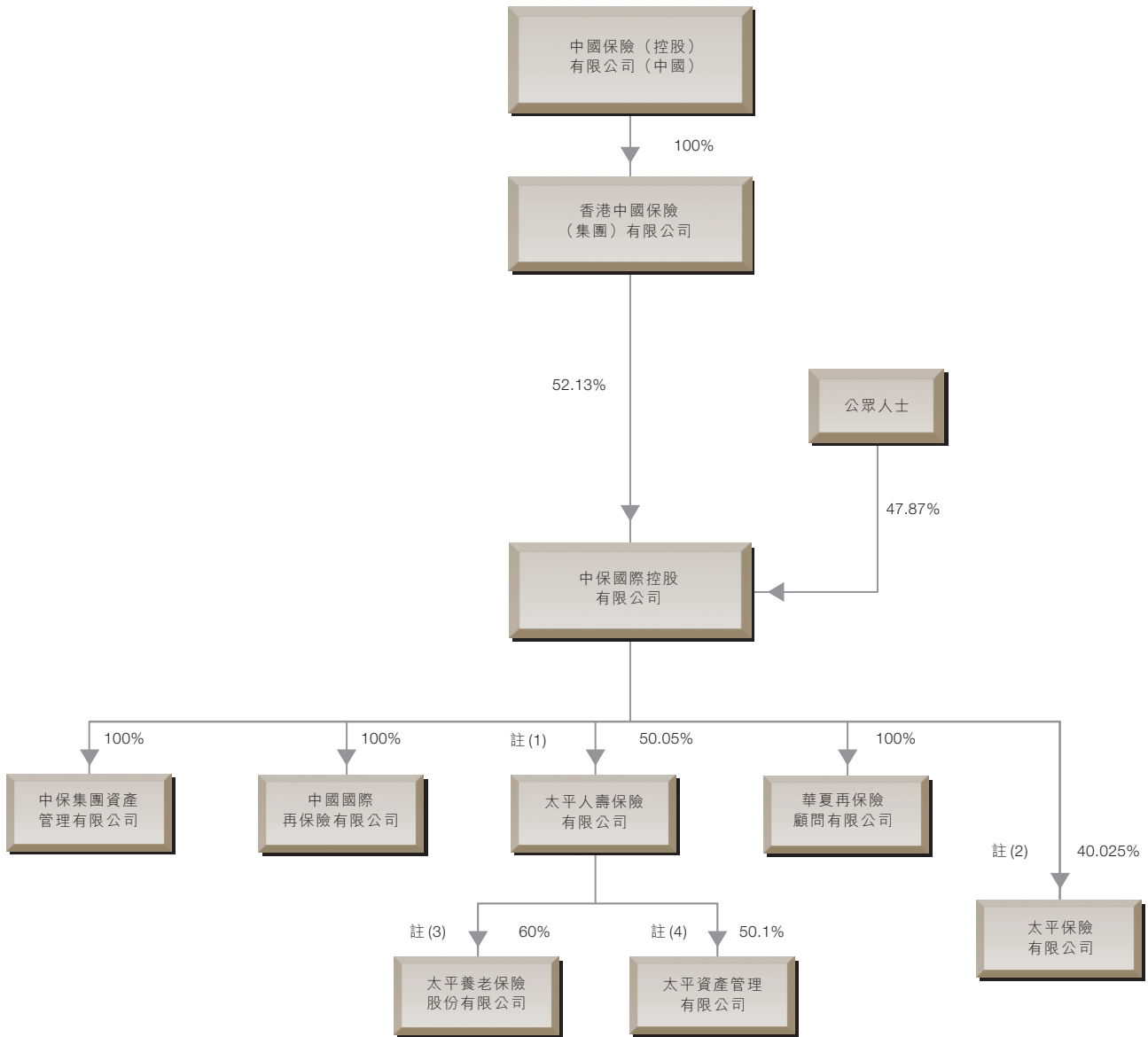
Note (2): CIHC and ICBC (Asia) hold the remaining 47.525% and 12.45% equity interest in TPI respectively.

Note (3): Together with 14% held by CIGAML, the Group's effective interest in TPP is 44.03%. TPI, CIHC and Fortis own remaining 12%, 4% and 10% equity interest in TPP respectively.

Note (4): Together with 12% held by CIGAML, the Group's effective interest in TPAM is 37.08%. TPI, CIHC and Fortis own remaining 9.9%, 20% and 8% equity interest in TPAM respectively.

(As at 26 March 2007)

# 公司架構



註(1)：中保控股及富通分別持有太平人壽其餘之25.05%及24.90%權益。

註(2)：中保控股及工銀(亞洲)分別持有太平保險其餘之47.525%及12.45%權益。

註(3)：連同中保資產管理所持有之14%，本集團在太平養老之有效權益為44.03%。太平保險、中保控股及富通分別持有太平養老其餘之12%、4%及10%權益。

註(4)：連同中保資產管理所持有之12%，本集團在太平資產管理之有效權益為37.08%。太平保險、中保控股及富通分別持有太平資產管理其餘之9.9%、20%及8%權益。

(於二零零七年三月二十六日)