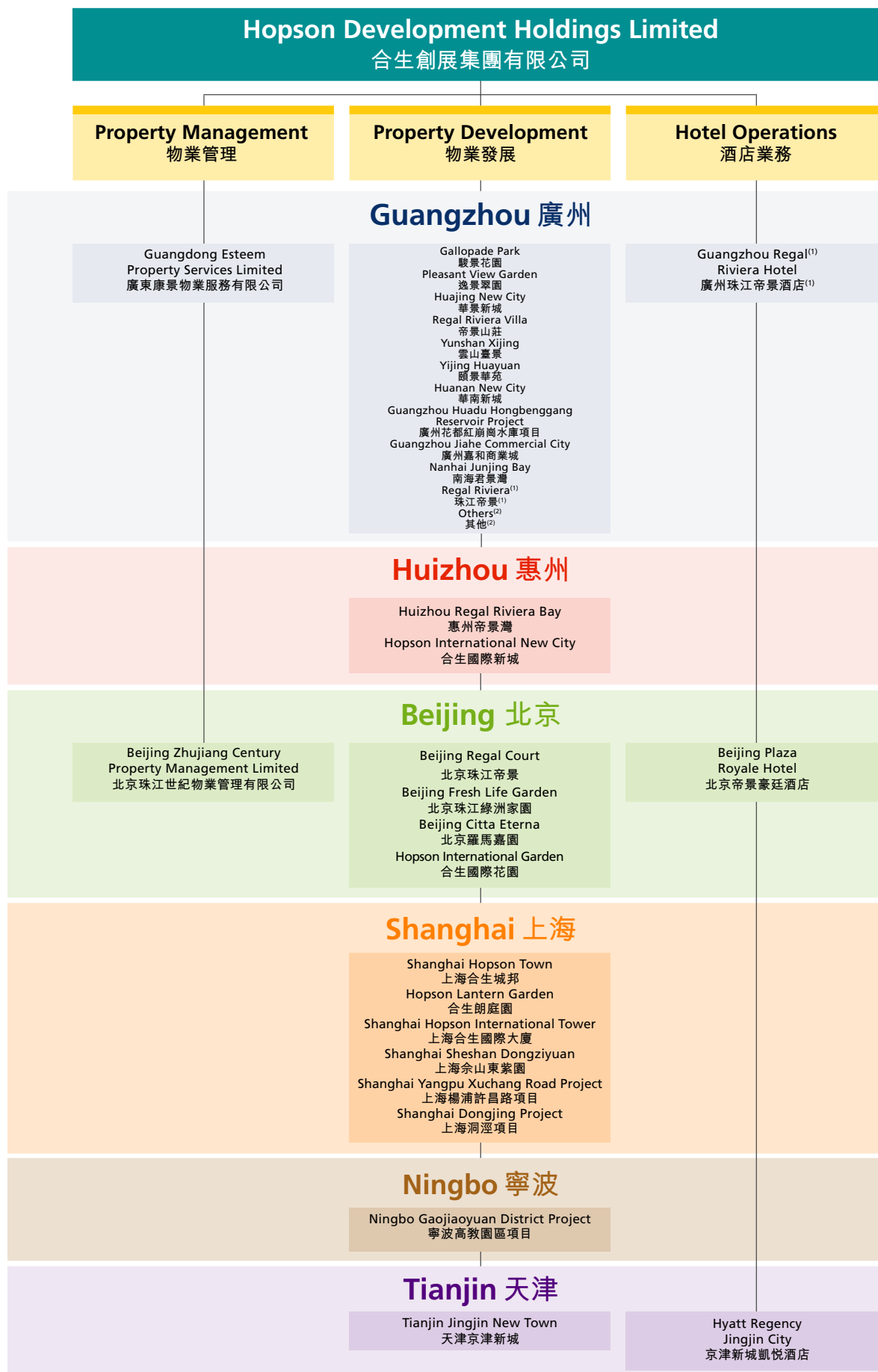


Corporate Structure

企業架構



Notes:

- (1) 69.5% owned by the Group
- (2) Others include development projects such as Regal Court, Fairview Garden, Fairview South Court and Regal Palace.

附註:

- (1) 本集團持69.5%權益
- (2) 其他包括帝景苑、愉景雅苑、愉景南苑及帝景華苑。