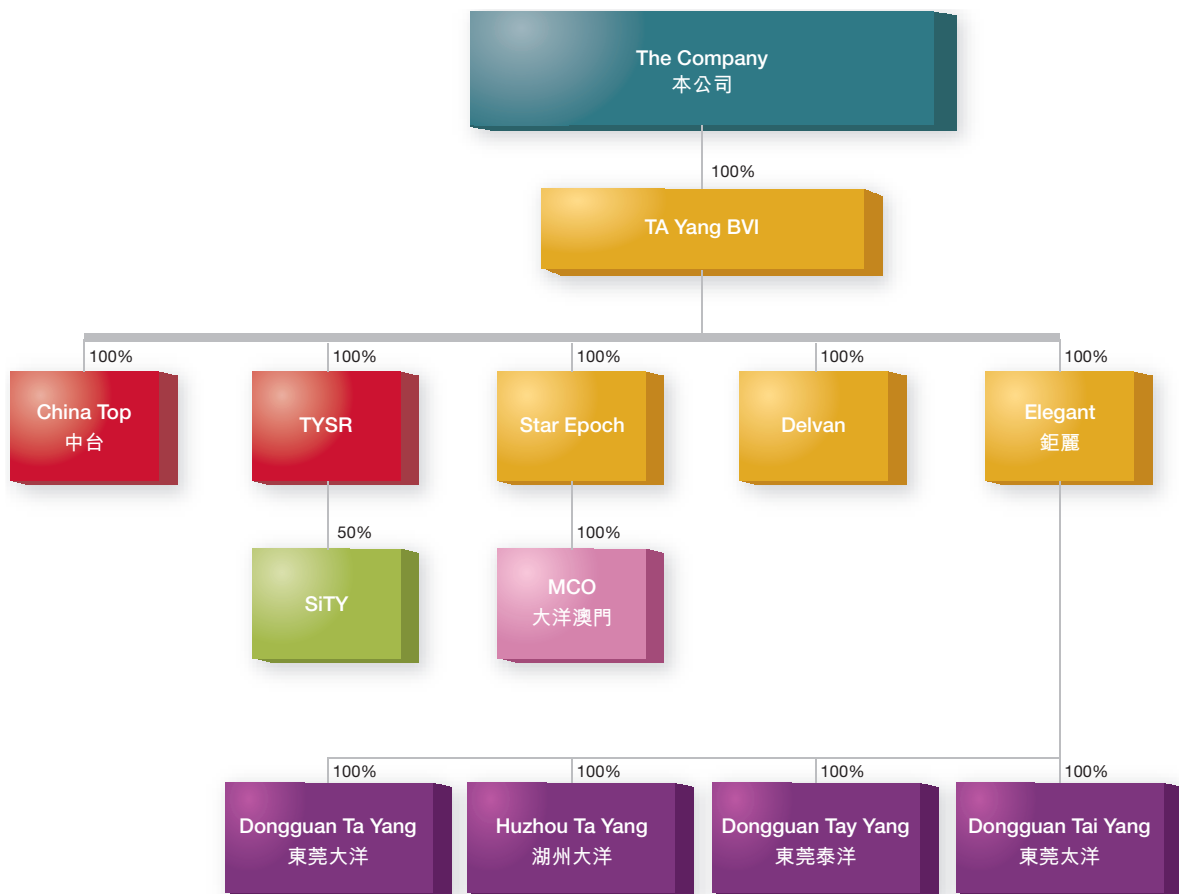


Corporate Structure

公司架構

This chart is made up to 31 July 2007.
本圖表乃截至二零零七年七月三十一日。



- Incorporated in Hong Kong 於香港註冊
- Incorporated in British Virgin Islands 於英屬處女群島註冊
- Incorporated in Germany 於德國註冊
- Incorporated in Macau 於澳門註冊
- Incorporated in The People's Republic of China 於中華人民共和國註冊

Notes: This is a simplified group chart. For the details of Group Chart, please refer to the Prospectus.
附註：此乃簡化之集團架構。公司架構詳情，請參閱售股章程。