



2015 **Environmental
Social &
Governance Report**

China National Materials Company Limited

A joint stock company incorporated in the People's Republic of China with limited liability
(Stock Code: 01893)

Contents

Corporate Profile	03
Operating Results	04
Cement equipment and engineering services	04
Cement	05
High-tech materials	05
Communication with Stakeholders	06
Environment	08
Emissions	08
1. Exhaust and greenhouse gas emission reductions	08
2. Sewage Treatment	09
3. Waste Discharge and Treatment	09
Resource Usage	10
1. Energy saving	10
2. Water conservation	12
3. Packaging material consumption	12
Environment and Natural Resources	13
1. Energy saving and environmental protection	13
2. Eliminate backward production capacity	13
3. Cement waste heat power generation	13
4. Comprehensive utilization of resources	13
5. Green mine construction	15
Social	16
(I) Employment and Labor Practices	16
A. Employment	16
B. Health and Safety	17
C. Development and Training	19
D. Labor Standards	19
(II) Operation Practices	20
A. Supply Chain Management	20
B. Product Liabilities	20
C. Anti-corruption	20
(III) Community	21
1. Social Welfare	21
2. Staff Care	22

Corporate Profile

China National Materials Company Limited (the "Company" or "we") is a joint stock company approved by the State-owned Assets Supervision and Administration Commission of the State Council and established jointly by China National Materials Group Corporation Ltd. ("Sinoma Group") and other promoters. The Company was incorporated on 31 July 2007 and was listed on the Main Board of the Stock Exchange of Hong Kong Limited on 20 December 2007.

Mainly engaged in cement equipment and engineering services, cement and high-tech materials businesses, the Company possesses series of core technologies such as glass fibre, composite materials, synthetic crystals, advanced ceramics and new dry process cement technology, and boasts pioneering research and development capabilities, strong implementation capability for commercialization of innovative technologies, successful mergers and acquisitions experience and unique business model.

The Company is the largest provider of cement equipment and engineering services globally and is a leading producer of non-metal materials in the PRC. The Company is the only enterprise in the non-metal materials industry in the PRC with a business model that integrates research and development, industrial design, equipment manufacturing, engineering and construction services and production.

The Company is committed to maintaining sustainable development for the long term and continuously creates value for all the stakeholders including shareholders, customers, employees and the society. The Company upholds its positioning as an innovative, international and value-added enterprise, striving to become the leading provider of technology, core equipment and engineering and system integration services in the global cement engineering industry as well as a prominent developer and provider of non-metal materials and related products worldwide.



Operating Results

In 2015, the Company took the initiative to adapt to the “new normal” of the economy, responded to the fierce and complex business environment proactively, put forward reform and creation continuously, as well as speeded up the adjustment in industrial structure, transformation and upgrading. The Company also made effort to avoid risks, constantly improved the quality of development and maintained the stability of production and operation. The turnover of the Company in 2015 was RMB53.259 billion, representing a year-on-year decrease of 3.66%; profit for the year attributable to the owners of the Company was RMB0.772billion, representing a year-on-year increase of 52.24%.

Cement equipment and engineering services

In 2015, the segment made greater effort to develop overseas markets and took the initiatives to develop its market in emerging economies. Arranging for the core countries of “One Belt One Road”, the segment deployed in-depth traditional markets such as Africa, the Middle East, and Southeast Asia. The new order intakes for the year amounted to RMB33.6 billion and the new overseas order intakes amounted to RMB28.5 billion, representing a year-on-year increase of 31%. The international market share of new EPC contracts executed has ranked first globally for eight consecutive years. A number of technical developments have been widely applied to the engineering projects and achieved good benefits. The second generation technology of the co-disposal of daily garbage with cement kiln has been successfully applied in the Gezhouba cement plant in Hubei Laohekou.



Cement

In the year ended 31 December 2015, confronted with unfavorable factors such as challenges of the decelerated growth of domestic fixed assets and realty investment, the overcapacity of cement, the decline of price and the negative growth in demand, the segment tightened the cost control and dedicated efforts to lower the cost and improve the efficiency. While consolidating the existing regional control, the segment sought to invest in overseas cement industry. The segment also proactively promoted the transformation and the upgrade of the cement production line and continuously enhanced the level of energy conservation and emission reduction. It actively adopted new technologies and new processes, continued to lower the energy consumption of the products, raised the standards of emissions, expedited the formation of production means which save resources and are environment-friendly, and maintained the environment of the public community. During the Reporting Period, the coal consumption of cement clinker per tonne decreased by 3.98%.

High-tech materials

In 2015, the segment captured the timing of the favorable opportunity in the market rebound to proactively expand markets, advocate innovation, improve technologies, adjust product structures, strengthened cost control and improved the quality of products continuously. The segment also constantly enhanced its competitiveness and profitability. The year-on-year growth in the sales of wind power fan blades was 46.33%, while the year-on-year growth in sales income thereof was 61.03%. The year-on-year increase in the sales of glass fiber and products was 6.83%, and the year-on-year increase in gross margin was 3.69 percentage points. The continuous increase in product quality of the solar-energy fused silica crucibles led to a year-on-year increase of 76.07% in the sale thereof and a year-on-year increase of 19.18 percentage points in the gross margin thereof.



Communication with Stakeholders

The Company adhered to the business philosophy of “Materials Bringing a Prosperous Life”. While improving management and creating values, the Company opens up various channels for the stakeholders, including investors, employees, customers, suppliers, subcontractors, regulators and the media, to participate in the production and operation of the Company, enabling the stakeholders to understand and oversee the operation of the Company and the Company to fully understand and actively respond to their opinions via continuous communication and exchanges.

In 2015, the Company actively conducted sincere communications with its investors and shareholders through general meetings, results announcement conferences, investor visits and telephone calls and non-deal road shows, enabling the investors to fully understand the operation and development status of the Company while relaying the investors’ opinions to the management of the Company. In addition, the Company made arrangements for the delivery of questionnaires to its stakeholders to learn more about their opinions and requirements regarding the Company's work in the aspects of environment, society and governance.



Communication with Stakeholders

Stakeholders	Main Objectives	Communication and Feedback
Investors	Company's operating circumstances Investors' rights	Communicating with the investors through various channels including general meetings, results announcement conferences, non-deal road shows, enquires by telephone and mail, information disclosure on website
Employees	Employees' rights Career planning Healthy and safety	Protecting the employees' rights via the labor union, and organizing activities for the employees Launching multi-level employee training Providing healthy and safe working environment
Customers	Product quality Technical and engineering services	Conducting customer surveys and continuously improving product quality Attaching importance to feedback from the customers, and providing satisfying post-project services
Suppliers and subcontractors	Fair procurement Compliance with contractual provisions	Open tendering and opposing commercial bribery Performing contracts with integrity, and commencing long-term cooperation
Regulators	Operation in compliance with law and regulations Harmonious development of economy, environment and society	Complying with laws and regulations and operating legally with integrity Proactively performing social responsibilities
Media	Information disclosure Good media relations	Maintaining an active and effective communication with the media Disclosing information timely and accurately

Environment

(I) Emissions

1. Exhaust and greenhouse gas emission reductions

In the course of the daily environment management, the Company has strictly implemented the new Environmental Protection Law, Emission Standard of Air Pollutants for Cement Industry (GB4915-2013) and other various laws and regulations, standards and regional normative documents in respect of the environment protection. The companies subordinated to the Company have strengthened their technology innovation, procuring emissions per unit of major pollutants to be lower than the current national standards. In 2015, the smoke and dust emissions of the Company were 5,600 tonnes, with a emission density of 0.09 kilogram per tonne of clinker.

(i) Preventive and treatment measures for dust pollution

The Company has adopted advanced process designs to effectively control the dust emissions in each of the dusting point during the production process of cement. Meanwhile, the dusting points such as rotary kiln's end and head with the largest exhaust emissions and dust generations were equipped with dust collectors of high collection efficiency and reliable technical performance. The dusts collected by each of dust collectors returned to their respective process systems without "secondary pollution". The density of dust emissions was in line with the emission limit requirements stipulated by the Emission Standard of Air Pollutants for Cement Industry.

(ii) Preventive and treatment measures and prevention of gaseous pollutants (NO_x and SO₂)

The Company's adoption of denitration process on the NO_x released by the cement kilns is capable of effectively lowering the emissions of NO_x during the cement production. The comprehensive denitration efficiency thereof is above 61.5%, with the average emission density in line with the national emission limit requirements stipulated by the Emission Standard of Air Pollutants for Cement Industry. The emission density of SO₂ released by the end of cement kilns can fully meet the national emission limit requirements stipulated by Emission Standard of Air Pollutants for Cement Industry.

(iii) Emission of amorphous dust

In order to effectively control the dust from escaping and causing an amorphous dust emission, equipment with less dust was adopted in the design of technical process as preventive measure to effectively reduce links generating dust. At the same time, all dust points were equipped with reliable and efficient ventilation and dust removal devices, which make the amorphous dust emissions comply with the national emission limit requirements stipulated by the Emission Standard of Air Pollutants for Cement Industry.

2. Sewage Treatment

In respect of sewage treatment, the Company has always strictly complied with the related national laws and regulations. The sewage treatment and recycling measures during the production process are mainly as follows: (i) recycling the equipment-cooling water, with a recycling rate of 95% or above; (ii) recycling the backwashing wastewater from the waste heat power generation with the concentrated salt water recycling technology, increasing the utilization rate of water resources by 5%; (iii) some companies have established sewage recycle stations to store waste water in the winter, to reuse for greening and dust control in the summer and to ensure no discharge of wastewater; (iv) using serofluid separators to separate the concrete tank washing water and sand-washing water and recycling the same after separation of precipitation; (v) using laboratory rinsing water and domestic wastewater after treatment for greening and sprinkling for dust suppression. The sewage after treatment is in line with Integrated Wastewater Discharge Standard.



3. Waste Discharge and Treatment

The Company attached great importance to the generation and disposal of hazardous and non-hazardous waste. The waste produced during 2015 was effectively disposed of. For example, among the waste raw materials, packaging materials and waste produced during the production of glass fiber products of Sinoma Science & Technology, small amount of hazardous waste was generated from chemical raw materials such as resins and paints, which was all treated by delegated qualified institutions. The CTG sorted its solid waste (including plastic, paper and waste woods, etc.) and properly stored the recyclable solid waste so as to facilitate the recycling of the same. RMB0.5 million was invested in the construction of a garbage compression station. After compression processing, the garbage was sent to the incineration power plant of Tai'an City for comprehensive utilization. Sinoma Jinjing has built a temporary storage warehouse for hazardous waste to store the waste mineral oil, with a temporary storage capacity of 10 tonnes. Inorganic sludge was dealt with by qualified transport companies by way of outward transport and landfill.

(II) Resource Usage

1. Energy saving

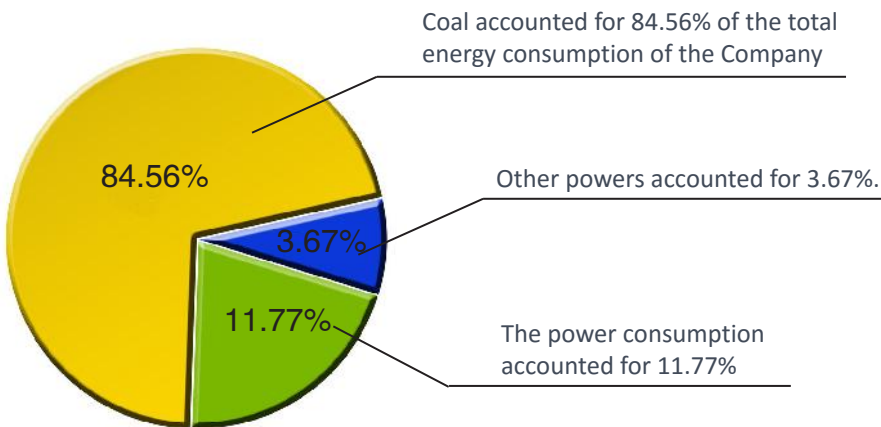
The Company has included energy saving and emission reduction indicators into the scope of annual assessment. The accounting diameter of various indicators was regulated and unified by Measures of Benchmarking Management, which provides practicable comparative conditions for benchmarking works. The subsidiaries and branch companies were compared and monitored with reference to economic indicators, technological consumption indicators, quality indicators and other operational indicators, so as to comprehensively enhance production and operation management, to improve economic efficiency and to reduce consumption.

Some cement companies have established a series of management systems including energy procurement, energy and financial accounting, energy production consumption, energy measurement statistics, energy consumption quotas, assessment and incentive. With the advanced international and domestic indicators as benchmarks, they carried out comprehensive energy efficiency benchmarking works, which resulted in the constant optimization of various energy consumption indicators and maintained the major energy consumption indicators under the national limits. Through the establishment of energy management systems, the division of labors and posts of related employees in the enterprise energy management systems were specified. Standardized technical documents were developed in respect of equipment, technology, operation and function, maintenance and other aspects, enabling the energy management thereof to set off towards systematism.

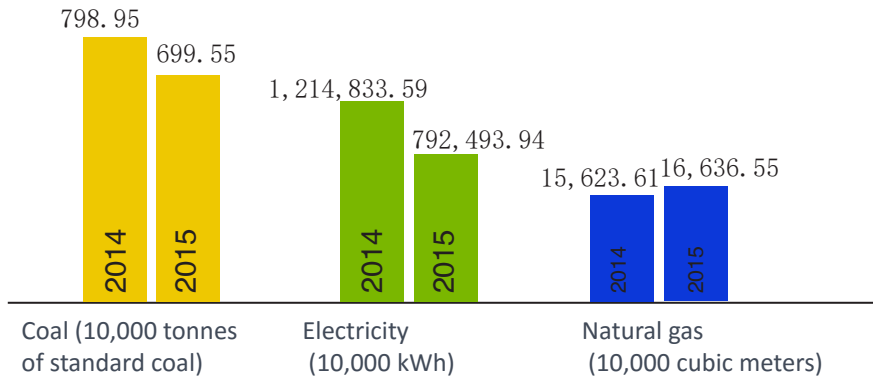
The new production line of the CTG adopted new technology for the structure design of kilns, increasing the melting rate by 25% and reducing energy consumption by 40%. By improving the design of the large flow drain board and introducing the single plate of bushing with ceramic stiffener, the power consumption was reduced by 17.6%. At the same time, by optimizing the design of furnace structure of the drying furnace and the methods of heat preservation, the energy consumption of the drying process was reduced by 60% on a year-on-year basis.



During 2015, the major energy consumed by the Company was coal, accounting for 84.56% of the total energy consumption of the Company. The power consumption accounted for 11.77% and other powers accounted for 3.67%.



The Company's major energy consumption amount



2. Water conservation

Each subsidiaries in the cement sector continued to take active measures for water conservation. They recycled the cooling water for industrial use back to the production system to reduce the consumption amount of fresh water. In particular, they used the air cooling technology during the residual heat electricity generation, to effectively solve the water shortage problem and the water consumption during residual heat electricity generation, which effectively released the restriction of water shortage on residual heat electricity generation and resulted in the recycling rate of production water reaching up to 90%. The production water of many enterprises come from the river. The production facilities and the residual heat electricity generation would be affected by the muddy river, which would make a severe fouling and corrosion in the water tubes. To eliminate these potential hazards, chemical medicines need to be increased, thus increasing the production cost. To reduce the amount of water consumed during production, the Company regularly checked the circulating water supply network to prevent leaking, regularly cleaned the circulating water sedimentation pond, strengthened the ventilation of the facilities and reduced the cooling water in circulation.



Cooling water circulation system

3. Packaging material consumption

The packaging materials consumed by the enterprises subordinate to the Company during 2015 were mainly packaging bag, cartons, wooden boxes and so on. The total amount of packaging bags assumed for cement products was approximately 44,000 tonnes, with each tonne of cement taking up 20 packaging bags and consuming 1.4 kilograms of packaging materials on average. The total amount of packaging materials consumed for fiberglass products was 89.745 million tonnes, with 166.9 tonnes of packaging materials per unit of product.

(III) Environment and Natural Resources

1. Energy saving and environmental protection

With the goal of reducing energy and resource consumption and pollutant emissions, the Company accelerated the transformation of development mode, vigorously promoted the application of advanced energy saving and emission reducing technologies, processes and equipment, boosted the elimination of backward production capacity and outdated equipment, strengthened the comprehensive utilization of resources and developed the circular economy in 2015. The treatment of pollutant emissions was accelerated, the transformation of denitrification, desulfurization and wastewater treatment was strengthened, and the emission of sulfur dioxide, nitrogen oxides and COD was reduced.



2. Eliminate backward production capacity

The Company strictly complied with the related national policy for eliminating the backward production capacity, adhered to the environmental-friendly strategy and eliminated backward production lines. The successful implementation of eliminating projects played a leading and exemplary role in enhancing the concentration of the cement industry and the industrial upgrading of new processes, new technologies and new equipment. At the same time, the above measures lowered the Company's energy consumption, benefiting synergies of the market, the supply and demand balance and the formation of the normal price mechanism, and safeguarded reasonable profit for the Company and the industry.

3. Cement waste heat power generation

The production lines above 2,000 tonnes of the Company were equipped with the waste heat power generation projects, with a total installed capacity of waste heat power generation of 435.5mw. In 2015, the total power generated from waste heat amounted to 1,718 million kwh, equivalent to reduction of 1.5419 million tonnes of carbon dioxide.

4. Comprehensive utilization of resources

The Company constantly explored and innovated in respect of comprehensive utilization of resources. Our subsidiaries in the cement sector fully utilized fly ashes, calcium carbide slags and other waste and reduced the consumption of mine resources, saved energy, reduced emissions, and alleviated secondary pollution to the environment.



The project of co-processing of 500 tonnes household waste per day with cement kilns of the Gezhouba Dam in Laohekou City, Hubei Province, constructed by Sinoma International Environmental Engineering (Beijing) Co., Ltd. by way of EPC, has been put into operation. Project Laohekou is the demonstration project of household waste in central China. It adopted the second-generation co-processing technology based on and upgraded from the technology in the demonstration line of co-processing of household waste in Liyang of Sinoma International, and is capable to process 500 tonnes of household waste per day from Laohekou, Danjiang and Gucheng. It not only eliminated pollution problems caused by the urban household waste from Lanhekou and its surrounding area, ensuring the household waste disposal principles of “harmless, minimization, reclamation”, but also benefited the construction of “One District Two Cities” in Lanhekou and the circular economic development in the surrounding area, improving the urban environment and generating social and environment benefits.



5. Green mine construction

The Company constantly stuck to the concept of green mine construction throughout the whole process of mine development and utilization. With the purpose of optimizing the mining design and production organization and improving the level of comprehensive utilization of resources, we exploited the mines in accordance with the requirements of the intensification of resource use, scientific mining methods, standardization of enterprise management, environmental-friendly production process and ecological mining environment, so as to achieve the harmonious development of resources development and ecological and environmental protection, to conserve resources and to protect the environment. Amid the process of mine construction and production, we always adhered to the principles of synergy between resources development and ecological and environmental protection with the purpose of constructing green mines and the principle of “mining with land reclamation”, aiming at shortening the treatment recovery period and achieving the goal of ecological rehabilitation.



Social

(I) Employment and Labor Practices

A. Employment

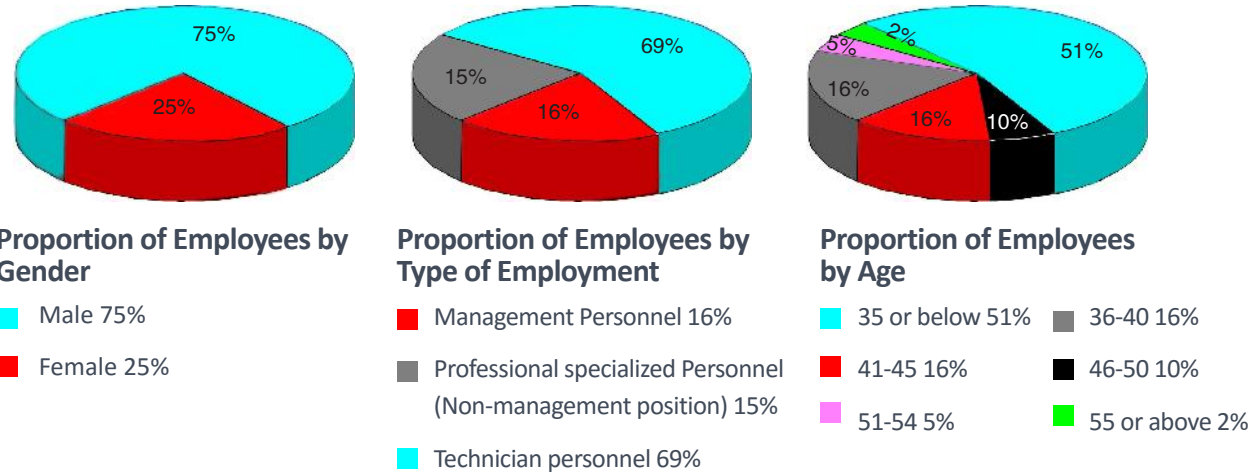
The Company continuously establishes and improves the administrative measures on remuneration, insisted on the administrative principle on remuneration of “allocation based on labor input, giving priority to efficiency while giving consideration to fairness”, implemented performance appraisal for all employees, and has established a remuneration system based on position and capacity with performance as the core. The performance wage of production worker was determined in accordance with factors such as the quantity and quality of the work completed; The performance wage of other production management and management departments was determined by each department comprehensively based on factors such as personal work performance, capacity and attitude.

The Company strictly complied with relevant national laws and regulations and formulated “Measures for Staff Management”, “Implementation Rules for Full Implementation of the Employment Contract System”, “Measures for Employees Remuneration Management”, “Recruitment Management System for Staff”, “Implementation Measures for Paid Annual Leave for Staff” and other regulatory documents. The Company regulated staff recruitment, staff selection and appointment, appraisal and evaluation, incentives and constraints, mobility and deployment, assessment, vacation and retirement by formulating regulations and systems. The Company enforced national working hours and scheduling system by arranging the annual leave, casual leave, sick leave, home leave, martial leave, maternal leave and all kinds of official holidays for staff without arranging overtime work, and paid overtime salary for overtime work on holidays according to the regulations.

The Company arranges straining or individual counseling for staff with poor performance in appraisal, and demotes or transfers staff with continuous poor performance in appraisal. In the event that the staff’s performance appraisal still failed to reach the standards, the Company will terminate the employment contract with staff through negotiation and pay compensation pursuant to laws.

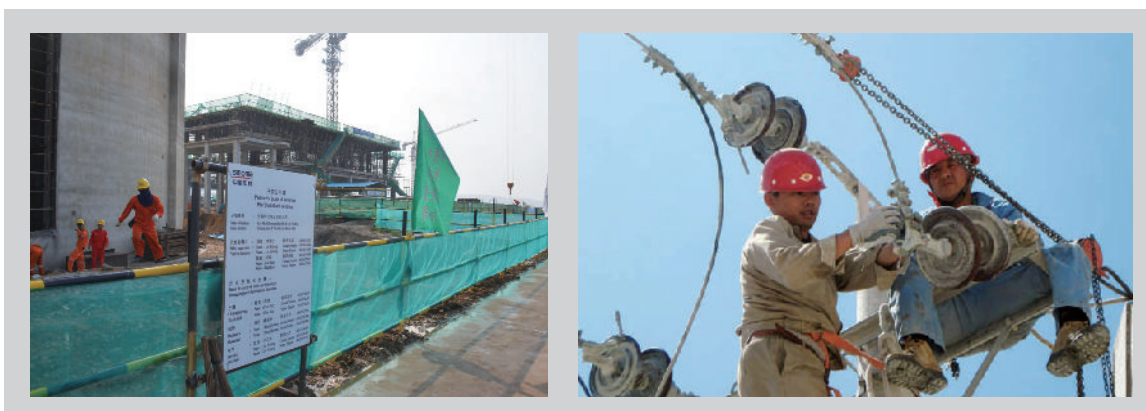
Strictly complied with the national and regional laws, regulations and policies regarding the social security, the Company paid social insurances and housing fund in a timely manner for all the staff.

Proportion of Employees by Gender, Type of Employment and Age in 2015

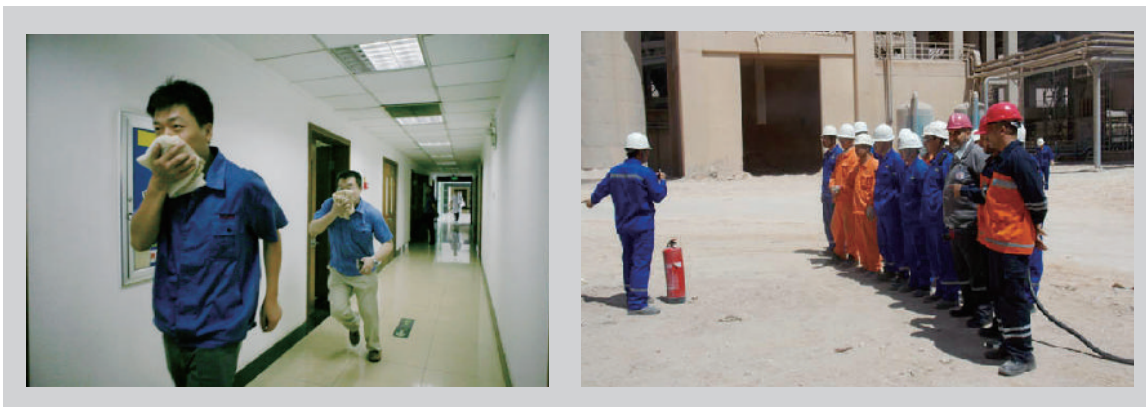


B. Health and Safety

In 2015, the Company did not encounter any major or above accidents or new cases of occupational disease, achieving 100% in occupational hazards alert rate, testing and evaluation rate and occupational health examination rate. We have yielded good results in controlling and combating safety hazards in relation to production as well as occupational diseases, which strongly guaranteed the achievement of our operational objectives.



In 2015, the Company fully fulfilled its principal responsibility of safe operations and prevention of occupational diseases, earnestly implemented relevant laws and regulations including the “Occupational Disease Prevention Law” and the “Production Safety Law”, fully implemented the safety production principle of “safety-foremost with prevention-oriented and comprehensive treatment”, strictly enforced the “Provisions of Five Implementation and Five Putting in Place” on production safety responsibility, established and improved the corporate production safety responsibility system of “Party and Government Share the Same Responsibility, One Position with Dual Responsibility and Centralized Management”; The Company diligently implemented systems including “Measures for the Administration of Safety Production”, “Safe Production Responsibility System”, “Provisions on Interviews regarding Production Safety and Environment Pollution Incidents”, “Provisions on Responsibility-Investigation regarding Production Safety and Environment Pollution Incidents”



In 2015, on the basis of formulating detailed plan and contents for inspection, the Company, in accordance with the principle of “full coverage, zero tolerance”, went down to the production and operation sites and enhanced the investigation and treatment of potential safety issues. We urged each subsidiary to conduct investigation on special items of production safety and occupational health and to investigate and treat potential safety issues mainly targeted on the safety and occupational health of the production sites, mines, construction projects and commercial concretes. 10,364 supervisory inspections have been conducted and 96,101 potential safety issues have been tackled during the year. In particular, listed supervisions were conducted on major potential problems of some enterprises, and those production lines with major potential problems and without safety and environmental-protection conditions were decisively shut down.



Information in relation to Staff Health and Safety in 2015

Indicator		2015	2014
Investment in safety production (RMB 100 million)		2.94	3.05
Number of staff members receiving training in safety production	General training	335,172	More than 0.15 million person-time
	Special training	245,600	More than 0.26 million person-time
Number of work-related deaths (persons)		2	3
Proportion of work-related deaths to total number of employees (‰)		0.03	0.05
Number of working days lost due to work-related injury (days)		486	215

C. Development and Training

The Company formulated the “Measures for Staff Training Management”. The Company formulates training plans and budgets at the beginning of each year and trains each level of management personnel, technicians and production workers in a tiered and classified way based on the Company’s annual operation assignments, staff’s career duties and required qualities. In the Level II staff training, the Company focused on the dynamic following-up management on the implementation of training plans, actively collected and sorted training materials and established training files, and checked the achievement of training purposes through assessment on the training performance so as to objectively evaluate the results of training organizers' work and the courses.



D. Labor Standards

The Company’s staff recruitment management measures clearly stimulated the staff’s age. Review of applicant’s identity information is required during the recruitment process, and child labor is strictly prohibited. The Company provides its staff with a safe and health working environment, labor protection, reasonable remuneration and various welfare, and prohibits forced labor. The labor union of the Company actively played its role to safeguard its staff’s interests.



(II) Operation Practices

A. Supply Chain Management

Some subsidiaries have formulated the “Administration Measures on Procurement”, and have established the platform for procurement and trading for centralized management of suppliers, track of the supplier’s service during the procurement as well as supervision and evaluation on the suppliers. The supplier’s qualification, supply capability, advance capability, quality and quantity of goods delivery, fulfillment of contract, after-sales service, operation in good faith and others are evaluated. Whether the supplier is qualified is determined based on the evaluation results, and those suppliers failed to meet the requirements ultimately will be disqualified.

B. Product Liabilities

1. Safeguarding and protecting intellectual property rights

The Company strictly complied with the laws and regulations including “Trademark Law”, “Patent Law”, “Copyright Law”, “Anti-Unfair Competition Law” and “Foreign Trade Law”, as well as the “Administration and Protection Measures on Intellectual Property Rights of China National Materials Company Limited”. Led by the concept of high-tech enterprises, the Company continuously enhanced its development, utilization and protection of intellectual property rights, made full use of proprietary intellectual property rights when expanding domestic and overseas market as well as adjusting its industrial structure, so as to improve the core competitiveness of the Company.

2. Quality inspection and product recall

The Company pays highly attention to the quality of products. Each subsidiary has formulated and enforced the systems and relevant rules on product quality inspection, and has achieved relevant product quality certifications. Appearance and indicator inspections are conducted on the products during the production process in accordance with relevant regulations before storage. Substandard products will be processed according to the relevant provisions. Inspection will also be conducted on the products pursuant to the national standards before delivery from storage.

3. Product and service complaints

In 2015, the Company did not encounter any material litigation or complaint due to product quality or service.

C. Anti-corruption

In 2015, no litigation on corruption, bribery, blackmail, fraud or money laundering occurred in the Company. Staff could report various kinds of breaches or violations committed by the personnel of the Company and its subordinate enterprises, including breach of duty, malfeasance, abuse of power, acceptance of bribes and misappropriation of the company’s properties, via letters, phone or meetings to the disciplinary and supervisory authority, which would handle such cases after investigation and verification. The disciplinary and supervisory authority of the Company enhanced the accountability supervision and assessment. Based on the independent assessment of each subordinate unit, the Company selected representative companies for on-site assessment and reported the assessment results thereof within the Company’s system.

(III) Community

1. Social Welfare

The Company practically fulfills its social responsibility, proactively contributes to the society and partakes in social welfare activities. In 2015, the Company made a total donation of RMB 6.99 million to support social welfare and education.



Sinoma (ShangRao) Machinery Limited Company visited Jianshe Village, Zihu Town, Yushan County during the Spring Festival, and donated RMB30,000 to the poor villagers.



The Burmese EPC project department of Sinoma (Handan) Construction Co., Ltd. donated solar panels and lighting tools to local schools to satisfy the students' learning and living requirements in the evening.



The Malaysian Hume Phase II project department of Tianjin Cement Industry Design & Research Institute Co., Ltd. participated the local flood-relief activities. The project department donated rice and cooking oil to the disaster-stricken area.

2. Staff Care

The Company pays attention to the staff care. Through changing chairs, sending out birthday cards, organizing various activities such as lectures, mountain-climbing and badminton competitions for the staff, the Company promoted the staff cohesiveness, helped the staff to get relaxed during breaks, invigorated the staff's lives and hence created a corporate culture featuring Sinoma characteristics.



To enrich the staff's sports and culture life, facilitate construction of corporate culture, establish a secure, harmonious, and dynamic home for the staff, the Company participated the table tennis competition organized by Sinoma Group.



Sinoma-Tangshan Heavy Machinery Co., Ltd. conducted outward bound themed as "Teamwork, Coordination and Devotion", improving the cohesiveness and competitiveness of the whole team.



Beijing Composite Materials Co., Ltd. conducted the youth quality development activities, helping the young staff to realize the importance of teamwork, communication, trust and encouragement during the development activities.



www.sinoma-ltd.cn

Address: 11 Beishuncheng Street, Xizhimennei, Xicheng District, Beijing
Tel: (8610) 82228850 Fax: (8610) 82228800 Zip code: 100035