

ACCOMPLISHMENTS AND RESULTS 2016

04	Company at a Glance
08	2016 Highlights
12	Financial Highlights
13	Non-Financial Highlights
14	Financial Review Summary
16	Ten Year Operating Statistics
17	Ten Year Financial Summary
18	Letter from the Chairman
22	CEO's Strategic Review
50	Financial Review



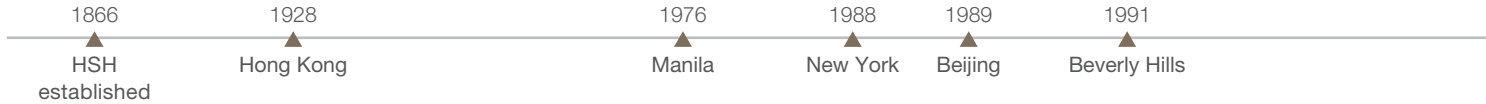
HERITAGE



A NEW CHAPTER

COMPANY AT A GLANCE

HOTELS



THE PENINSULA HONG KONG



THE PENINSULA SHANGHAI



THE PENINSULA BEIJING



THE PENINSULA TOKYO



THE PENINSULA BANGKOK



THE PENINSULA MANILA



* The Group owns 100% economic interest of The Peninsula Beijing with a reversionary interest to the PRC partner at the end of the co-operating joint venture period



THE PENINSULA NEW YORK



Rooms: 235 | Ownership: 100%

THE PENINSULA CHICAGO



Rooms: 339 | Ownership: 100%

The Hongkong and Shanghai Hotels, Limited (HSH) was incorporated in 1866 and is listed on the Hong Kong Stock Exchange (00045). HSH is the holding company of a Group which is engaged in the ownership, development and management of prestigious hotels and commercial and residential properties in key locations in Asia, the United States and Europe, as well as the provision of tourism and leisure, club management and other services.

HSH businesses are grouped under three divisions: hotels, commercial properties and clubs and services.

THE PENINSULA BEVERLY HILLS



Rooms: 195 | Ownership: 20%

THE PENINSULA PARIS



Rooms: 200 | Ownership: 20%

COMMERCIAL PROPERTIES



Residential

**THE REPULSE BAY,
HONG KONG**



GFA: 995,546 sq. ft. | Ownership: 100%

**THE LANDMARK,
HO CHI MINH CITY, VIETNAM**



GFA: 69,750 sq. ft. | Ownership: 70%**

**THE PEAK TOWER,
HONG KONG**



GFA: 116,768 sq. ft. | Ownership: 100%

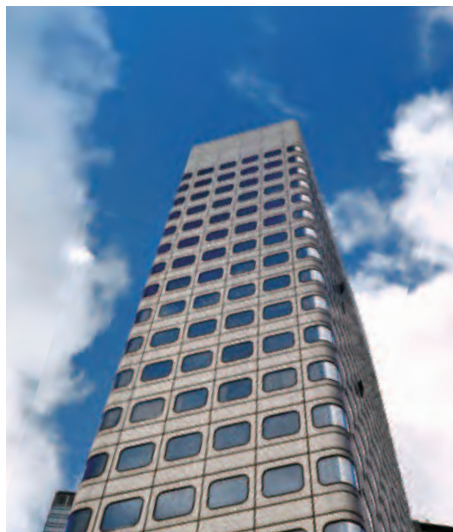
Office

**THE PENINSULA OFFICE TOWER,
HONG KONG**



GFA: 75,082 sq. ft. | Ownership: 100%

**ST. JOHN'S BUILDING,
HONG KONG**



GFA: 71,400 sq. ft. | Ownership: 100%

**THE LANDMARK,
HO CHI MINH CITY, VIETNAM**



GFA: 106,153 sq. ft. | Ownership: 70%**

** The Group owns 50% economic interest of The Landmark with a reversionary interest to the Vietnamese partner at the end of the joint venture period



**THE REPULSE BAY ARCADE,
HONG KONG**



GFA: 62,909 sq. ft. | Ownership: 100%

**1-5 GROSVENOR PLACE,
LONDON, UNITED KINGDOM**



GFA: 246,192 sq. ft. | Ownership: 100%

**21 AVENUE KLÉBER,
PARIS, FRANCE**



GFA: 43,163 sq. ft. | Ownership: 100%

CLUBS AND SERVICES

**THE PEAK TRAM,
HONG KONG**



Ownership: 100%

**THAI COUNTRY CLUB,
BANGKOK, THAILAND**



Ownership: 75%

**QUAIL LODGE & GOLF CLUB,
CARMEL, USA**



Ownership: 100%

**PENINSULA CLUBS AND
CONSULTANCY SERVICES**



Ownership: 100%

**PENINSULA
MERCHANDISING**



Ownership: 100%

**TAI PAN LAUNDRY,
HONG KONG**



Ownership: 100%