

PERFORMANCE HIGHLIGHTS

Financials

	2019	2018
Revenue	HK\$10,739 million	HK\$11,612 million
Distributable Income	HK\$2,830 million	HK\$3,538 million
Total Distribution per SSU	HK 32.03 cents	HK 40.04 cents
Interim Distribution per SSU	HK 15.94 cents	HK 19.92 cents
Final Distribution per SSU	HK 16.09 cents	HK 20.12 cents
Total Assets	HK\$109,717 million	HK\$107,894 million
Net Debt-to-Net Total Capital Ratio	47%	46%
S&P Credit Rating	A-/ Stable	A-/ Stable
HK Electric		
HK Electric Investments Limited	A-/ Stable	A-/ Stable

Operations

58

Number of Renewable Energy Installations
Joining Feed-in Tariff Scheme

3,237^{MW}
Generation Capacity



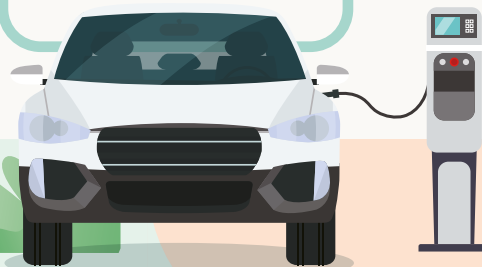
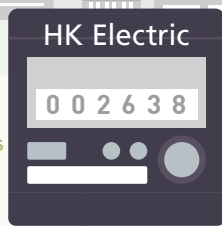
581,000

Number of Customers

>99.999%
Supply Reliability



10,519 millions
of kWh
Units Sold



6,536 km
Network Length

12,314
Number of Free Charging
Operations Provided