

# Performance Highlights



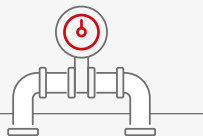
19,083,000

Number of Customers



1,731 MW

Generation Capacity -  
Renewable Energy/  
Energy-from-waste



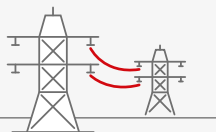
112,300 km

Gas/Oil Pipeline Length



3,968 MW

Generation Capacity -  
Gas-fired



399,100 km

Power Network Length



4,607 MW

Generation Capacity -  
Coal/Oil-fired

## Financials

	2019 HK\$	2018 HK\$
Profit attributable to shareholders (million)	7,131	7,636
Earnings per share	3.34	3.58
Dividends per share	2.80	2.80
Total equity (million)	85,492	83,557
Cash on hand (million)	4,876	5,229
Debts (million)	3,319	3,437
Net debt to net total capital ratio	Net Cash	Net Cash
S&P credit rating	A / Stable	A / Stable

### 2019 Profit Contribution by Reportable Business Segment

