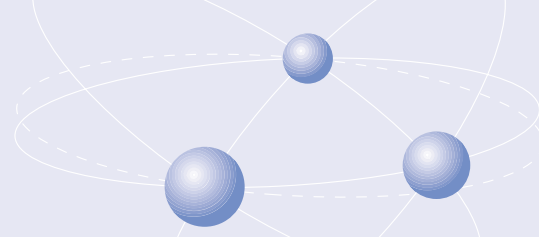


FINANCIAL SUMMARY

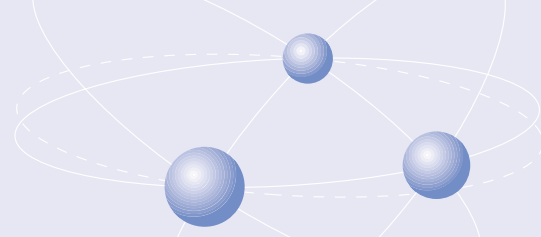
(Amounts expressed in Hong Kong dollars)



	Consolidated income statement For the years ended 31st March,				
	1997	1998	1999	2000	2001
	\$'000	\$'000	\$'000	\$'000	\$'000
Turnover	518,466	499,287	605,510	705,971	832,782
Cost of installation and cost of sales	(458,734)	(431,814)	(528,337)	(609,676)	(712,885)
Gross profit	59,732	67,473	77,173	96,295	119,897
Other revenues	1,794	2,584	4,318	8,912	5,845
General and administrative expenses	(39,638)	(45,988)	(55,776)	(64,093)	(93,320)
Provision for obsolete stocks	—	—	—	—	(2,922)
Provision for impairment in value of fixed assets	—	—	—	—	(7,972)
Operating profit	21,888	24,069	25,715	41,114	21,528
Finance costs	(3,777)	(4,369)	(4,262)	(3,562)	(4,645)
Realised loss on disposal of other investments	—	—	—	—	(13,202)
Provision for impairment in value of investment securities	—	—	—	—	(38,298)
Profit (Loss) before share of profit (loss) of associated companies and taxation	18,111	19,700	21,453	37,552	(34,617)
Share of profit (loss) of associated companies	(18)	(9)	4	(158)	(19)
Profit (Loss) before taxation	18,093	19,691	21,457	37,394	(34,636)
Taxation	(2,557)	(2,298)	(3,399)	(6,267)	(7,601)
Profit (Loss) after taxation	15,536	17,393	18,058	31,127	(42,237)
Minority interests	(93)	(390)	(33)	901	6,818
Profit (Loss) attributable to shareholders	<u>15,443</u>	<u>17,003</u>	<u>18,025</u>	<u>32,028</u>	<u>(35,419)</u>

FINANCIAL SUMMARY (Continued)

(Amounts expressed in Hong Kong dollars)



Consolidated balance sheets					
As at 31st March,					
	1997	1998	1999	2000	2001
	\$'000	\$'000	\$'000	\$'000	\$'000
ASSETS					
Non-current assets					
Fixed assets	26,279	24,431	23,576	25,074	33,760
Investments in associated companies	—	13	34	9	9,307
Investments	—	—	—	47,445	17,461
	<u>26,279</u>	<u>24,444</u>	<u>23,610</u>	<u>72,528</u>	<u>60,528</u>
Current assets					
Gross amount due from customers for contract work	43,300	45,104	23,488	62,706	76,575
Stocks	3,974	5,058	5,033	6,299	6,576
Accounts receivable	156,440	154,508	136,343	128,405	185,642
Retention money receivable	44,450	35,555	40,085	45,587	34,574
Prepayments, deposits and other assets	2,960	2,867	2,136	1,423	5,685
Prepaid tax	440	704	1,253	1,077	176
Pledged bank deposits	26,800	26,800	26,800	26,800	26,800
Cash and bank deposits	22,317	551	81,271	108,827	51,306
	<u>300,681</u>	<u>271,147</u>	<u>316,409</u>	<u>381,124</u>	<u>387,334</u>
Current liabilities					
Gross amount due to customers for contract work	(52,877)	(26,452)	(51,622)	(83,450)	(79,799)
Accounts payable and accruals	(68,083)	(62,406)	(66,422)	(80,515)	(79,785)
Retention money payable	(28,537)	(28,582)	(30,704)	(32,842)	(26,742)
Bills payable	(42,837)	(21,943)	(33,729)	(42,357)	(93,158)
Tax payable	(3,107)	(476)	(816)	(6,090)	(2,013)
Current portion of obligations under finance leases	(240)	(171)	(75)	(400)	(400)
Bank overdrafts and short-term loans	(23,030)	(30,905)	(14,940)	(1,023)	(29,221)
Dividend payable	(3,250)	(3,254)	(4,912)	(6,789)	—
	<u>(221,961)</u>	<u>(174,189)</u>	<u>(203,220)</u>	<u>(253,466)</u>	<u>(311,118)</u>
Net current assets	<u>78,720</u>	<u>96,958</u>	<u>113,189</u>	<u>127,658</u>	<u>76,216</u>
Total assets less current liabilities	<u>104,999</u>	<u>121,402</u>	<u>136,799</u>	<u>200,186</u>	<u>136,744</u>
Non-current liabilities					
Loans from minority shareholders of subsidiaries	—	—	—	—	(11,601)
Non-current portion of obligations under finance leases	(246)	(75)	—	(467)	(67)
Deferred taxation	—	(911)	(3,231)	(2,557)	(2,226)
	<u>(246)</u>	<u>(986)</u>	<u>(3,231)</u>	<u>(3,024)</u>	<u>(13,894)</u>
Minority interests	<u>(766)</u>	<u>(698)</u>	<u>(731)</u>	<u>(2,830)</u>	<u>(430)</u>
NET ASSETS	<u>103,987</u>	<u>119,718</u>	<u>132,837</u>	<u>194,332</u>	<u>122,420</u>
<i>Representing:</i>					
Share capital	31,331	32,504	32,504	38,737	38,702
Reserves	72,656	87,214	100,333	155,595	83,718
Shareholders' equity	<u>103,987</u>	<u>119,718</u>	<u>132,837</u>	<u>194,332</u>	<u>122,420</u>