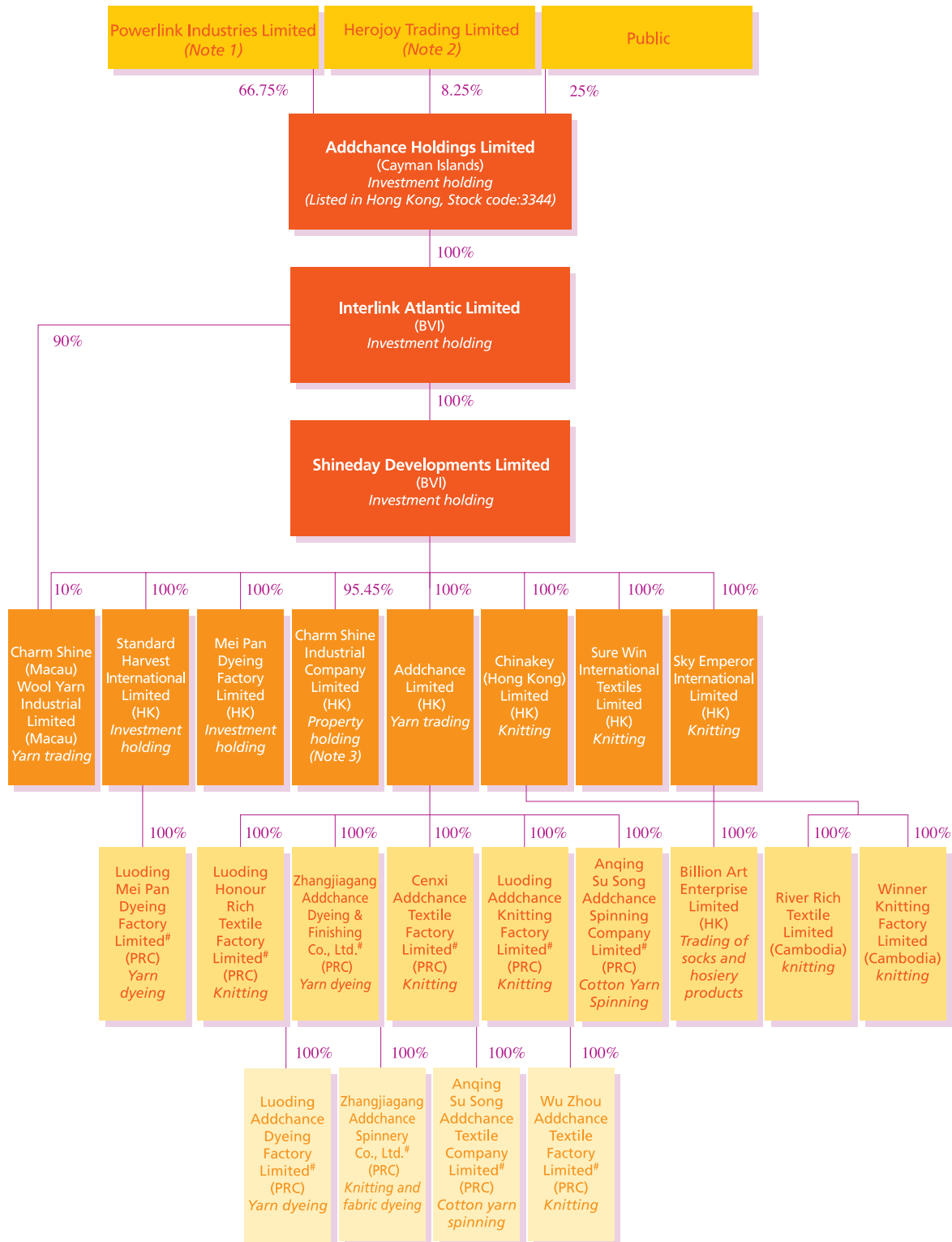


CORPORATE STRUCTURE AS AT 31ST DECEMBER, 2006



for identification purpose only

CORPORATE STRUCTURE AS AT 31ST DECEMBER, 2006

Notes:

1. Powerlink Industries Limited is ultimately beneficially owned by GZ Trust Corporation in the capacity as trustee of The CK Sung's Trust, a discretionary family trust set up by Dr. Sung Chung Kwun ("Dr. Sung") as founder (as defined in the Securities and Futures Ordinance), the discretionary objects of which are Mrs. Sung (Ms. Tse Mui Chu, the spouse of Dr. Sung), Ms. Sung Lam Ching and Mr. Sung Kim Ping, one of the sons of Dr. Sung.
2. Herojoy Trading Limited is ultimately beneficially owned by GZ Trust Corporation in the capacity as trustee of The Addchance Employee' Trust, a discretionary trust set up by Dr. Sung as settlor and founder (as defined in the Securities and Futures Ordinance) for the benefit of employees of the Group, the discretionary objects of which are the employees of the Group from time to time including Mr. Wong Chiu Hong, Ms. Mok Pui Mei and Mr. Ip Siu Lam but excluding Ms. Sung Lam Ching.
3. The remaining 4.55% interest in Charm Shine Industrial Company Limited is owned by Mr. Sung Chung Man, the youngest brother of Dr. Sung.