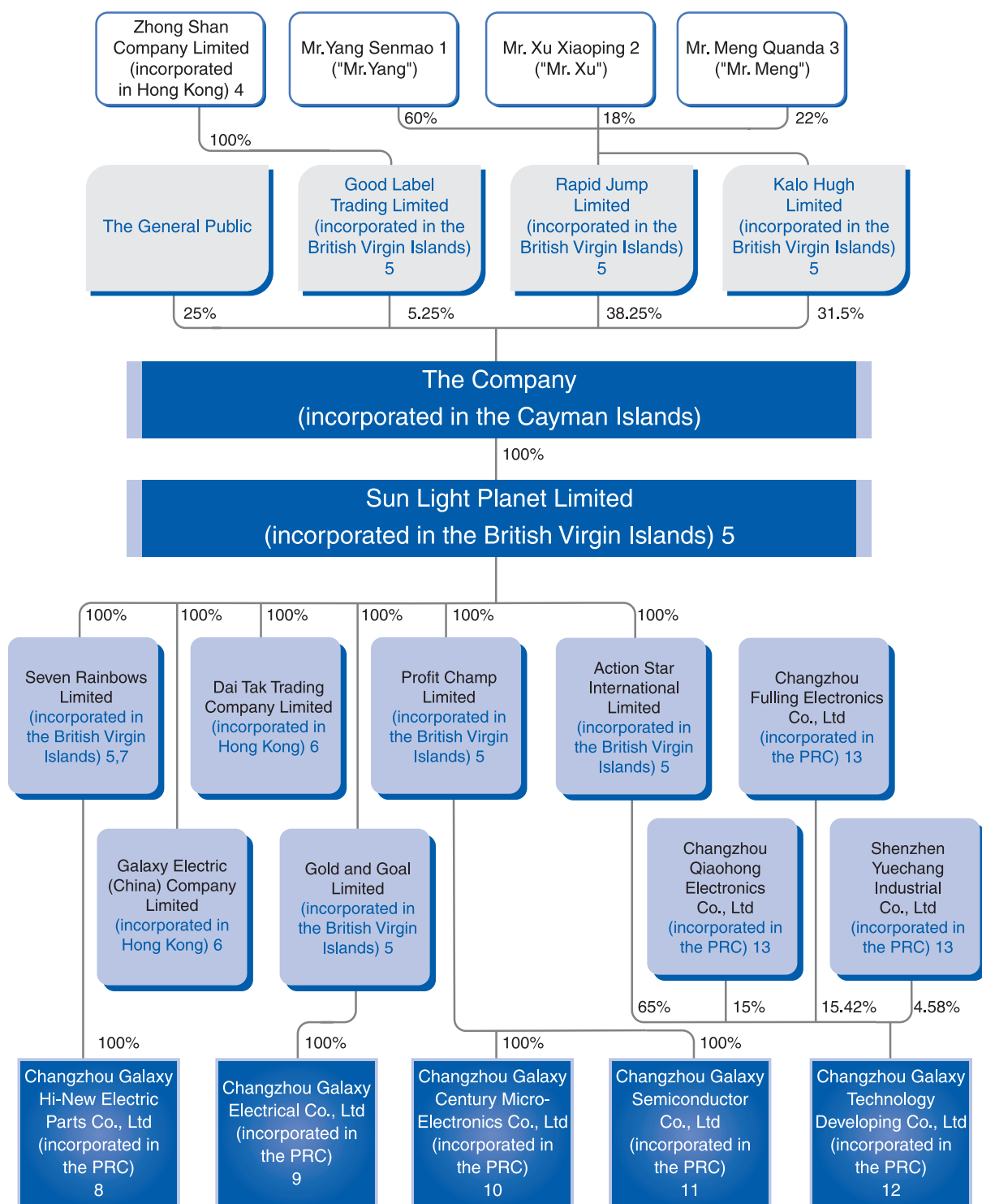


As at the date of this Report, the shareholding structure of the Group was depicted as follows:



Corporate Structure

Notes:

1. Mr. Yang is the Chairman and an executive director of the Company.
2. Mr. Xu is an executive director of the Company.
3. Mr. Meng is a non-executive director of the Company.
4. Zhong Shan Company Limited is a company beneficially wholly owned by the Jiangsu provincial government.
5. These companies are investment holding companies.
6. These companies did not have any substantial businesses as at the date of this Report.
7. Seven Rainbows Limited is a wholly owned subsidiary acquired by Sun Light Planet Limited by an acquisition agreement dated 2 November 2006. At the time of the acquisition, Seven Rainbows Limited held 100% equity interest in Galaxy Hi-New.
8. Galaxy Hi-New possesses land use rights and buildings for use by Galaxy Electrical for testing and packaging of diodes. Galaxy Hi-New also engages in the production and sales of plastic-packaged diode.
9. Galaxy Electrical is principally engaged in the design, development, production and sales of diodes.
10. Galaxy Micro-Electronics was incorporated on 8th October 2006. It did not carry on any business as at the date of this report. It will principally be engaged in the production of micro components in future.
11. Galaxy Semiconductor is principally engaged in the design, development, production and sales of 3 inch wafers mainly for use by Galaxy Electrical.
12. Galaxy Technology is principally engaged in the design, development, production and sales of 4 inch wafers. Its 4 inch wafers production line commenced production in April 2006, the products of which are mainly for use by Galaxy Electrical.
13. These companies are minority shareholders of Galaxy Technology.