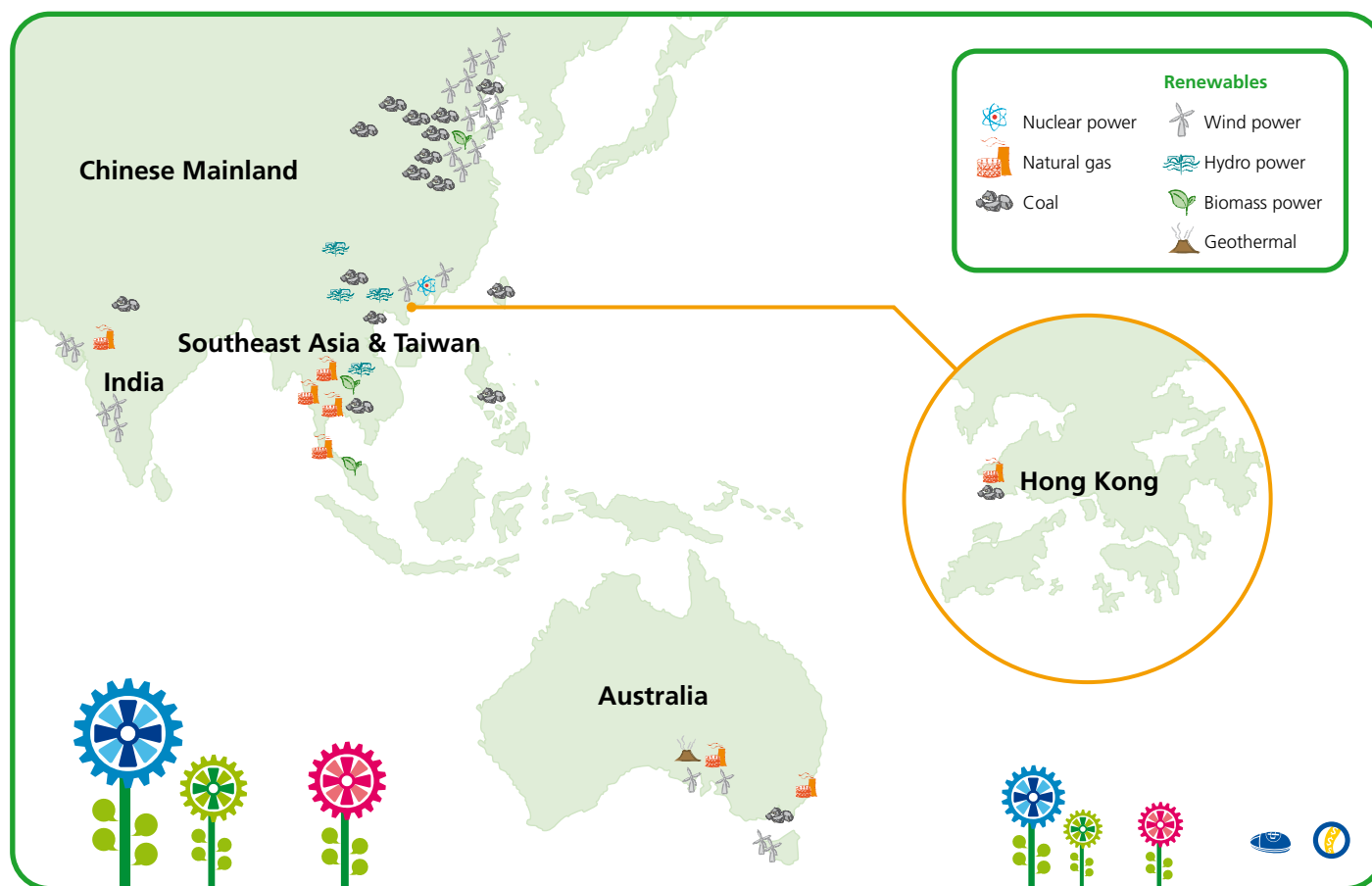


2009

SUSTAINABILITY REPORT  
– IN ESSENCE

# Business Development and Assets



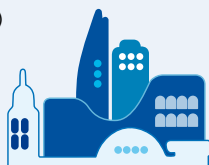
## Scope of Report

Our report covers the annual 2009 performance of operating entities in which we have operational control. The Group's strategy, performance and commitments related to climate change expand this scope to include all operating units in which CLP has an ownership interest. In line with our corporate reporting cycle, the 2009 Sustainability Reports (both the online and this printed version) cover issues up to 31 December 2009 and outlook beyond this date.

Operating entities in which CLP has operational control as of 31 December 2009 and their installed generating capacity:

### Hong Kong

- Black Point Power Station (2,500MW)
- Castle Peak Power Station (4,108MW)
- Penny's Bay Power Station (300MW)
- CLP Power Hong Kong Limited (Power Systems, and Marketing and Customer Services)



### Australia

- Yallourn Power Station (1,480MW) and Brown Coal Mine
- Hallett Power Station (180MW)
- Iona Gas Storage Facility (22 petajoule)
- Tallawarra Power Station (420MW)



### Chinese Mainland

- Fangchenggang Power Station (1,260MW)
- Huaiji Hydropower Stations (125MW)
- CLP Huanyu (Shandong) Biomass Heat and Power (Boxing Biomass) (14MW)
- Dali Yang\_er Hydropower Station (50MW)



### India

- GPEC Power Station (655MW)



### Thailand

- BLCP Power Station (1,434 MW)



# Table of Contents

|                                       |                                   |   |
|---------------------------------------|-----------------------------------|---|
|                                       | <b>Values and Strategy</b>        |   |
|                                       | Chairman and CEO's Statement      | 2 |
|                                       | Commitments Beyond Compliance     | 4 |
| <b>Outlook</b>                        |                                   |   |
| 18                                    | Outlook on a Sustainable Business |   |
|                                       |                                   |   |
| <b>Performance and Value Creation</b> |                                   |   |
| 8                                     | Economic                          |   |
| 9                                     | Environmental                     |   |
| 12                                    | Social                            |   |
| 15                                    | Key Performance Indicators        |   |
| 16                                    | Progress 2009                     |   |
|                                       |                                   |   |
| <b>Process</b>                        |                                   |   |
| 20                                    | Processes and Systems             |   |
| 22                                    | Assurance and Verification        |   |
| 23                                    | Readers' Feedback                 |   |
|                                       | <b>Relationships</b>              |   |
|                                       | Stakeholder Engagement            | 6 |

We also publish a full online Sustainability Report. You can access the full report through this link:  
[www.clpgroup.com/sustainabilityreport](http://www.clpgroup.com/sustainabilityreport)