

SNAPSHOT OF HSH IN 2015

Company at a Glance

HOTELS

Asia



THE PENINSULA HONG KONG

Established: 1928

Rooms: 300

Ownership: 100%



THE PENINSULA SHANGHAI

Established: 2009

Rooms: 235

Ownership: 50%



THE PENINSULA BEIJING

Established: 1989

Rooms: 525

Ownership: 76.6%*

USA



THE PENINSULA NEW YORK

Established: 1988

Rooms: 235

Ownership: 100%



THE PENINSULA CHICAGO

Established: 2001

Rooms: 339

Ownership: 100%



THE PENINSULA BEVERLY HILLS

Established: 1991

Rooms: 195

Ownership: 20%

* The Group owns 100% economic interest of The Peninsula Beijing with a reversionary interest to the PRC partner at the end of the co-operating joint venture period.



THE PENINSULA TOKYO

Established: 2007
Rooms: 314
Ownership: 100%



THE PENINSULA BANGKOK

Established: 1998
Rooms: 370
Ownership: 75%



THE PENINSULA MANILA

Established: 1976
Rooms: 469
Ownership: 77.4%

EUROPE



THE PENINSULA PARIS

Established: 2014
Rooms: 200
Ownership: 20%

The Hongkong and Shanghai Hotels, Limited (HSH) was incorporated in 1866 and is listed on the Hong Kong Stock Exchange (00045). HSH is the holding company of a Group which is engaged in the ownership, development, and management of prestigious hotels and commercial and residential properties in key locations in Asia, the United States and Europe, as well as the provision of tourism and leisure, club management and other services.

HSH businesses are grouped under three divisions: hotels, commercial properties and clubs and services.



GRI G4 Material Disclosure: G4-17

Company at a Glance

COMMERCIAL PROPERTIES

Residential



THE REPULSE BAY, HONG KONG

Established: 1976 & 1989
GFA: 995,546 sq. ft.
Ownership: 100%



THE LANDMARK, HO CHI MINH CITY, VIETNAM

Established: 1994
GFA: 69,750 sq. ft.
Ownership: 70%**



THE PEAK TOWER, HONG KONG

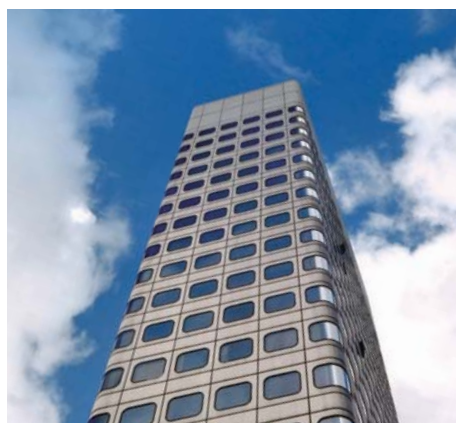
Established: 1996
GFA: 116,768 sq. ft.
Ownership: 100%

Office



THE PENINSULA OFFICE TOWER, HONG KONG

Established: 1994
GFA: 75,082 sq. ft.
Ownership: 100%



ST. JOHN'S BUILDING, HONG KONG

Established: 1983
GFA: 71,400 sq. ft.
Ownership: 100%



THE LANDMARK, HO CHI MINH CITY, VIETNAM

Established: 1994
GFA: 106,153 sq. ft.
Ownership: 70%**

** The Group owns 50% economic interest of The Landmark with a reversionary interest to the Vietnamese partner at the end of the joint venture period.



THE REPULSE BAY ARCADE,
HONG KONG

Established: 1989
GFA: 62,909 sq. ft.
Ownership: 100%



1-5 GROSVENOR PLACE, LONDON,
UNITED KINGDOM

Acquired: 2013
GFA: 246,192 sq. ft.
Ownership: 50%



21 AVENUE KLÉBER,
PARIS, FRANCE

Acquired: 2013
GFA: 43,163 sq. ft.
Ownership: 100%

CLUBS AND SERVICES



THE PEAK TRAM,
HONG KONG

Established: 1888
Ownership: 100%



THAI COUNTRY CLUB, BANGKOK,
THAILAND

Established: 1996
Ownership: 75%



QUAIL LODGE & GOLF CLUB,
CARMEL, USA

Acquired: 1997
Ownership: 100%



PENINSULA CLUBS AND
CONSULTANCY SERVICES

Established: 1977
Ownership: 100%



PENINSULA
MERCHANDISING

Established: 2003
Ownership: 100%



TAI PAN LAUNDRY,
HONG KONG

Established: 1980
Ownership: 100%