

# YEAR AT A GLANCE

## JAN - MAR



- HK Electric launches YouTube Channel to provide an additional online platform to promote public understanding of various facets of the company and to disseminate news and tips on eco-living and electric cooking.
- Three outstanding “Happy Green Community Ambassadors” shadow HK Electric environmental engineers to experience work in action at Lamma Power Station (LPS).



- Construction of underground substructure of L10, a new gas-fired unit, commences in January 2017. Installation of electrical and mechanical equipment will start in early 2018. Piling for L11, another new gas-fired unit under construction, is completed in September 2017.
- With support from HK Electric’s Lamma Trust and other donors, the redevelopment of a library cum heritage museum on Lamma Island commences.
- Health and Safety Forum promotes safe behaviours among employees and contractors. Participants share knowledge and experience on construction safety.



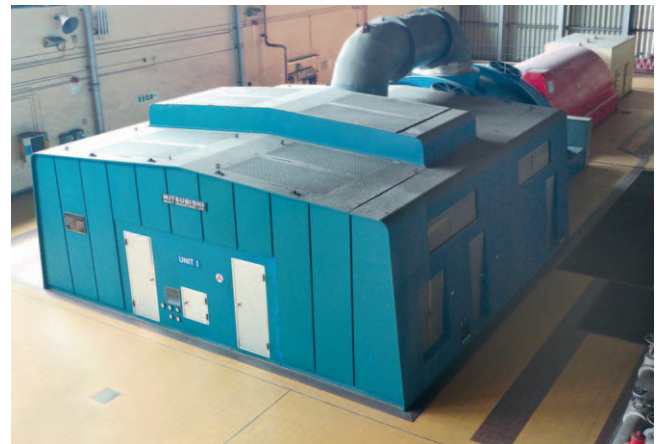
- With two submissions, HK Electric comes first and third in the Open Group of the “International Competition on Second Life for Retired Batteries from EVs” organised by the Environment Bureau.

- Completion of Phase 3 132-kV gas insulation switchgear improvement project at North Point Switching Station including the diversion of four 132-kV cable circuits to the new Gas Insulated Switchgear Busbar No.2.
- HK Electric enters into a new Scheme of Control Agreement (SCA) with the Government, effective for 15 years from 1 January 2019. The new SCA provides the long-term certainty for the local electricity sector to support the Government’s energy and environmental policy objectives.



## APR - JUN

- L1, the oldest coal-fired generating units at LPS, retires in May 2017, kicking off a programme to decommission coal-fired generation units. Other coal-fired units are expected to retire towards the end of the next decade or so.



- 12 retirees are named “Outstanding Third Age Citizens” by HK Electric and the Hong Kong Council of Social Service for their dedication to lifelong learning, leading a healthy lifestyle and serving the community.



## JUL - SEP

- Wins the Grand Award of the 2017 HKMA Quality Award in recognition of HK Electric's commitment to Total Quality Management and ability to set and achieve high operational and safety standards.
- To celebrate the 20th anniversary of the establishment of the HKSAR, HK Electric launches a promotion campaign to encourage customers to switch to e-bill and autopay.



- Two new data centres with reliable, automated, secure and green computer and auxiliary facilities are commissioned to replace four outdated data centres.

- Announcing a small tariff rebound of 1.9% for 2018, HK Electric honours its pledge to keep tariffs between 2014-18 below the 2013 level.
- Joins hands with AlipayHK to introduce e-wallet – a new way for customers to settle electricity charges and view bill balance through the mobile payment app.
- The Environmental Impact Assessment for constructing an offshore liquefied natural gas terminal in Hong Kong waters enters its final stage. The report is expected to be submitted to the Government for approval in early 2018.



- CAREnJOY programme offers electrical safety talks and gatherings in addition to regular home visits, combined to reach out to about 2,000 single elders during the year.

- Signs a Memorandum of Understanding with The Hong Kong Polytechnic University, Xi'an Jiaotong University and the State Grid Corporation of China to nurture talents in the power and energy field along the Belt and Road region.



## OCT - DEC



- A new eco-heritage route in Wan Chai is introduced under Green Hong Kong Green, in which participants are guided through many eco-heritage spots, including the original site of the first power station in Hong Kong.



- For the second year in a row, HK Electric serves as the official energy partner of Formula E Hong Kong ePrix to provide the event with safe, reliable and clean electricity, as well as power-related technical advice.

